



Effects of the Pandemic on the National Survey of Occupation and Employment (ENOE)

March 2022

Measures to ensure the generation of labour statistics

BEGINNING OF THE PANDEMIC

March 11

**WHO declares
COVID-19
pandemic**

March 23

**School closures and
mobility restriction of
vulnerable people**

March 31

**INEGI announces
the suspension of
its face to face
data collection of
surveys and
Censuses**

March 18
**First death
by COVID-19
in Mexico**

**INEGI employees start
working from home
(Home Office) and
measures of mobility
restriction of vulnerable
employees are
established, except
censuses and surveys**

March 30
**Mexico
declares
health
emergency**

FIRST STAGE: ETOE

March 12

ILO-ECLAC

Invites analysis of the impact of the pandemic on statistical operations

March 16

INEGI begins work for the design of telephone surveys

April 1

INEGI promotes scenarios for the telephone collection of information during the pandemic

April 17

ILO-Latin American forms the "**ECOVID Employment**" Group with the active participation of INEGI

March 13

Latin American countries begin impact assessment in statistical operations

March 24

ILO and ECLAC, INEGI and other countries analyze strategies for the continuity of statistical operations

April 7

INEGI-World Bank analyze strategies to generate information through telephone interviews

April

INEGI begins the data collection of the Telephone Survey of Occupation and Employment (ETOE)



International organizations share experiences to maintain the continuity of statistical operations and the start of the ETOE.

SECOND STAGE: ENOEN

First stage: May 18

Full opening in municipalities without contagion and neighboring municipalities without contagion

Third stage: New Normality, June 1, Reopening of activities based on the weekly epidemiological risk traffic light by regions (state or municipal)

July 17

The official journal of the federation publishes the agreement by which all **censuses and surveys to be restart out in the national territory**

July

The survey of the ENOE New Edition (ENOEN) begins to gradually return to the survey of the ENOE

Second stage: preparation of reopening from May 18 to 31: Expansion of companies considered essential and publication of guidelines for the early reactivation of activities

June 15

Reopening of activities in 16 entities at orange epidemiological risk traffic light and application of Technical Guidelines for Health Safety in the Work Environment for the reactivation of face to face data collection activities

April, May and June

The ETOE is carried out in a national sample of dwellings and in **July it is suspended** to start the **ENOEN** before the resumption of Censuses and Surveys

THIRD STAGE: STRENGTHENING OF THE ENOE New Edition



July 2020

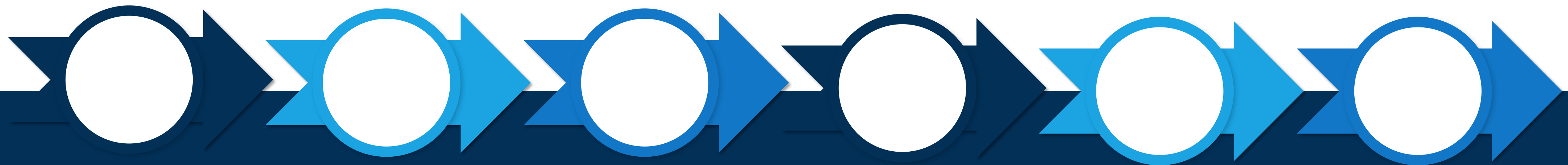
INEGI concluded the dissemination of the ETOE and started the **ENOE New Edition (ENOE^N)**

Fourth quarter of 2020

It initiated a process of **public consultation and testing** on changes to the ENOE to deal with contingencies and ensure continuity in the generation of information

Fourth quarter of 2020

INEGI began the cycle of **tests on the impact of changes** in occupation and employment statistics



The strategy of conducting face to face and telephone interviews of the **ENOE New Edition (ENOE^N)**, will be maintained as long as the sanitary measures to contain the COVID-19 pandemic continue

The 2020 Public Consultation submitted for consideration:

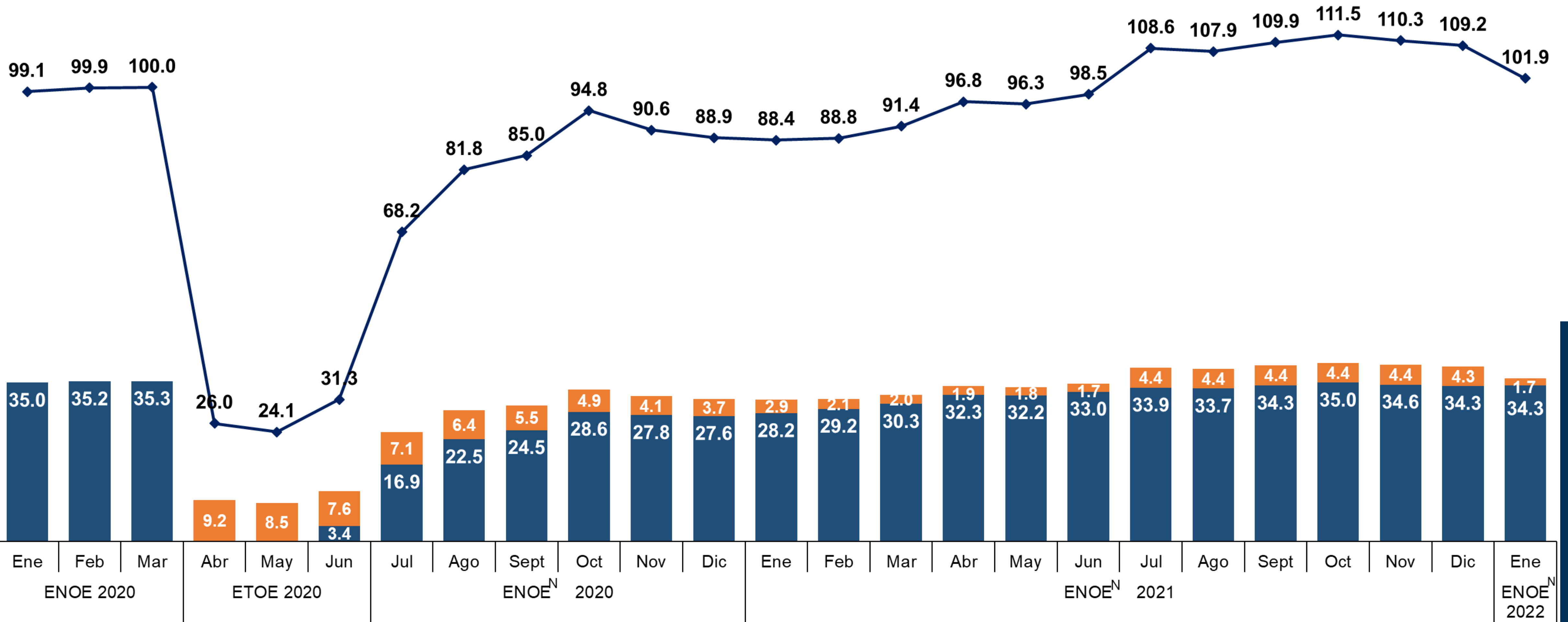
- Migration to electronic devices
- Updating catalogs and classifiers
- Independent telephone survey

During 2021, the survey strategy was maintained through telephone interviews in an independent sample and face to face interviews in the traditional ENOE sample

Evolution of the telephone and face to face response rate

Thousands of effective face to face and telephone dwellings total monthly and effective interview coverage, 2020 to 2022

Effective face to face dwellings Telephone effective dwellings Effective Interview Coverage

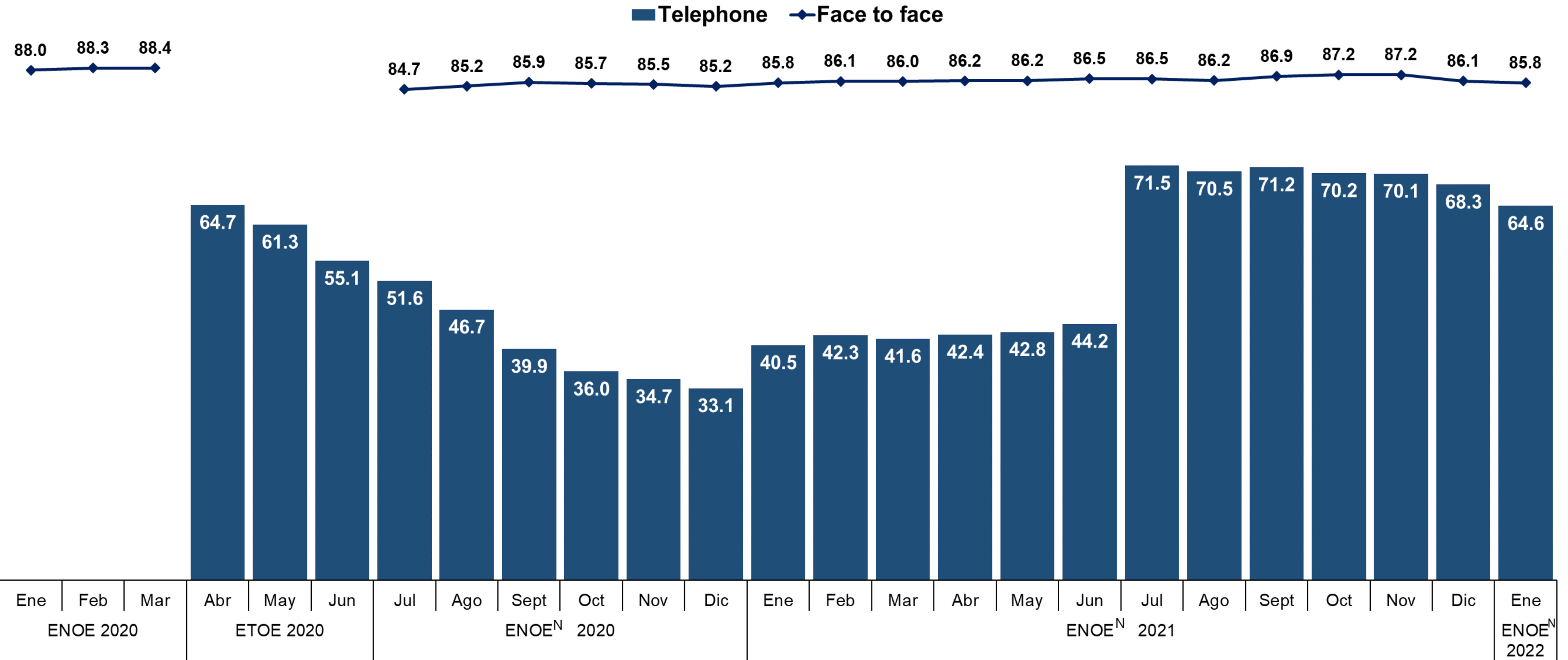


Note: The expected coverage is based on what was observed in March 2020.



Monthly response rate of telephone and face to face interviews, 2020 to 2022

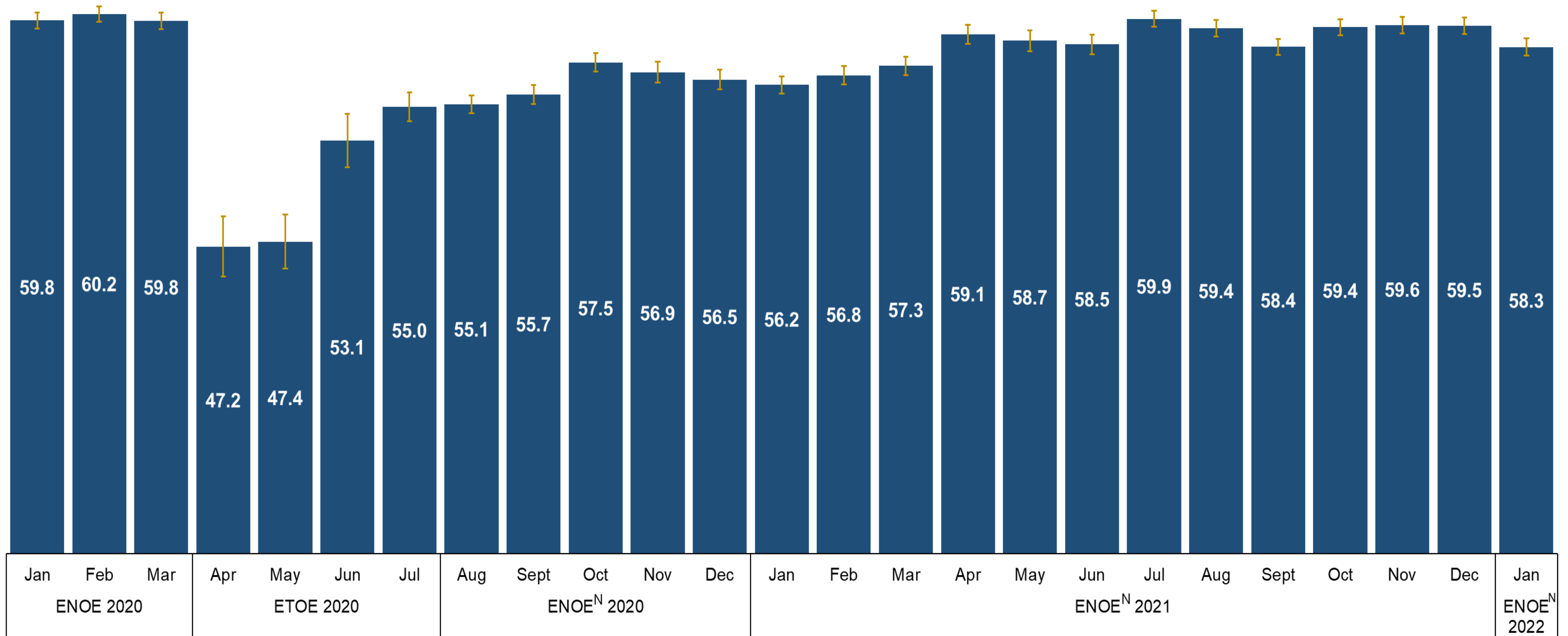
(Percentage)



Monthly indicators

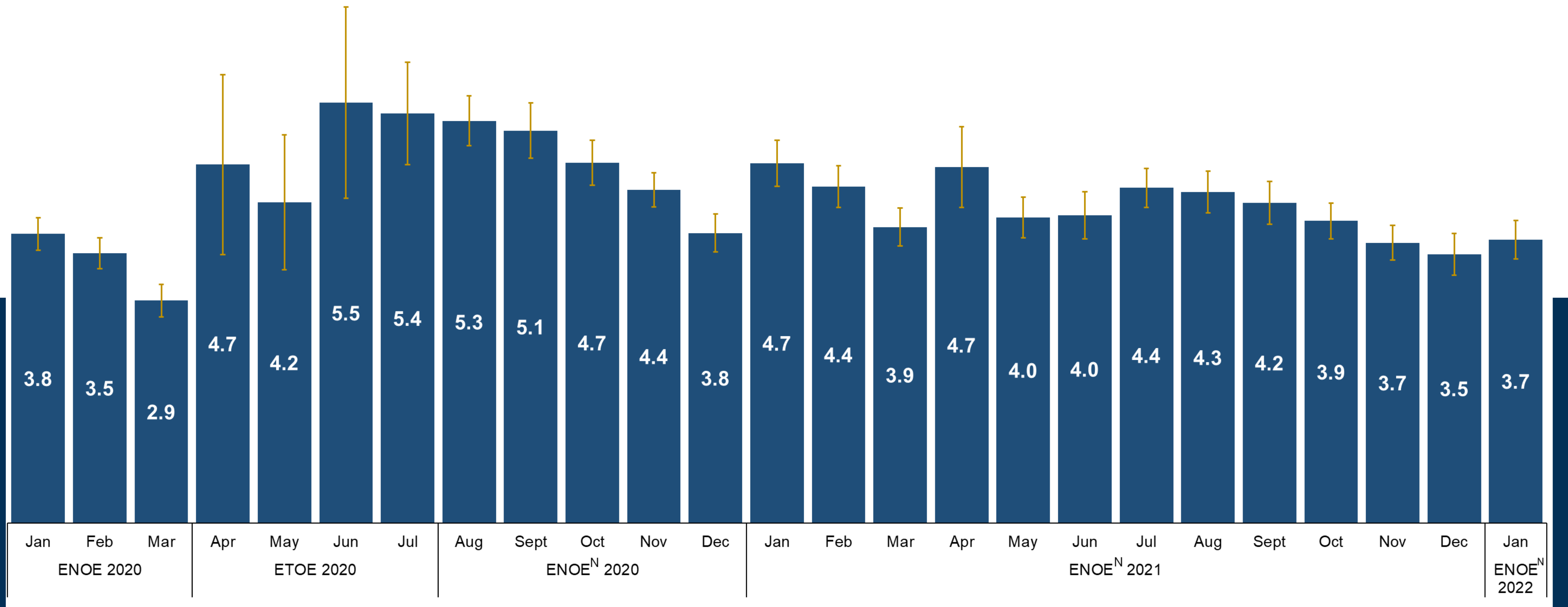
Labor force participation rate, 2020 to 2022

(Percentage)



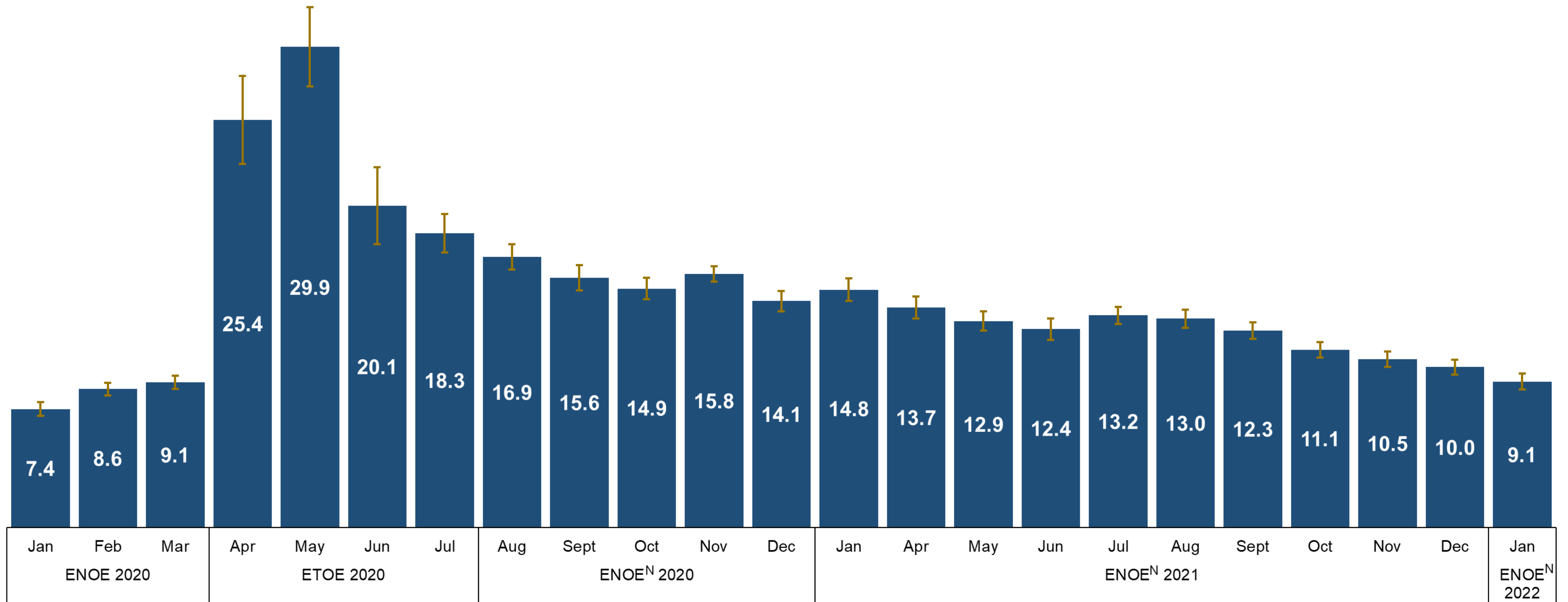
Open unemployment rate, 2020 to 2022

(Percentage)



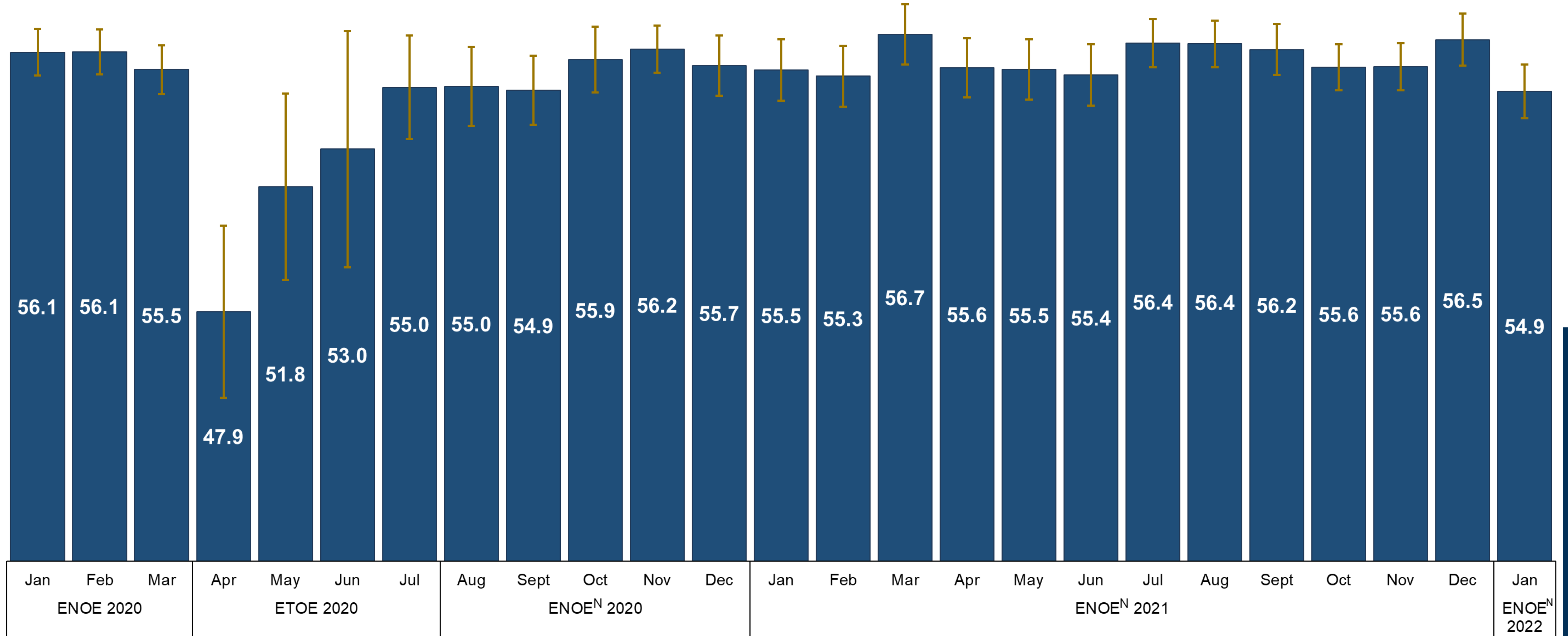
Underemployment rate, 2020 to 2022

(Percentage)



Labor informality rate, 2020 to 2022

(Percentage)



Conociendo México

800 111 46 34

www.inegi.org.mx

atencion.usuarios@inegi.org.mx



INEGI Informa