

# **Presentation to Symposium on Mainstreaming Gender in Water Resources Management for Disaster Risk Reduction in the Caribbean**

**Peter Clarke J.P., P.E.  
Managing Director  
Water Resources Authority  
Jamaica**

# Agenda

- About the WRA & IWWRM
- Get the Policies right
- The Water Policy Status
- Step up with Operations
- So, who suffers?

# Agenda

- About the WRA & IWORM

# **Water Resources Authority (WRA-Act)**

**WRA -created on April 7, 1996 by the  
promulgation of the  
Water Resources ACT 1995**

# Background to the Act

- 1 Trends in
  - increasing water demand
  - pollution
  - threats from floods and droughts
- 2 Need for cohesive policy framework to guide planning and rational development
- 3 Need for unified approach to management

## Mandate of WRA Act

**To regulate, allocate, conserve, and otherwise manage the water resources of Jamaica.**

# Fundamental Water Resource Challenges



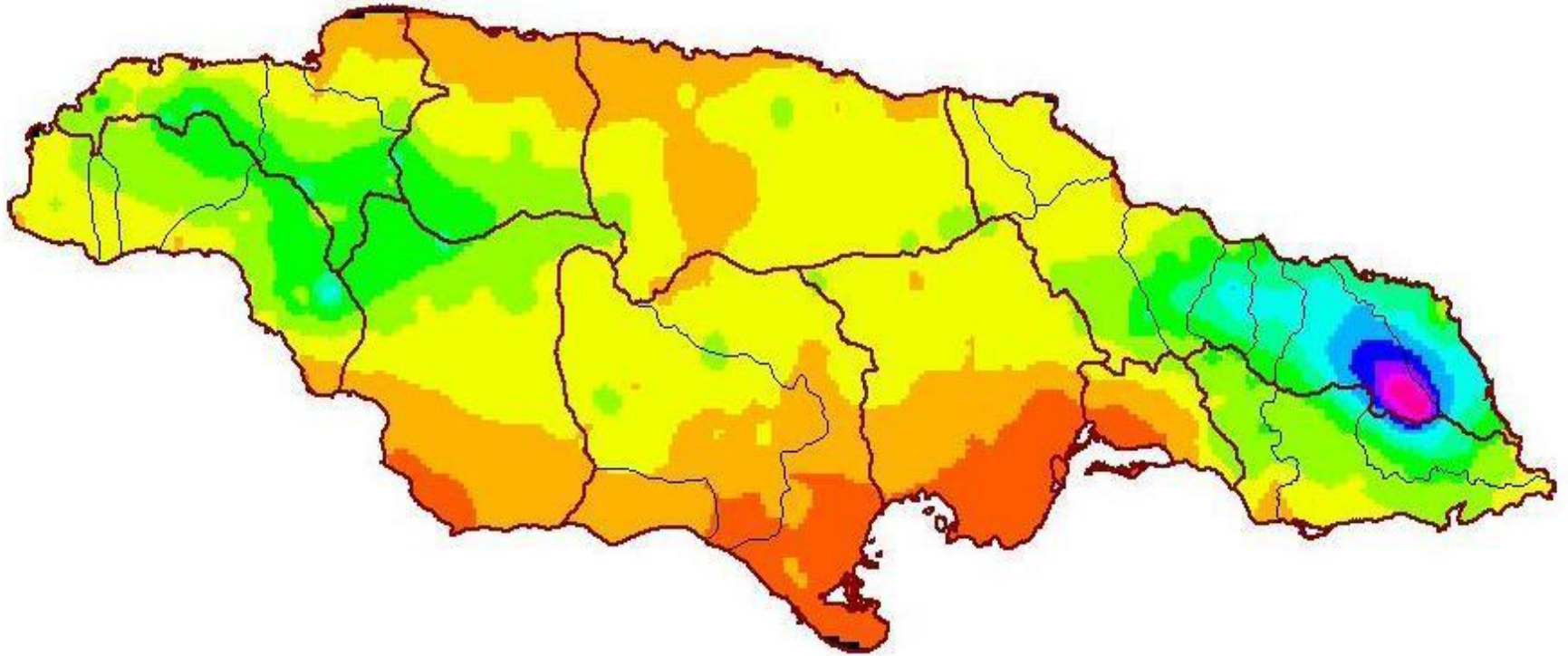
- Supply/demand challenges
- Flooding and erosion
- Water quality issues
- Climate variability
- Climate change

# WRA's Role

- Hazard Mitigation & Disaster Preparedness (ODPEM)
  - Technical expertise
- Facilities Siting (NRCA/ NEPA; MOH)
  - Landfills, Cemeteries, STP's
  - Any other industry that may impact Water Quality



# Climate



**HOTTER**  
**WETTER**  
**DRIER**

# Agenda

- Get the Policies right
  - Women are still discriminated against!! .... So we need specific policies

# Climate Change Policy

- Policies and Plans use a participatory inclusive approach for women and girls.
- → Gender sensitive policies
- Agents of Change
- Climate Change Division
  - 7/11 Women
  - National Focal Points on Climate Change – 51%

# Disaster Risk Reduction

## ■ Policy

- Women included in all phases of the Planning & Implementation of C.C. & D.R.R. policies, plans and programmes
- Recognize the need for safety / well being of women

## ■ Agents of Change - ODPEM

- Mitigation, Planning & Research Unit (F) – 2/3
- Preparedness & Emergency Ops. (M) - 3/5
- Logistics (M) – 1/4
- Telecoms (F) – 2/4

# MET Service Ja.

- Professional Team – 50%
- Technical Team ( incl. Airport duties) – 20%

# Water Policy

- Water Sector Policy (2019)
  - Embedded → Gender sensitivity and Response
  - Rural Water Supply
    - ~~Urban vs Rural~~
    - Utility vs Non Utility Service Areas
  - Rain Water Harvesting

# Water Resources

- Directors (M) – 2/4
- Administration (F) – 13/21
- Senior Technical (M) – 7/18
- Junior Technical (M) – 0/10

# IWRM

- IWRM Council – (F) – 60%
  - Drought Management / Response
  - Flood Planning / Management
  - Water Balance Management
  - Water/ Energy nexus
    - 2 pronged approach
      - Energy costs for producing / delivering water
      - Potential Energy derived from water production vs. water supply from energy production



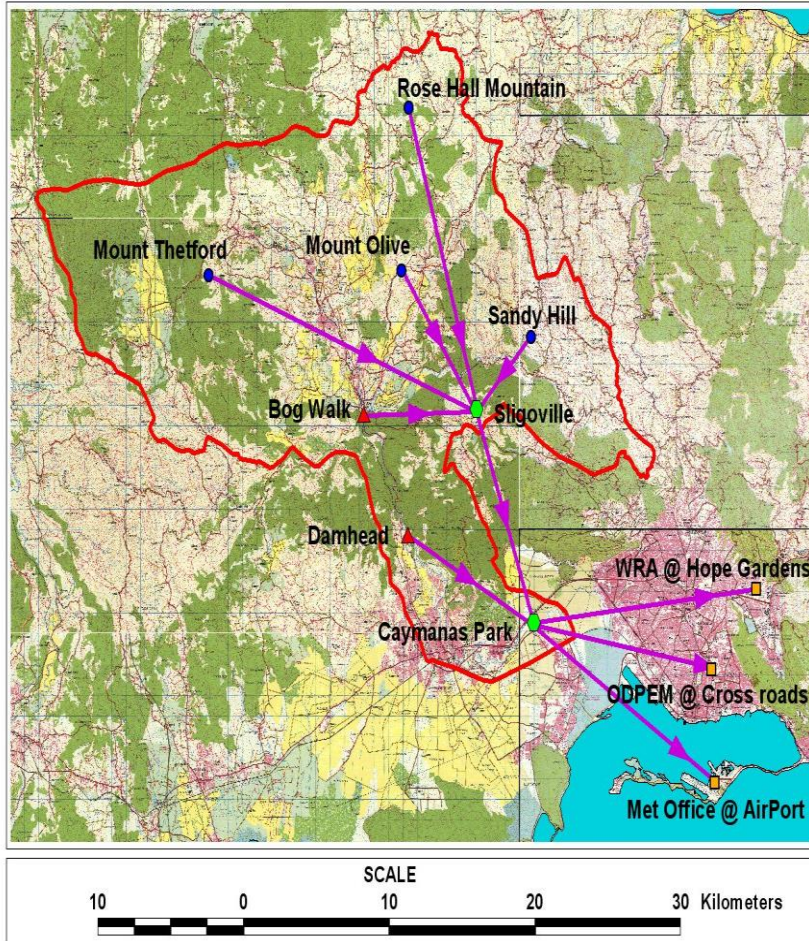
# Agenda

- Step up with Operations

# General Operations

- PPCR – WB funded project for beneficiary 3 countries
  - Met Service JA – New RADAR
  - WRA – Flood Early Warning System for a critical roadway
  - Fisheries – Resource Resilience – 48% Female Owned
  - Safetynin Schools → Safety of Schools
    - Schools are Disaster Shelters.

## Rio Cobre Flood Warning System Telemetry Network



# Water Operations

- Rural Water Supply Ltd
  - RWH → community Catchment Tank Rehab.
  - Alternative supply modality for small, discrete communities
- Water Voucher (~~Ministry of Water & Housing~~)
- Water Shop ( Ministry of Local Govt & Community Development)
  - Water is delivered to the shop → cash purchase

# Agenda

- So, who suffers?

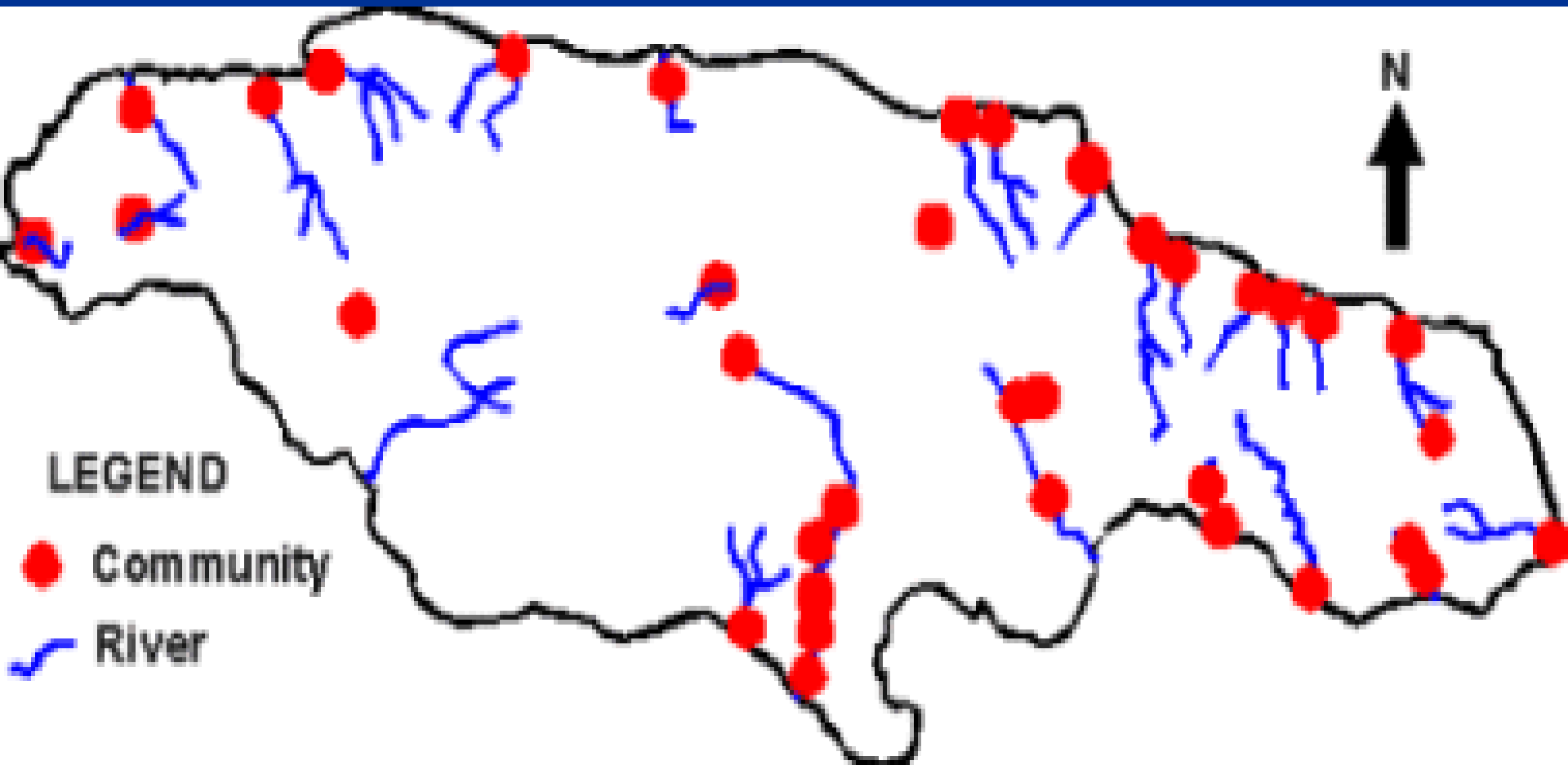
# Water related fatalities

- Children are especially vulnerable
- Constructing with greater wind resilience
- Flood resilience not generally improved



**FLOOD PRONE COMMUNITIES IN JAMAICA ARE LOCATED ON ALLUVIAL FANS AT THE MOUTHS OF RIVERS. *EXAMPLES:* Harbour View, Kingston, Ocho Rios, Yallahs fan.**

**FLOODING IN JAMAICA IS GENERALLY A CASE OF ALLUVIAL FAN FLOODING.**



# DEBRIS FLOODING, BULL BAY, JAMAICA, Tropical storm Lili.





# MONTEGO BAY NOV 2017







# Groundwater induced depression flooding

Groundwater level rises  
above ground level filling  
depressions

Moneague



# Post - Hurricane

- WASH goes “down the drain”
- Increased enteric issues ; children ^
- Women are tasked ( or task themselves) with monitoring of children in the hospital.... It is not uncommon for women to “ run the Ward”
- Policies and Plans use a participatory inclusive approach for women and girls.
- → Gender sensitive policies
- Agents of Change

# Droughts

- Creeping disaster
  - Increased challenges
    - Higher costs for water
    - Greater distance travelled for supply



# Integrated Water Resources Management

*IWRM is a means of achieving three key strategic objectives:*

## *Efficiency,*

given scarcity of resources

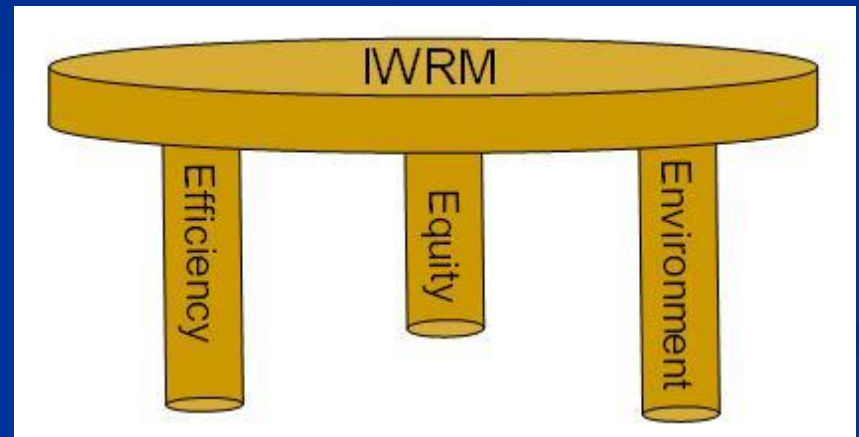
- important to maximise the economic and social benefits

## **Equity** in the allocation

- reduce conflict
- promote sustainable development.

## *Environmental sustainability*

- water resources base and ecosystems are not infinitely robust
- should not be put at risk



# THE END

