



UN Big Data Regional Hub
in Brazil

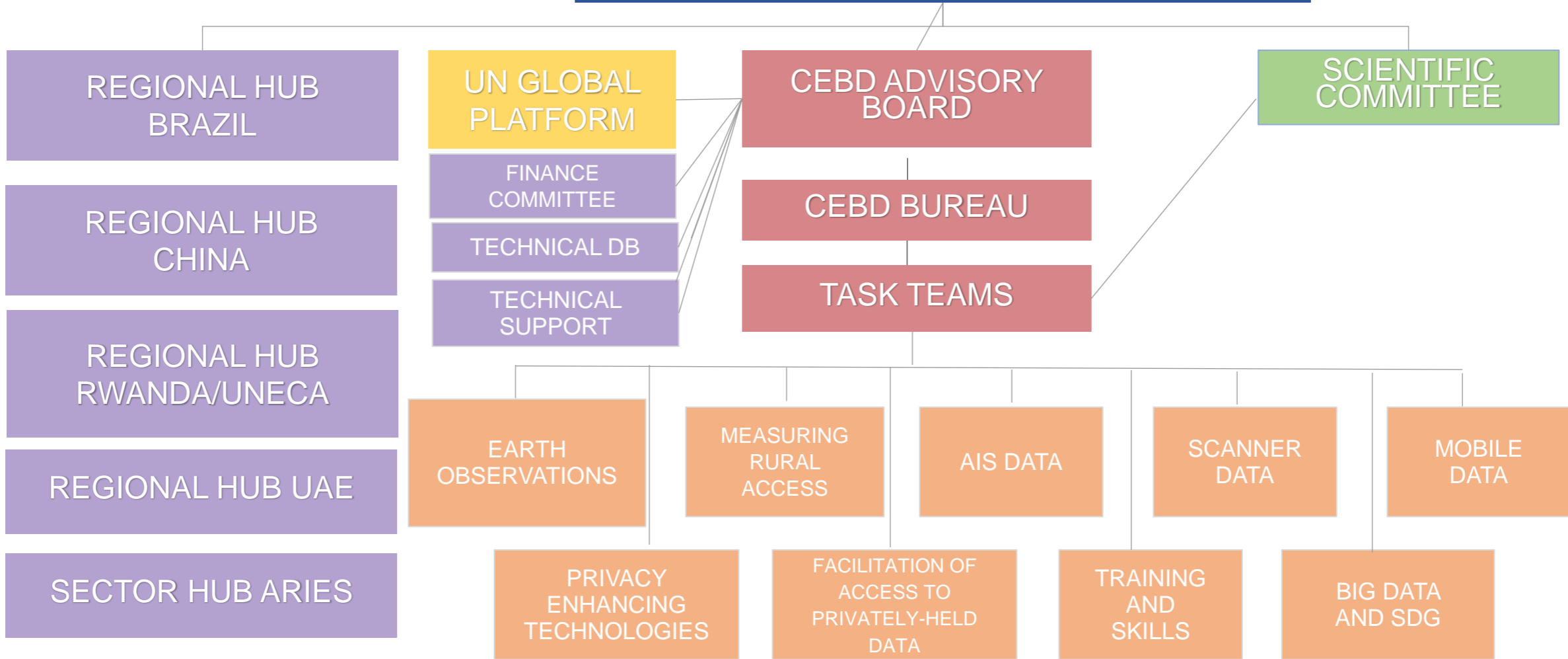
54 STATCOM
Reunión informativa CEA

27 February 2023

Outline

- UN Committee of Experts on Big Data and Data Science for Official Statistics (UNCEBD)
- The logo for UN Big Data Regional Hub in Brazil, identical to the one in the top right corner.
 - People
 - Workstreams
 - Activities
 - Partners

UN COMMITTEE OF EXPERTS ON BIG DATA AND DATA SCIENCE FOR OFFICIAL STATISTICS



Regional Hubs for Big Data



Regional Hub in Brazil: people

Technical Group

Andrea Diniz da Silva (ENCE/IBGE) **coordinator**

Augusto Fadel (IBGE)

Bianca Walsh (ENCE/IBGE)

Hemilio Fernandes Campos Coelho (UFPB)

Marcelo Pitta (Cetic.br/Nic.br)

Maria do Carmo Dias Bueno (IBGE)

Patricia Zamprogno Tavares (IBGE)

Rafael March Castaneda Filho (IBGE)

Advisory Group

Andrea Diniz da Silva (ENCE/IBGE) **chair**

Ronald Jansen (UNSD) **co-chair**

Alexandre Barbosa (Nic.br)

Cristiano Ferraz (UFPE)

José Antonio Mejia-Guerra (IDB)

Leonardo Trijullo (DANE)

Rolando Ocampo (ECLAC)

Solange Correa Onel (ONS)

Workstreams

Strengthening ties and promoting cooperation between producers of official statistics in the Region

Supporting sharing of experiences and knowledge, promoting increased contact and integration between regional producers and users, and increasing use of the knowledge generated.

Training and fostering the interest of young statisticians on the use of Big Data in Official Statistics

Offering online courses and webinars, with theoretical content and hands on activities, on methods, techniques, and tools for the use of Big Data in Official Statistics.

Supporting research on the use of Big Data and Data Science

Broadening the thematic scope of research on the use of Big Data in Official Statistics to gain experience in handling and processing this type of data; improving the accuracy and robustness of the results; developing protocols for incorporation of new data sources into the portfolio of Statistics Institutes in the Region.

Organizing and hosting seminars and conferences

Facilitate the exchange of information and contribute to the discussion on the use of new data sources and technologies, increasing involvement of Latin American and the Caribbean NSIs in developing new data sources, methods, and algorithms for the global statistical system.

Some of the activities

- 2 Workshops on web scraping for CPI: tools and methods
- Conference: Using BD and ML for land cover and land use mapping
- 2 STW: Training Tools developed by the TT on Training and Big Data for Official Statistics
- Webinar series: use of MPD (6)
 - Opportunities and Challenges, Oct
 - Migration, Dec
 - Tourism, Feb
 - Population, Mar

Some of the activities

- Satellite UN Hackathon 2022
- Data Science Accelerator Programme of the Data Science Campus of ONS
- Researches: use of satellite imagery for SDG indicator 11.6.1 and webscraping for e-commerce
- Annual consultation on the use of big data for official statistics in LAC

Upcoming: Webinars: MPD for Information Society; MPD: vision of future; launching the awareness courses of MPD, Scanner Data and AIS, general awareness for big data (when available). Workshops: use of satellite imagery for SDG indicator 11.7.1.

Partnerships



Instituto
NACIONAL de
ESTADÍSTICA

DANE
INFORMACIÓN PARA TODOS



 Office for
National Statistics



Computational
Agricultural
Statistics
Laboratory

cetic.br nic.br cgi.br



UNITED NATIONS



IDB Banco Interamericano
de Desarrollo





UNBigData Regional Hub
in Brazil



Thank you

Visit us

<https://hub.ibge.gov.br>