

The UCL Research Data Repository (RDR)

Dr Paul Ayris

Pro-Vice-Provost

UCL (University College London)

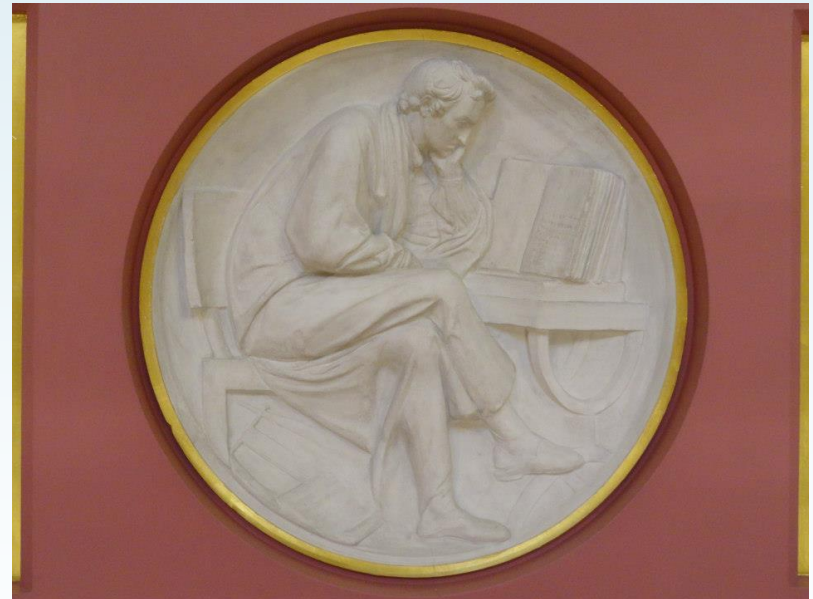
E-mail: p.ayris@ucl.ac.uk

Twitter: @ucylpay



Content

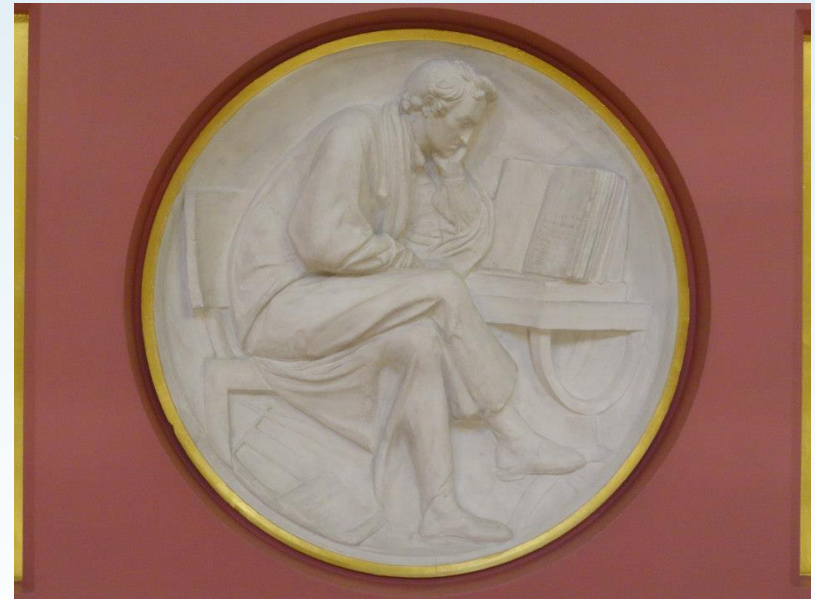
- ☐ European contexts
- ☐ Research Data - LEARN
- ☐ Drivers for RDR
- ☐ RDR
 - ☐ Establishing the repository
 - ☐ Architecture
 - ☐ Metadata
 - ☐ Criteria for selection and preservation
 - ☐ Stakeholders
 - ☐ Licensing
 - ☐ Costs
- ☐ Incentives
- ☐ Conclusion



Plaster Relief by John Flaxman,
Flaxman Gallery, UCL

Content

- ☐ European contexts
- ☐ Research Data - LEARN
- ☐ Drivers for RDR
- ☐ RDR
 - ☐ Establishing the repository
 - ☐ Architecture
 - ☐ Metadata
 - ☐ Criteria for selection and preservation
 - ☐ Stakeholders
 - ☐ Licensing
 - ☐ Costs
- ☐ Incentives
- ☐ Conclusion



Plaster Relief by John Flaxman,
Flaxman Gallery, UCL

European Commission: Open Science Policy Platform – 8 pillars of Open Science

Future of Scholarly Communication

EOSC (European Open Science Cloud)

FAIR Data

Skills

Research Integrity

Rewards

Altmetrics

Citizen Science

League of European Research Universities

23 leading universities pushing the frontiers of innovative research

- ❑ LERU has produced an Open Science Roadmap for universities
- ❑ Launched on 12 June 2018 at <https://www.leru.org/publications/open-science-and-its-role-in-universities-a-roadmap-for-cultural-change>
- ❑ 41 Recommendations



LERU Leadership Statement

❑ LERU wants to underline the importance of the culture shift which is needed for the implementation of Open Science in universities, in particular with regard to Open Access publications. Plan S poses significant challenges for universities, not least in terms of managing costs

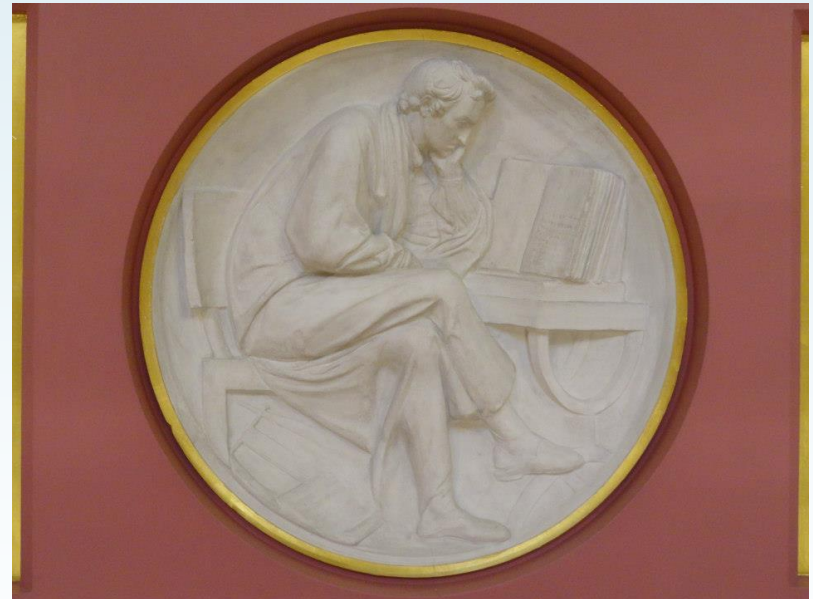
❑ Without a successful conclusion to the debate, a successful transition to Open Science will not be possible

<https://www.leru.org/news/leadership-the-key-to-open-science-success>



Content

- ☐ European contexts
- ☒ Research Data - LEARN
- ☐ Drivers for RDR
- ☐ RDR
 - ☐ Establishing the repository
 - ☐ Architecture
 - ☐ Metadata
 - ☐ Criteria for selection and preservation
 - ☐ Stakeholders
 - ☐ Licensing
 - ☐ Costs
- ☐ Incentives
- ☐ Conclusion



Plaster Relief by John Flaxman,
Flaxman Gallery, UCL

LEARN Deliverables

- ❑ Model Research Data Management Policy
 - ❑ Fed by a study of RDM policies and input from Workshop attendees
- ❑ Toolkit to support implementation
 - ❑ Issues identified in Workshops and in literature
 - ❑ Surveys and self assessment tools
- ❑ Executive Briefing (in six languages)

<http://learn-rdm.eu/en/about/>



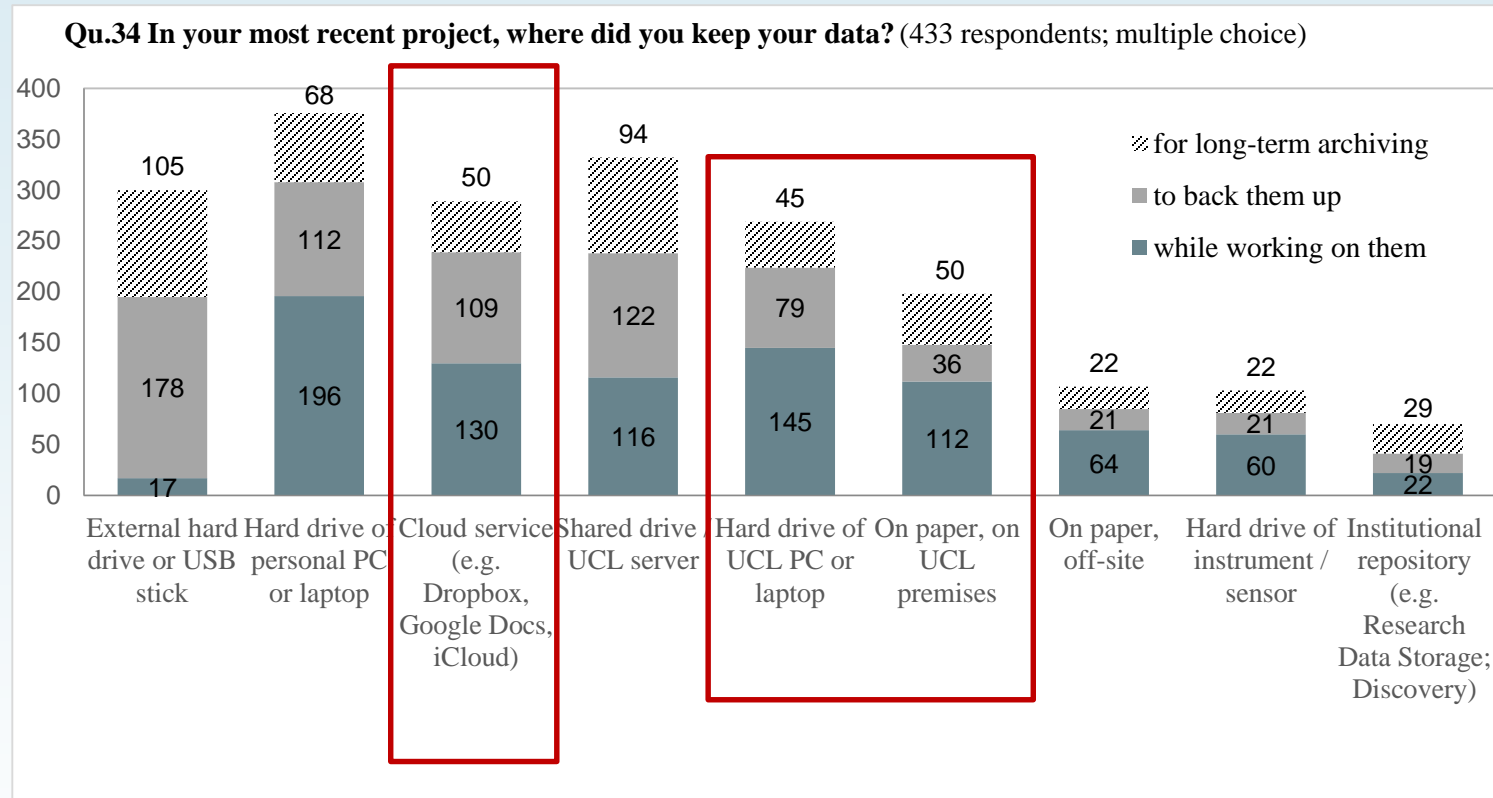
Wilkins Building, UCL, 1826



UCL survey by Research Data Advocacy Officer

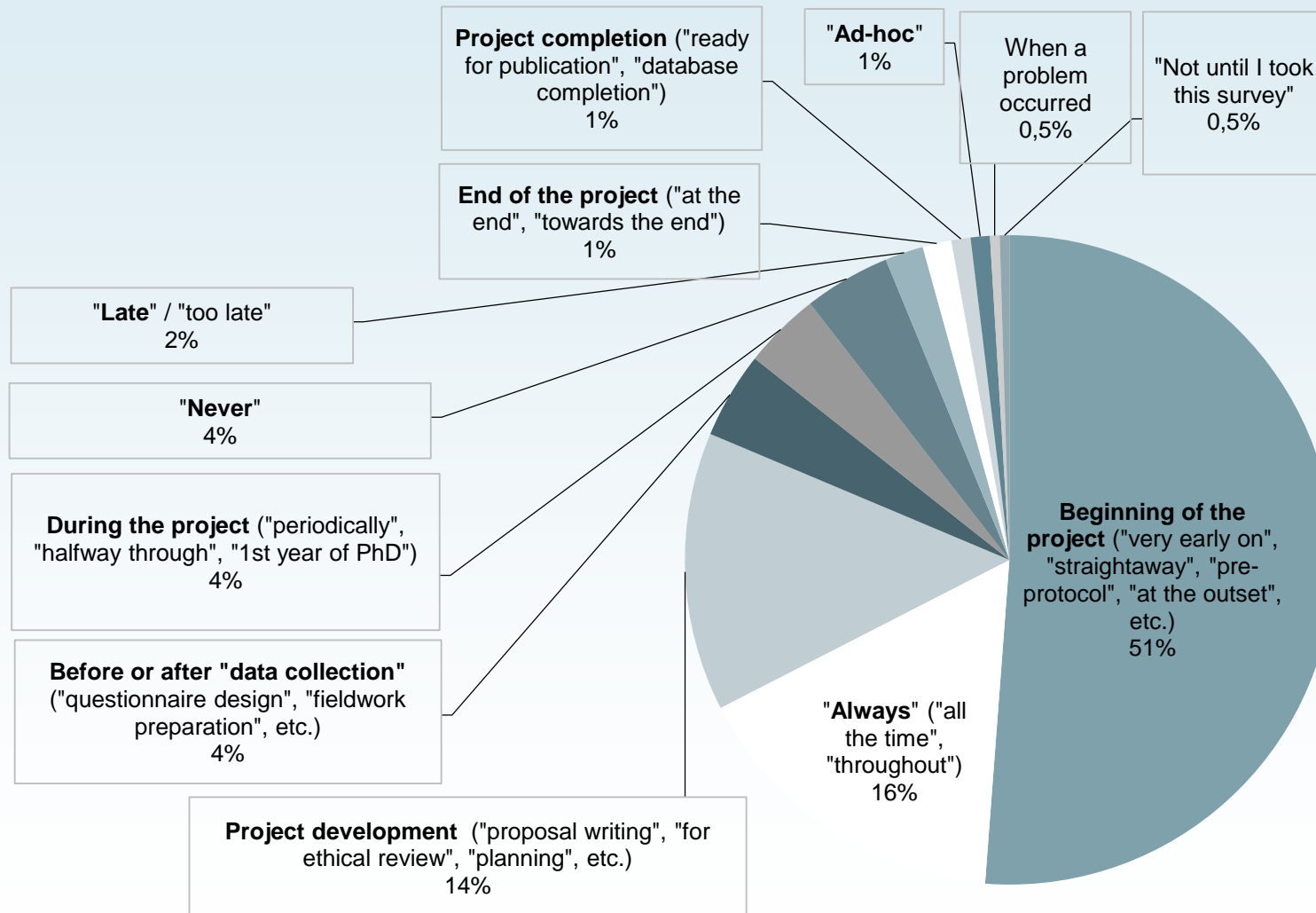


- ☐ 130 research departments, institutes, centres and units represented in survey
- ☐ Response rate – 306 completed surveys out of 619
- ☐ Respondents
 - ☐ 18% early career researchers
 - ☐ 39% experienced researchers
 - ☐ 30% research students



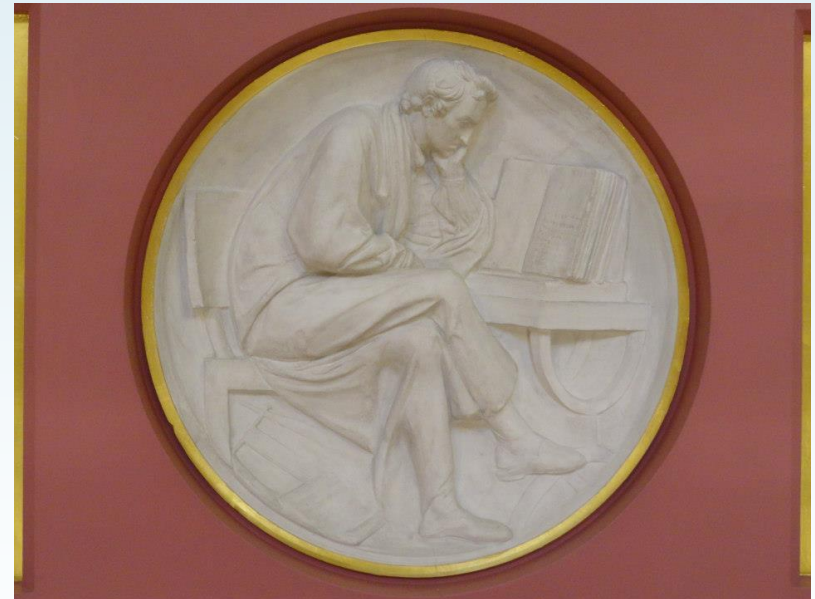
- ❑ 45% of respondents used a personal computer for storage
- ❑ Choices included Cloud services; others used paper...
- ❑ Central UCL facility used by only 5%

Qu.61 At what stage of the project did you think about data management? (217 respondents; free text)



Content

- ☐ European contexts
- ☐ Research Data - LEARN
- ☒ Drivers for RDR
- ☐ RDR
 - ☐ Establishing the repository
 - ☐ Architecture
 - ☐ Metadata
 - ☐ Criteria for selection and preservation
 - ☐ Stakeholders
 - ☐ Licensing
 - ☐ Costs
- ☐ Incentives
- ☐ Conclusion



Plaster Relief by John Flaxman,
Flaxman Gallery, UCL

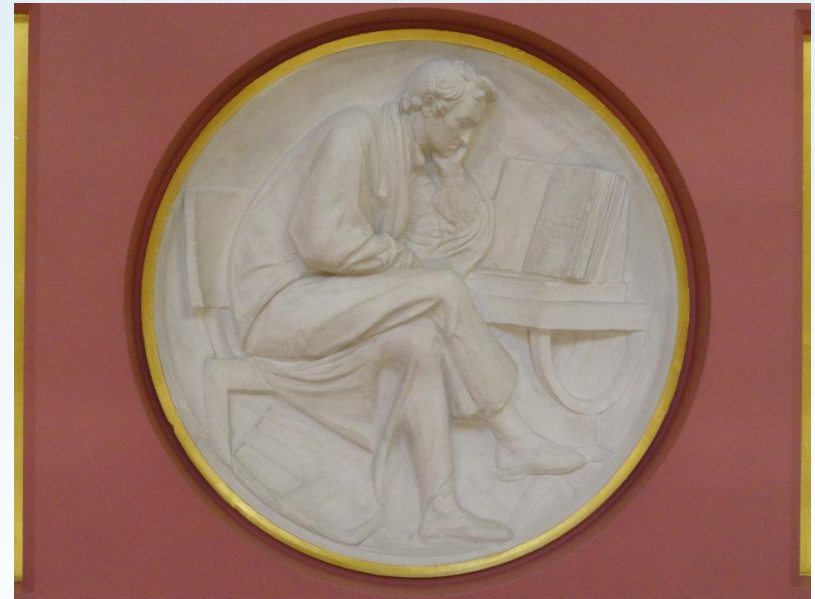
Drivers for RDR

- ❑ Research Data Storage capacity already in place
- ❑ Separate repository existed for High Performance Computing outputs
- ❑ Repository needed for archiving of non-sensitive/non-personal research data
- ❑ Research funders beginning to requirements for research data curation, but not mandates – yet...



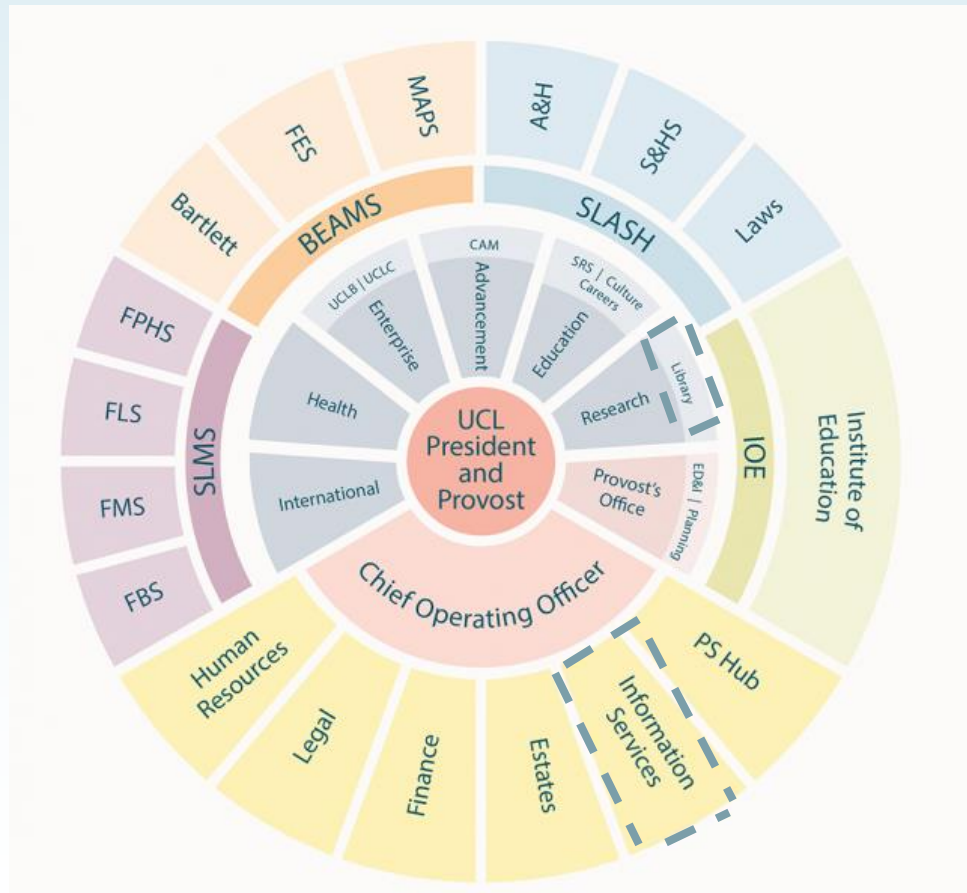
Content

- ☐ European contexts
- ☐ Research Data - LEARN
- ☐ Drivers for RDR
- ☐ RDR
 - ☐ Establishing the repository
 - ☐ Architecture
 - ☐ Metadata
 - ☐ Criteria for selection and preservation
 - ☐ Stakeholders
 - ☐ Licensing
 - ☐ Costs
- ☐ Incentives
- ☐ Conclusion



Plaster Relief by John Flaxman,
Flaxman Gallery, UCL

RDR – a collaboration between ISD and Library



Key to departments

Professional Services

Human Resources
Legal Services
Finance and Business Affairs
Information Services Division
Estates
Professional Services Hub

Offices of the Vice-Provosts (OVP)

Advancement
Enterprise | Innovation & Enterprise
Health
Education and Student Affairs
International | Global Engagement
Research

Departments within OVPs

Communications and Marketing
Student and Registry Services
Culture
Careers
Library Services

Departments within the Provost's Office

Equality Diversity and Inclusion
Planning

School of Life and Medical Sciences

Faculty of Brain Sciences
Faculty of Medical Sciences
Faculty of Life Sciences
Faculty of Population Health Sciences

School of the Built Environment, Engineering and Mathematical and Physical Sciences

The Bartlett Faculty of the Built Environment
Faculty of Engineering Sciences
Faculty of Mathematics and Physical Sciences

School of Laws, Arts and Humanities, and Social and Historical Sciences

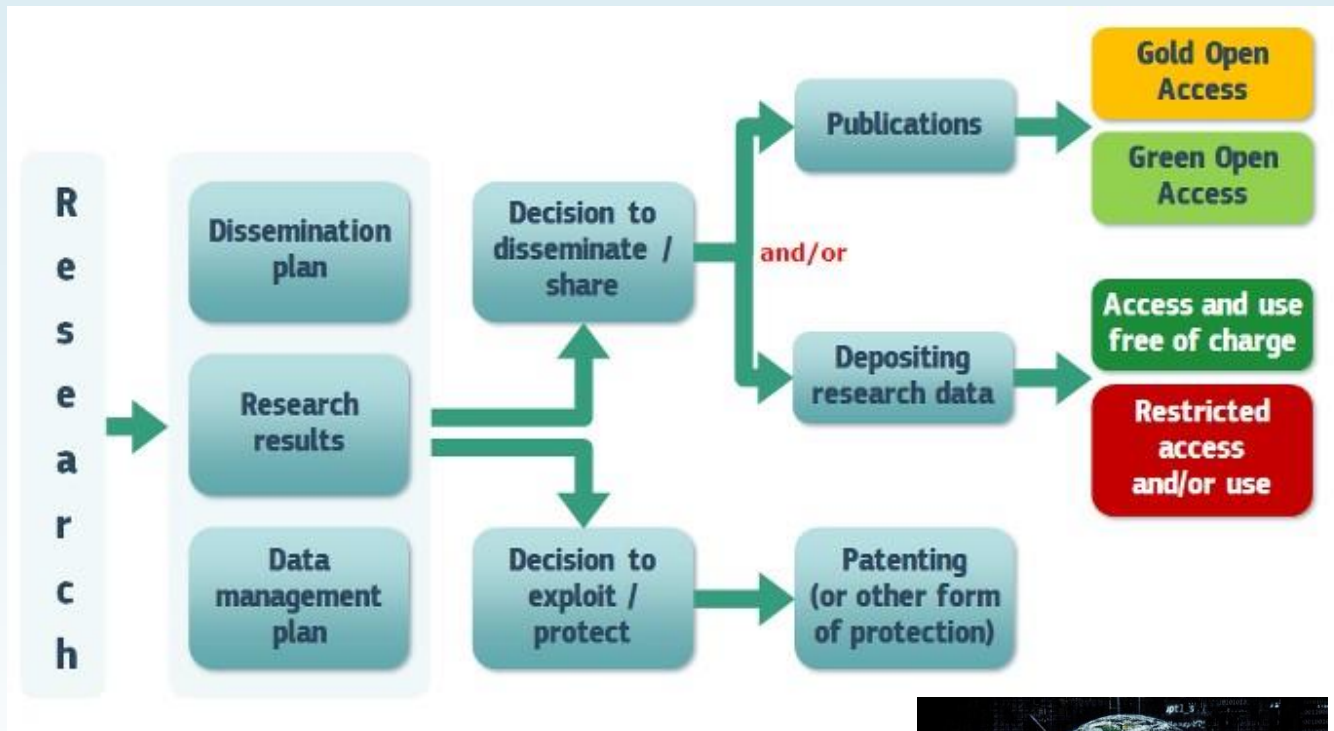
Faculty of Arts and Humanities
Faculty of Social and Historical Sciences
Faculty of Laws

UCL Institute of Education

Wholly owned subsidiary companies (within OVP)

UCLB
UCLC

Research Data – a new currency



❑ UCL RDR (Research Data repository)



Graphic from: H2020 Online Manual

http://ec.europa.eu/research/participants/docs/h2020-funding-guide/cross-cutting-issues/open-access-data-management/open-access_en.htm

Metadata

- ❑ If you don't need to follow a [discipline-specific schema](#), or [funder's recommendations](#), then we advise you to use the [DataCite metadata schema](#)
- ❑ As a general rule DataCite recommends that your metadata should at least specify:
 - ❑ **an identifier** (a DOI),
 - ❑ **a creator** (the name and affiliation of the main researchers involved in producing the dataset),
 - ❑ **a title** (the name or title by which the dataset is known),
 - ❑ **a publisher** (the name of the entity that holds the dataset),
 - ❑ **a publication date** (the year when the dataset was or will be made publicly available) and
 - ❑ the **type of resource** you are describing.
- ❑ If you think that your data requires description with fields that are not covered in the DataCite schema, please contact the [Digital Curation Team](#) for advice.

Criteria for selection and preservation

Long-term preservation and 'archiving'

You should think about what will happen to the data after the end of your project, where it will be stored, for how long, and how to make it accessible in the long term. You will also, of course, need to decide what will be made available, from raw data to final outputs. All of this may be determined, wholly or in part, by your [funder or research council](#).

Formats & obsolescence

Options for long-term storage

You can store your data in the long term in the UCL environment, using:

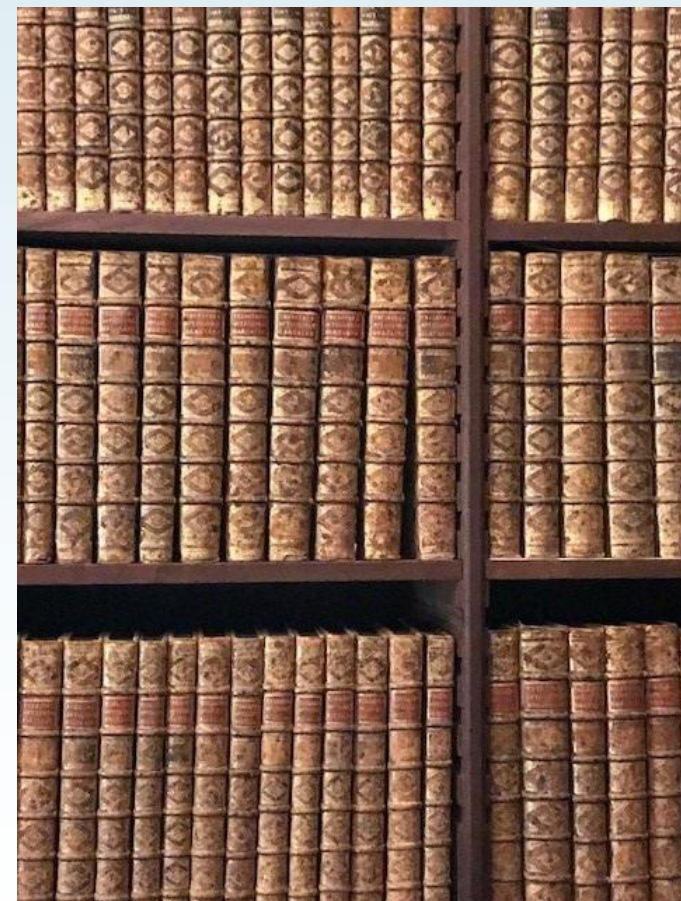
- **UCL Research Data Repository:** if you need to make publicly accessible your research datasets you can use this infrastructure. [Guidance](#) is available.

Email the [Repository support team](#) for help.

- **UCL Records Office:** when research has ended, hard copy (non-electronic) records which must be retained should be sent to the [UCL Records Office](#). This is the only approved place of deposit for such UCL's administrative and research records.
- departmental servers.

[Funders](#) and [publishers](#) might also have their own repository or might direct you to deposit your research data in their chosen repository.

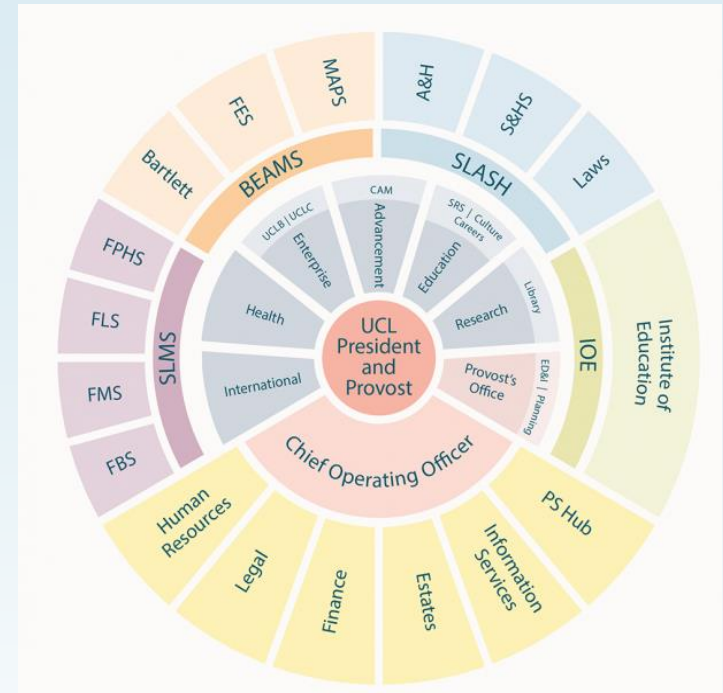
External repositories can be used to preserve your data, for example [re3data.org](#) is a searchable registry of international research data repositories.



Web link: [here](#)

Stakeholders

- ☐ UCL researchers
- ☐ UCL Information Services Division
- ☐ UCL Library Services
- ☐ Research Funders
- ☐ Research Evaluation – Research Excellence Framework
- ☐ EOSC – European Open Science Cloud
 - ☐ With LERU members



e 20
u 18
• a t

The European Open Science Cloud

Launch Event



EOSC





23 November 2018,
10:00 – 13:30 hrs
University of Vienna
Library, main reading room

Licences

- ❑ Licensing your data sets out clearly the terms of use of your data, potentially avoiding future complications.
- ❑ UCL's [Research Data Policy](#) sets out UCL's expectations around the licensing of data created by UCL researchers:
- ❑ "Unless covered by third party contractual agreements, legislative obligations or provisions regarding ownership, UCL research data will be provided using a [Creative Commons CC0](#) waiver; supported by data citation guidelines similar to the existing publishing conventions. This will ensure re-used data are unambiguously identifiable and that appropriate credit and attribution is made."

Costs

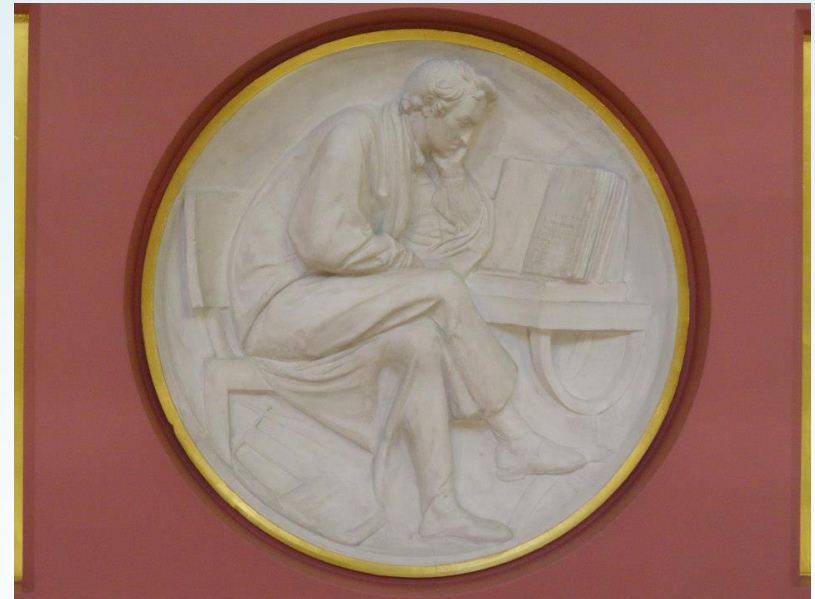
- ❑ Never-ending costs??
- ❑ Capital costs for establishing RDR = £0.5m
 - ❑ Hardware and Project management
 - ❑ Current staff also supported project
- ❑ Ongoing costs
 - ❑ 2.0 FTE in Library
 - ❑ 2 more staff needed
 - ❑ 1.1 FTE in ISD to manage technical side of the RDR
 - ❑ More staff needed for technical support as service grows



Display at Blickling Hall, Norfolk, UK

Content

- ☐ European contexts
- ☐ Research Data - LEARN
- ☐ Drivers for RDR
- ☐ RDR
 - ☐ Establishing the repository
 - ☐ Architecture
 - ☐ Metadata
 - ☐ Criteria for selection and preservation
 - ☐ Stakeholders
 - ☐ Licensing
 - ☐ Costs
- ☒ Incentives
- ☐ Conclusion



Plaster Relief by John Flaxman,
Flaxman Gallery, UCL

Take-home message

*It will be impossible
to implement Open Science harmoniously
without a large, significant and determined consensus
on new ways to evaluate research and researchers.*

**Professor
Bernard
Rentier,
Rector
Emeritus,
University
of Liège**

OAI11,
Geneva,
19-21 June
2019



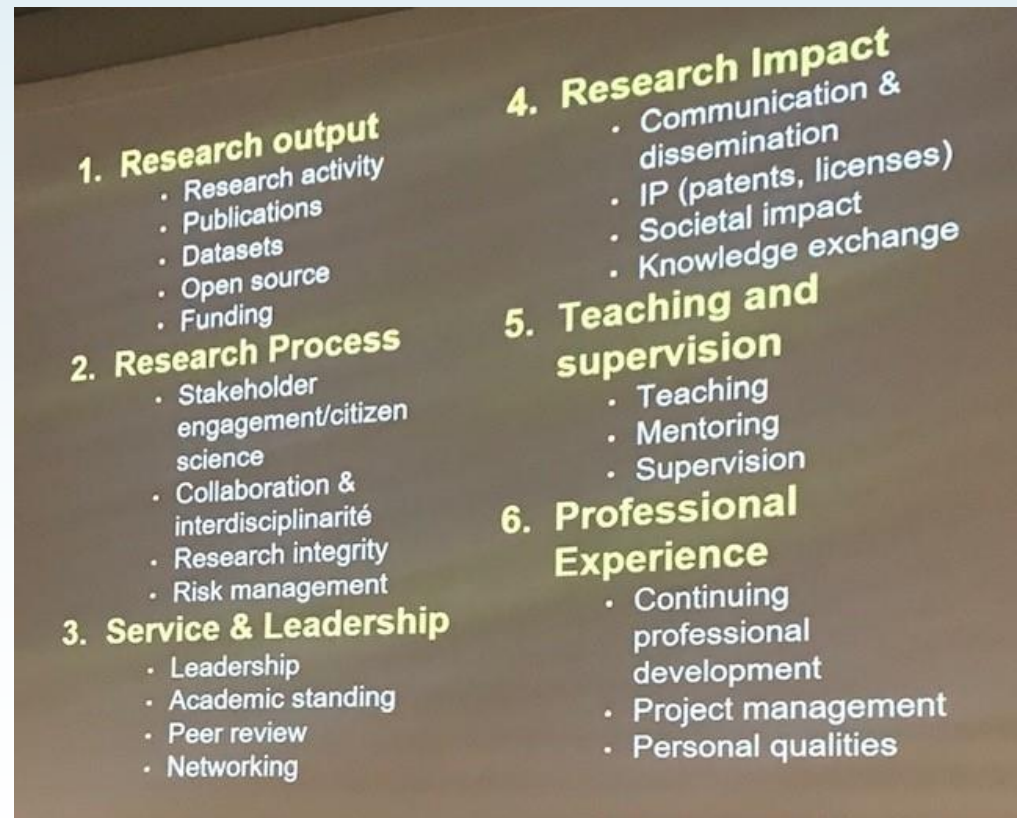
Evaluating research careers in an Open Science landscape

- ❑ European Commission report on evaluating research careers in the context of Open Science

- ❑ https://ec.europa.eu/research/openscience/pdf/os_rewards_wgreport_final.pdf

- ❑ 23 criteria identified for a rounded evaluation

- ❑ Matrix **not** metrics



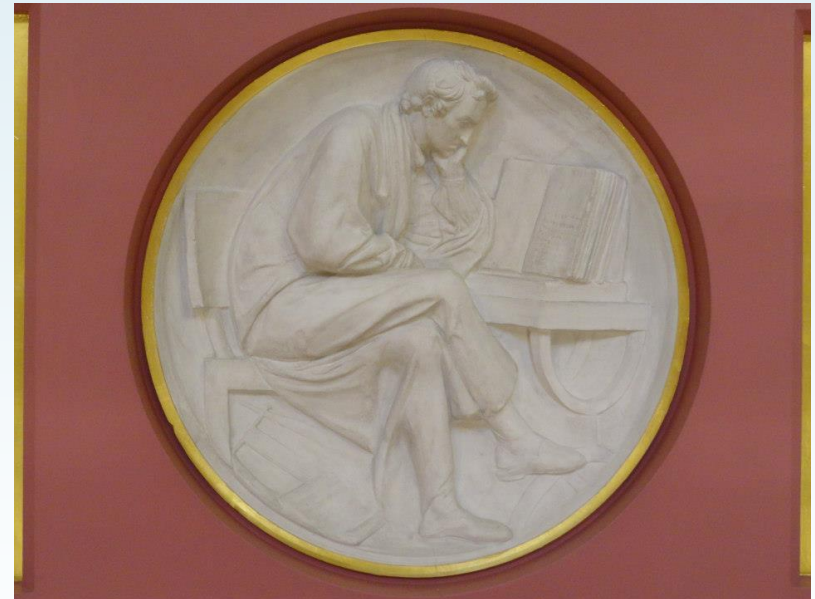
Rewards

- ❑ Insert Open Science principles into career frameworks
- ❑ Develop institutional policies for rewarding Open Science
- ❑ Apply to appointment, promotion and appraisal procedures
 - ❑ UCL has included openness into its new academic promotions framework
 - ❑ <https://www.ucl.ac.uk/human-resources/sites/human-resources/files/ucl-130418.pdf>



Content

- ☐ European contexts
- ☐ Research Data - LEARN
- ☐ Drivers for RDR
- ☐ RDR
 - ☐ Establishing the repository
 - ☐ Architecture
 - ☐ Metadata
 - ☐ Criteria for selection and preservation
 - ☐ Stakeholders
 - ☐ Licensing
 - ☐ Costs
- ☐ Incentives
- ☒ Conclusion



Plaster Relief by John Flaxman,
Flaxman Gallery, UCL

Conclusion

- ❑ Research Data the 'new currency' in research outputs
- ❑ RDR fulfils ambitions expressed in UCL's Research Strategy
- ❑ Costs are always a challenge
- ❑ RDR *does* embody UCL's leadership in Europe in the area of Open Science



UCL Student Centre, opened 18/2/19