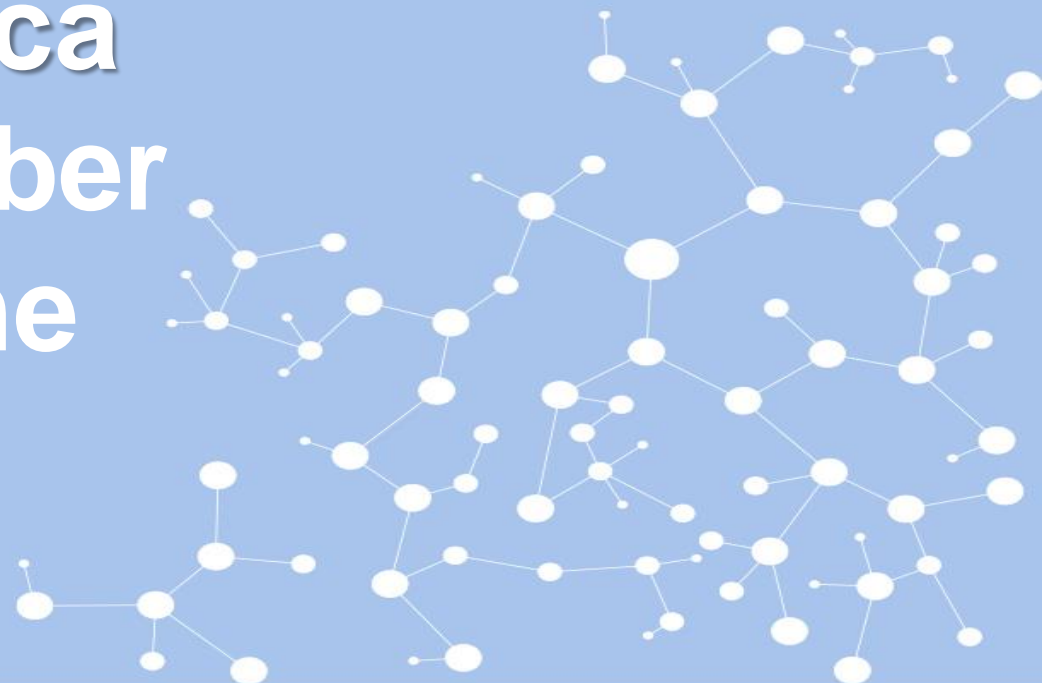


Containerised sea trade behaviour in Mexico (both coasts) and Central America during January to September 2020 compared to the same period in 2019

Ricardo J. Sánchez & Eliana Barleta



UNITED NATIONS

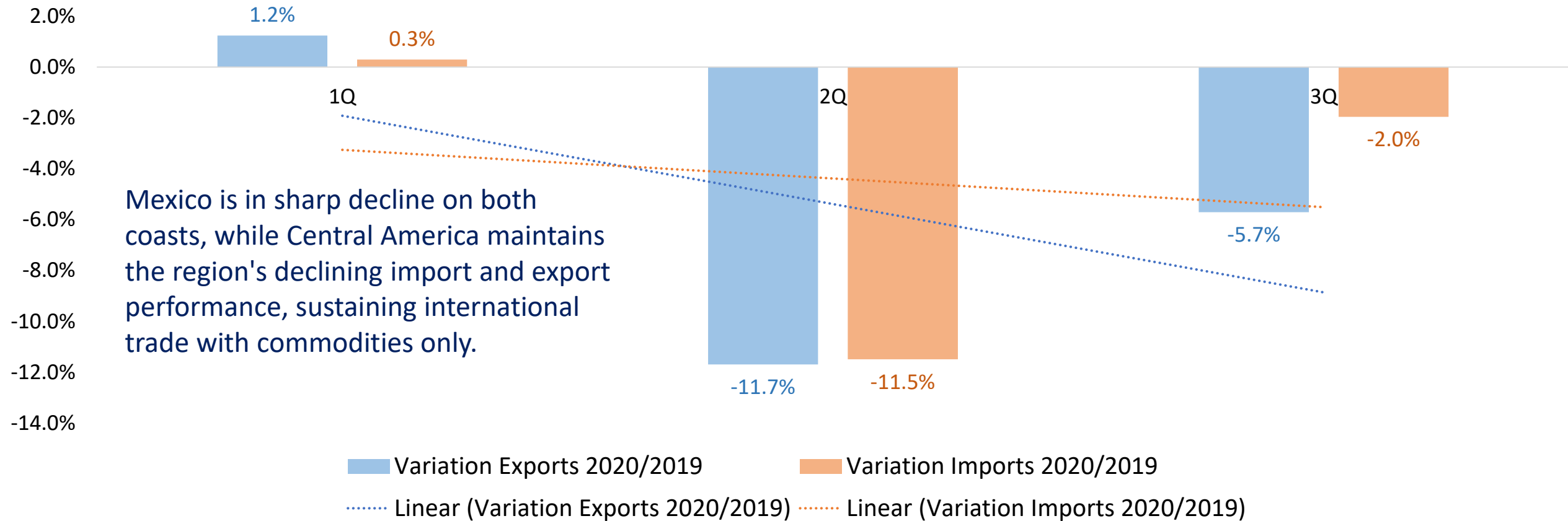
ECLAC



Mexico and Central America



Total trade Central America

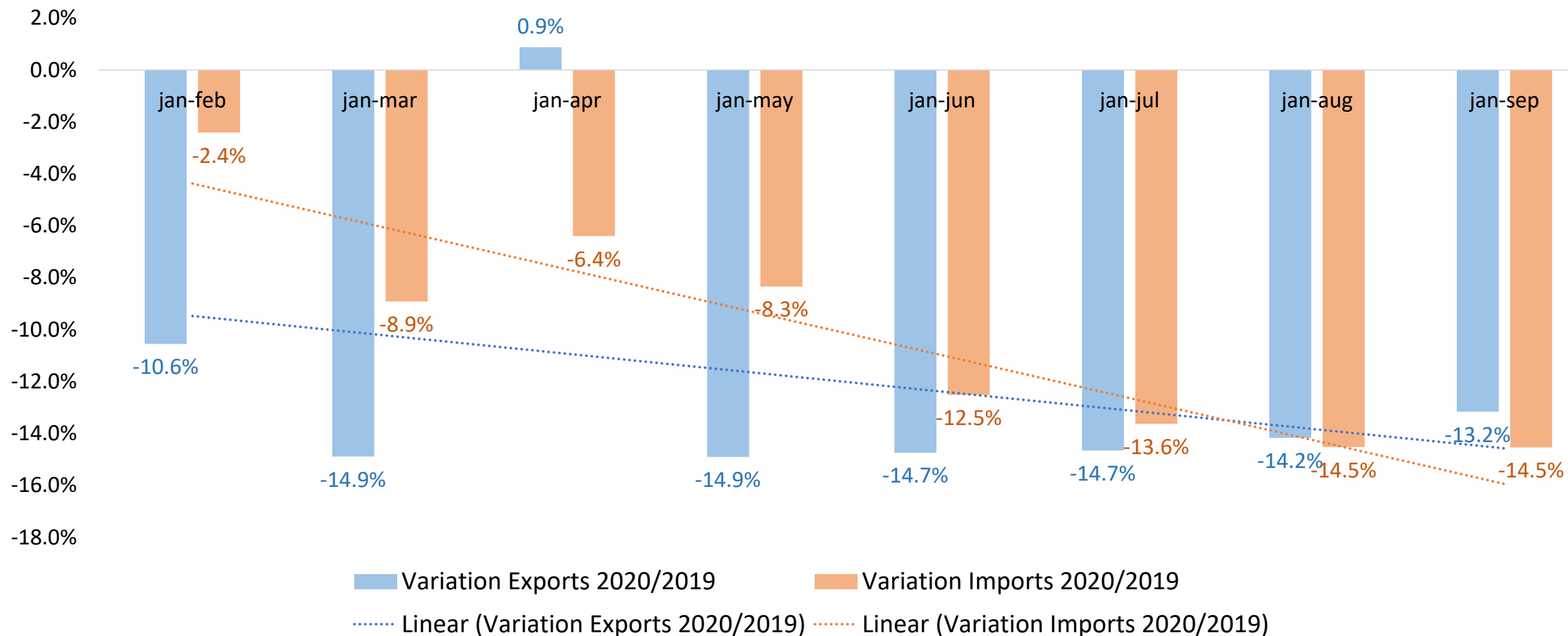


Source: Comisión Centroamericana de Transporte Marítimo (COCATRAM).

Notes: Variations of TEU; Ports considered: Acajutla, El Salvador; Quetzal, Barrios, Santos Tomas de Castilla, Guatemala; San Lorenzo, Castilla, Cortés, Honduras; Corinto, Arlen Siu, Nicaragua; Caldera, Limón-Moín, APM, Costa Rica.

For Central American countries, data are not available on a monthly basis, but on a quarterly basis, so the chart shows quarterly changes rather than the cumulative month-on-month one as in the previous charts.

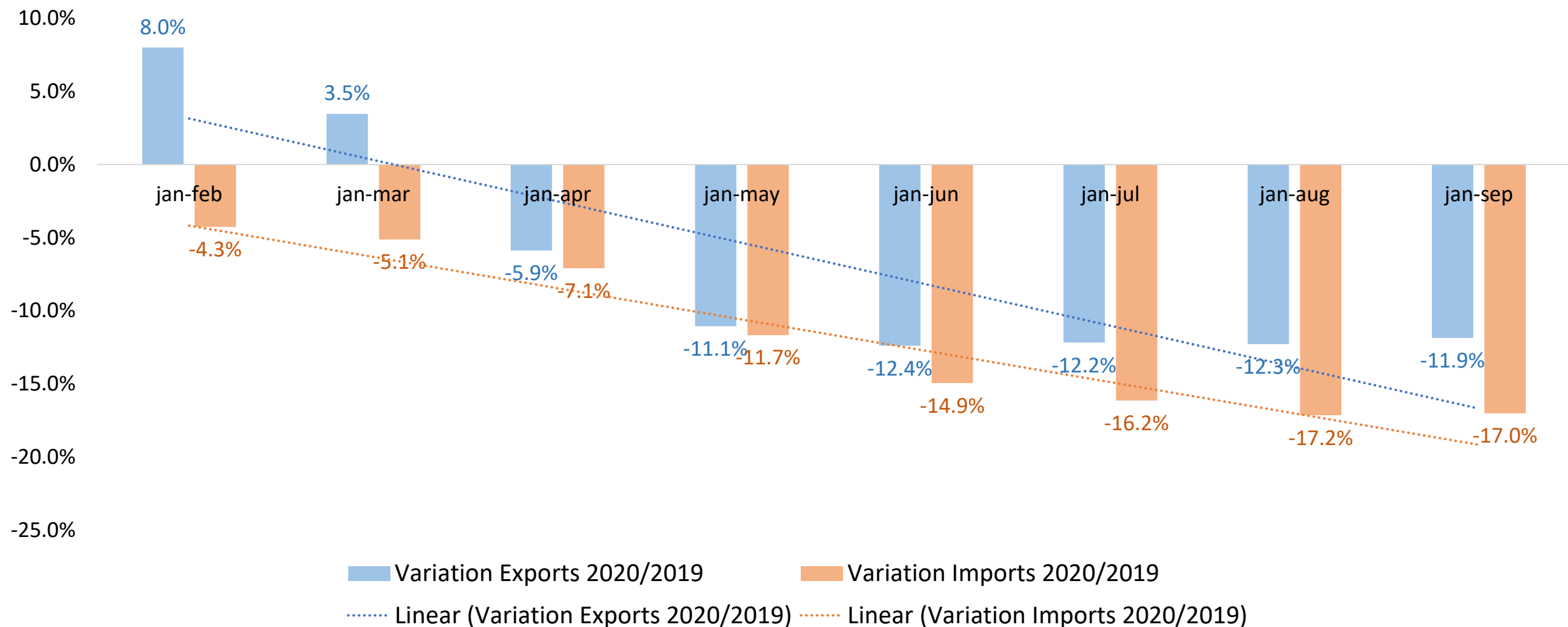
Total trade Mexico (Gulf)



Source: Secretaría de Comunicaciones y Transporte de México.

Notes: Variations of TEU; Ports considered: Altamira, Tampico & Veracruz.

Total trade Mexico (Pacific)



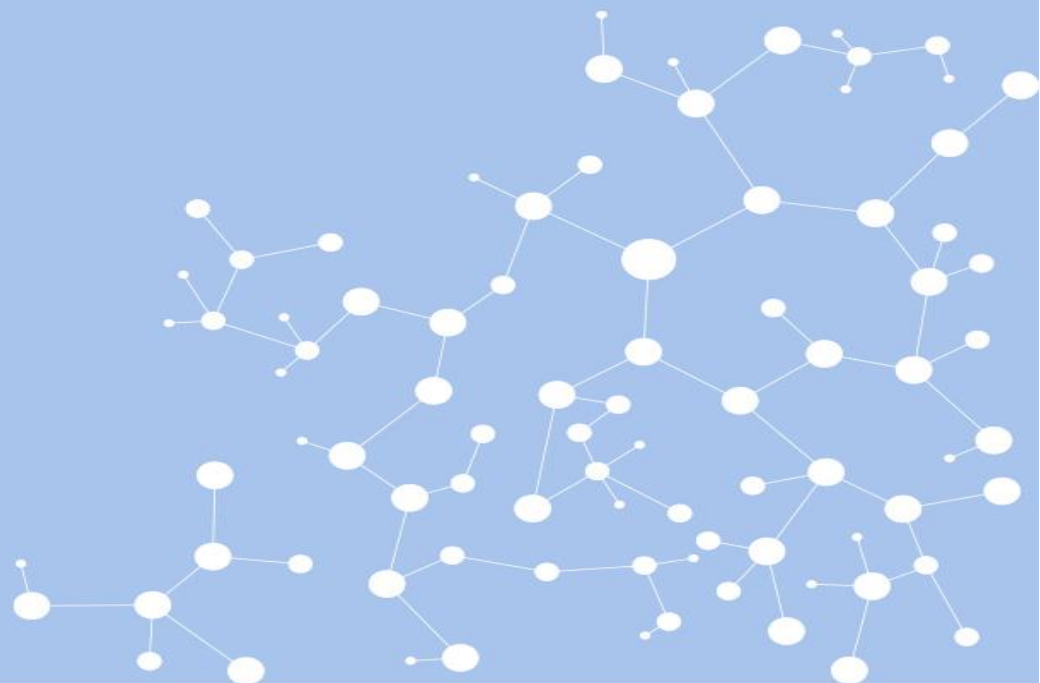
Source: Secretaría de Comunicaciones y Transporte de México.

Notes: Variations of TEU; Ports considered: Manzanillo & Lázaro Cárdenas.

Ricardo J. Sánchez & Eliana Barleta

ricardo.sanchez@un.org
logisticsandinfrastructure@un.org

Infrastructure Services Unit
International Trade & Integration Division
Economic Commission for Latin America and the Caribbean



ECLAC

