

# The containerised sea trade performance in the Caribbean & Panama (both coasts) during the first three quarters of 2020 compared to the same period in 2019

Ricardo J. Sánchez & Eliana Barleta



UNITED NATIONS

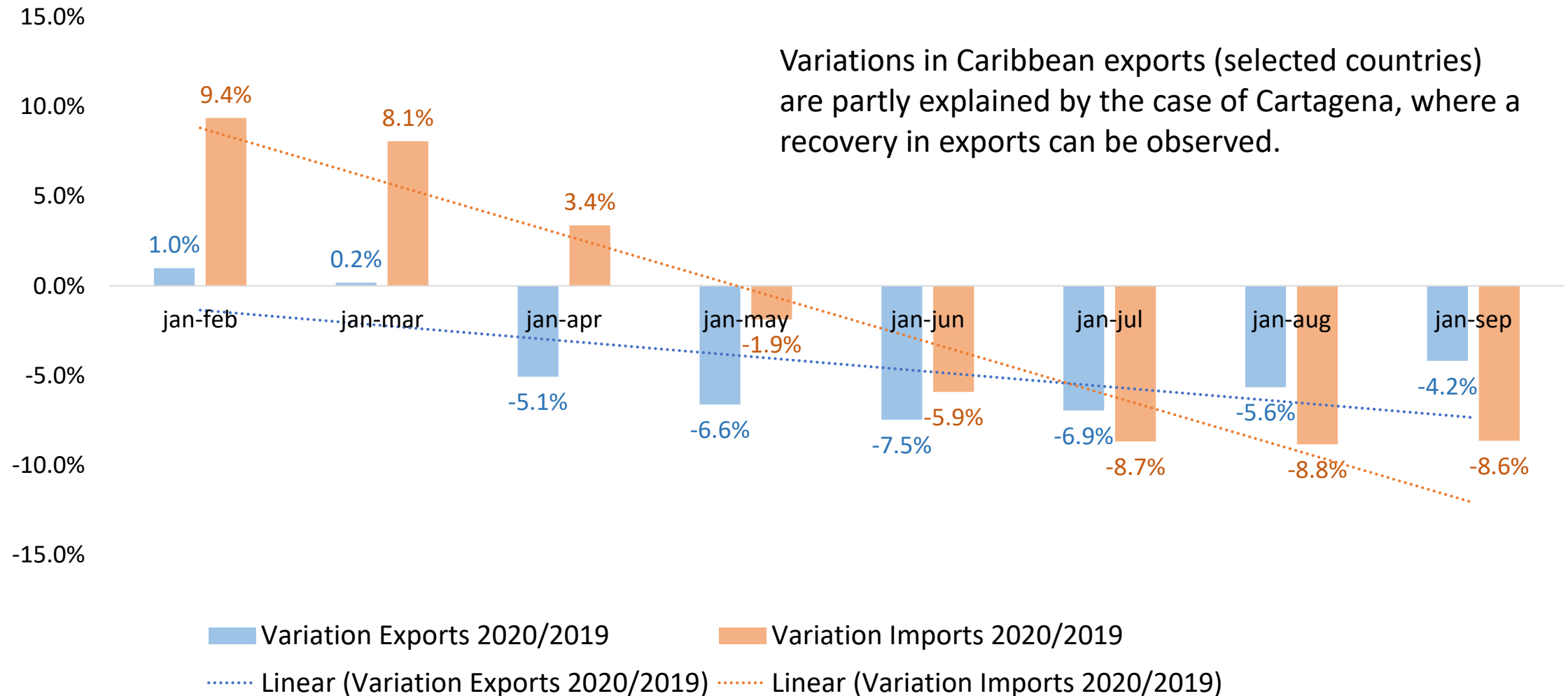
ECLAC



# Caribbean and Panama



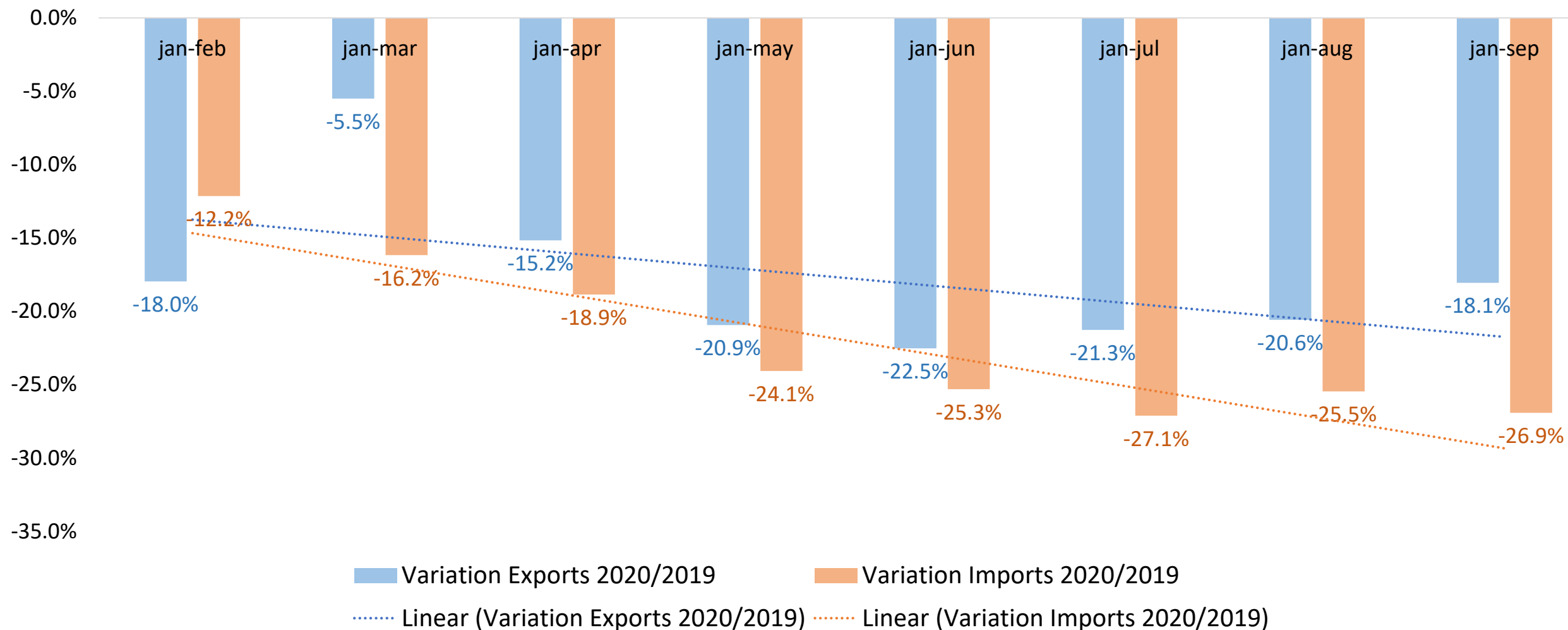
# Total trade Caribbean (selected ports)



Source: Port Authorities and Port Operators.

Notes: Variations of TEU; Ports considered: Kingston, Jamaica; Port of Spain, Point Lisas, Trinidad & Tobago; Bahía de Cartagena, Colombia.

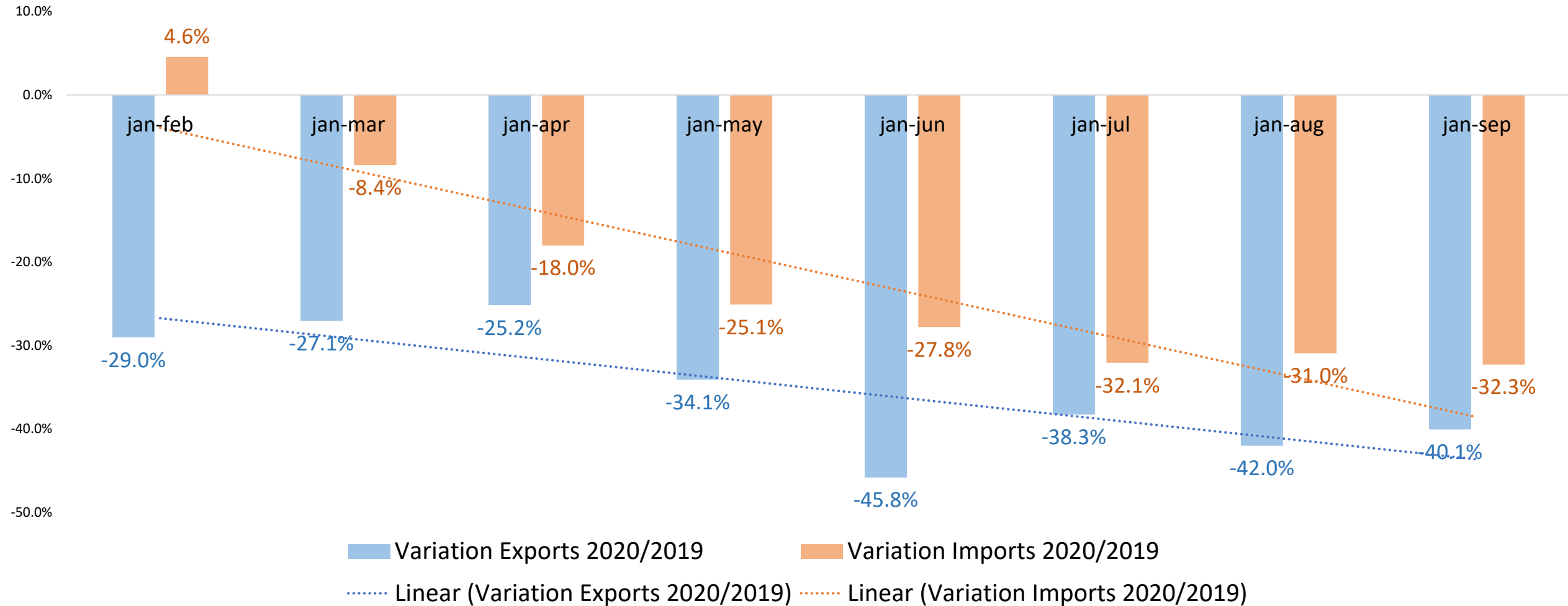
# Total trade Caribbean coast of Panama



Source: Comisión Centroamericana de Transporte Marítimo (COCATRAM) & Autoridad Marítima De Panamá.

Notes: Variations of TEU; Ports considered: Colón, Manzanillo and Cristóbal.

# Total trade Pacific coast of Panama



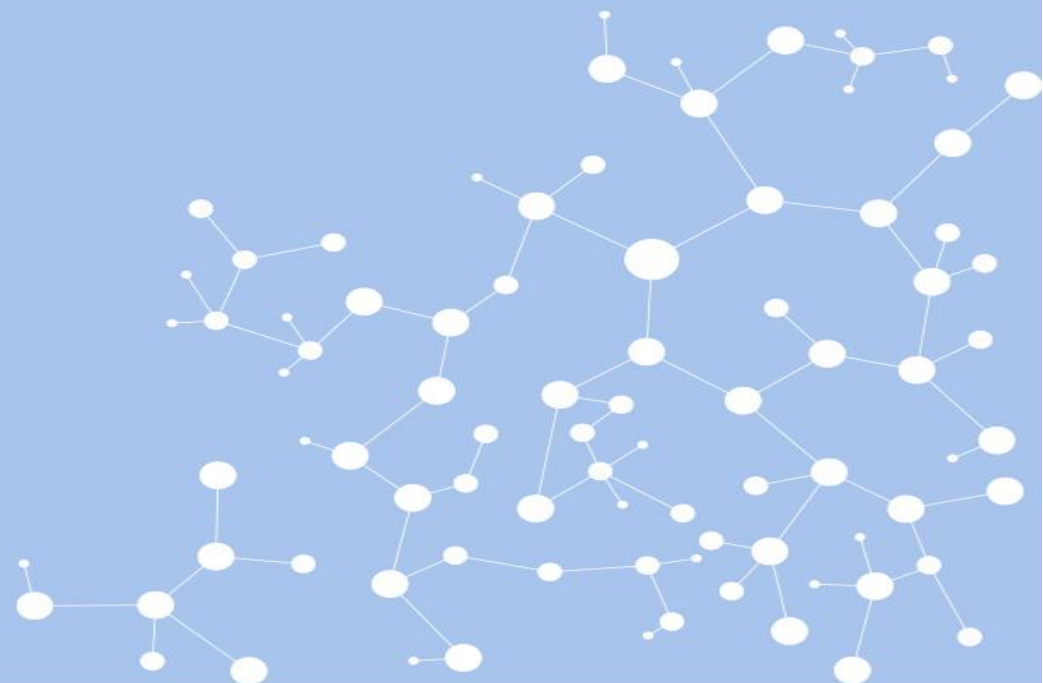
Source: Comisión Centroamericana de Transporte Marítimo (COCATRAM) & Autoridad Marítima De Panamá.

Notes: Variations of TEU; Ports considered: Balboa & Rodman (PSA).

**Ricardo J. Sánchez & Eliana Barleta**

[ricardo.sanchez@un.org](mailto:ricardo.sanchez@un.org)  
[logisticsandinfrastructure@un.org](mailto:logisticsandinfrastructure@un.org)

Infrastructure Services Unit  
International Trade & Integration Division  
Economic Commission for Latin America and the Caribbean



CEPAL

