



**UN-GGIM:Americas**

REGIONAL COMMITTEE OF UNITED NATIONS  
ON GLOBAL GEOSPATIAL INFORMATION  
MANAGEMENT FOR THE AMERICAS

# 9° SESSION

## UN-GGIM: Americas

### Grupo de Trabajo para el Marco Integrado de Información Geoespacial para las Américas (IGIF)

Isis Tejada

Session 4



  
**REPÚBLICA DE PANAMÁ**  
GOBIERNO NACIONAL

**AUTORIDAD NACIONAL  
DE ADMINISTRACIÓN  
DE TIERRAS**  
Instituto Geográfico Nacional "Tommy Guardia"

November 28, 29 and 30  
Santiago de Chile, ECLAC

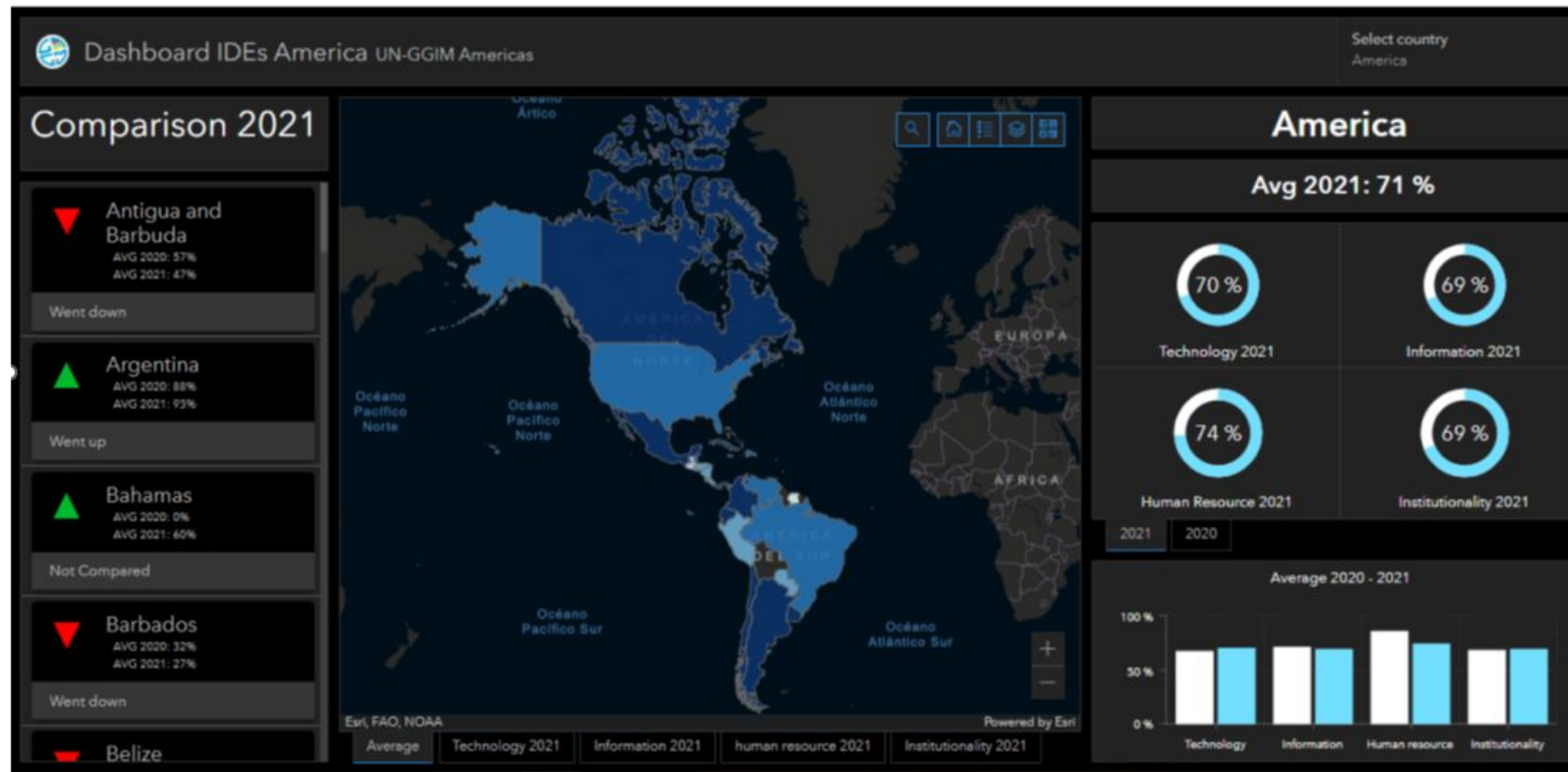
# Background

- The work structure of the Regional Committee, which has operated since 2017 to date, considers the existence of 4 Working Groups, coordinated on a voluntary basis, and in which Member States participate according to their interests and needs:

(GT-IIEG) Information Integration Statistics and Geospatial	(GT – Disasters) disasters	(GT-IDE) Data Infrastructures geospatial	(GT-GRFA) Framework Geodesic for the Americas
<ul style="list-style-type: none"><li>• Promote the integration of Statistical and Geospatial information.</li><li>• Promote the use of data and geospatial information in decision-making and public policy design.</li><li>• Develop and implement standards that facilitate and ensure the quality of Statistical and Geographical integration.</li></ul>	<ul style="list-style-type: none"><li>• Geospatial Information and Disaster Services: Implement the Geospatial Information and Services (GISD) Strategic Framework proposed by the UN GGIM Expert Committee.</li></ul>	<ul style="list-style-type: none"><li>• Diagnose the SDI in the region.</li><li>• design tools evaluation and monitoring regarding the state of progress of the SDI.</li><li>• Disseminate regional initiatives and good practices in the area of IDE, generating a basic guideline document.</li><li>• Promote instances of training and improvement in the region regarding different components of the SDI.</li></ul>	<ul style="list-style-type: none"><li>• Improve the governance structure.</li><li>• Strengthen the geodetic capacities of professionals and technicians.</li><li>• Promote the exchange open geodetic data.</li><li>• Establish and maintain the Geodetic Reference Frame of the Americas.</li><li>• Develop communication and outreach programs</li></ul>

# Background

- Geospatial Data Infrastructures Working Group: Work has been done since 2018, on diagnoses with the objective of knowing the status of SDI's in the Americas.





# Proposal for the Working Groups

The reformulation of the objectives and activities of the current Working Groups, guiding the actions towards the implementation of the UN-GGIM Global Frameworks:

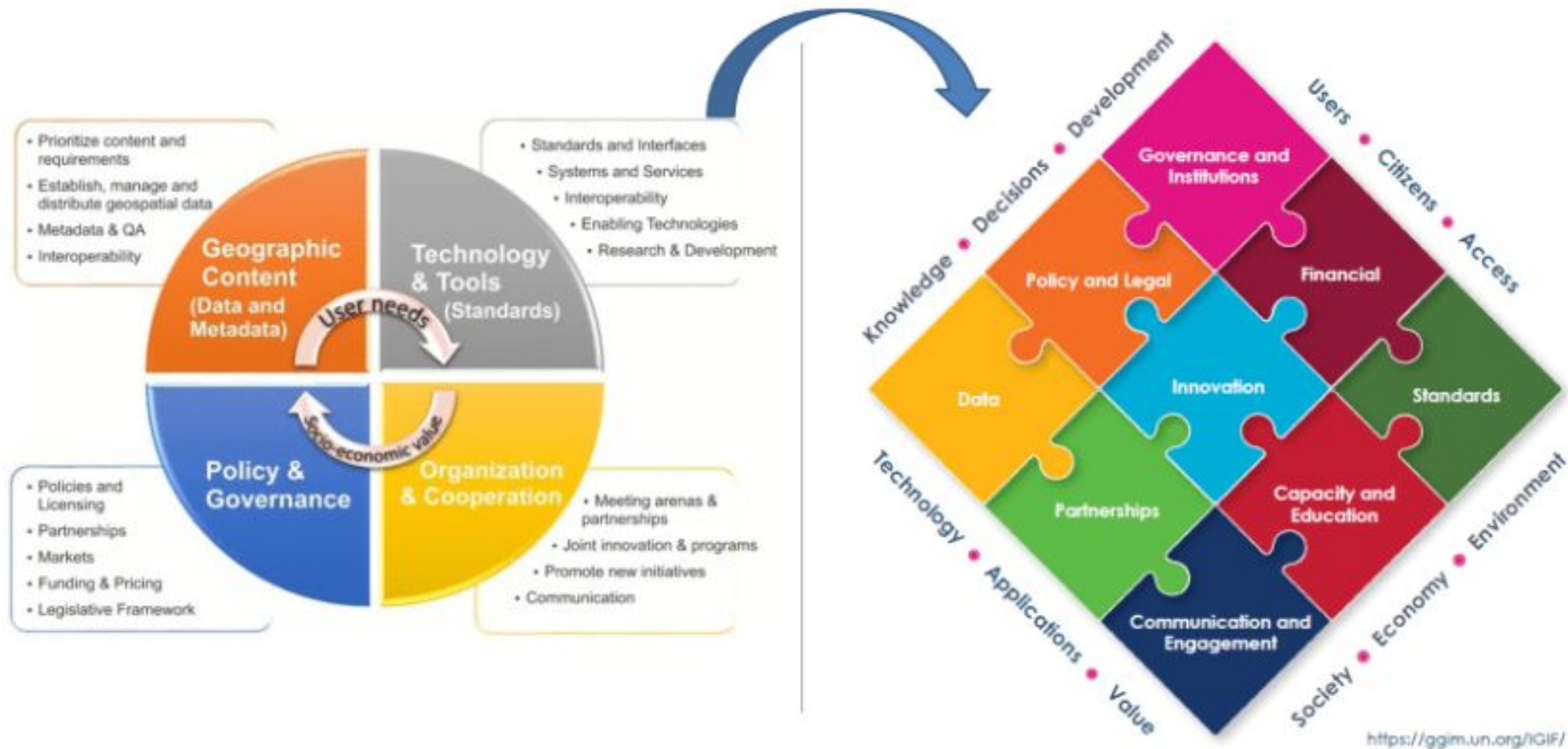
current group	new name
Information Integration Statistics and Geospatial	GT Global Statistical and Geospatial Framework (GSGF)
Data Infrastructure geospatial	GT Integrated Geospatial Information Framework (IGIF)
disasters	GT Strategic Framework for Information and Services Geospatial for Disasters (GISD)
Geodesy	GT Geodetic Reference Frame for the Americas (GRFA)

# Formation and coordination of groups

To reinforce the coordination tasks, the creation of teams from two countries is proposed as co -chairs of each working group with the mission of preparing, executing and monitoring work plans aligned with the objectives and contents of the UN-GGIM global frameworks.

new name	Co-Chairs
Global Geospatial and Statistical Framework (GSGF)	Columbia - Mexico
Integrated Geospatial Information Framework (IGIF)	Panama - Chile
Strategic Framework for Geospatial Information and Services for Disasters (GISD)	Chile – Country 2
Geodetic Reference Frame for the Americas (GRFA)	Brazil - Argentina

# What does it mean



# A work plan has been proposed

Goal	Objective	Activity	Product/ Results
Communication on the IGIF	Publicize the actions to be carried out during the 3 years of work plan coverage	Communication to foreign ministries and focal points on IGIF actions	That the focal points and senior managers know the importance of establishing the IGIF in their countries
Survey I	Learn about the status of IGIF implementation in the region	Development of a basic survey	Sufficient information to develop a strategy to help countries move forward with IGIF implementation
Survey II	Verify the state of progress of the SDIs of the Americas with respect to the strategic paths of the IGIF	Development of a survey to measure country progress in IGIF	Inputs for the Dashboard application with the information collected.
capacity and education	Develop workshops related to the application of the IGIF	technical workshops	Increased implementation of IGIF in the region

# A work plan has been proposed

- Homologation of the survey
- Analysis and evaluation of results
- Disseminate results via a dashboard
- Actions to efficiently promote the IGIF
- Regional trainings on the IGIF
- Work in conjunction with HLG
- Invite member states to participate in this working group

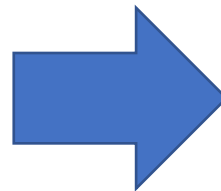
Gobernanza e Instituciones	Aspectos Institucionales	2. ¿Existe una definición de Infraestructura de Datos Geoespaciales Adoptada por la organización?
Gobernanza e Instituciones	Aspectos Institucionales	3. ¿Cuál es el tipo de institución rectora de la Infraestructura de Datos Geoespaciales en su país?
Legal y Políticas	Aspectos Institucionales	4. ¿Existe en su país un instrumento legal que ratifique la existencia de la Infraestructura de Datos Geoespaciales?
Financial	Aspectos Institucionales	5. ¿Cuál es el financiamiento anual aproximado destinado a la Infraestructura de Datos Geoespaciales de su país?



# Por example

## HLG

Capacity Development	
Algeria	Morocco
<b>Argentina</b>	Netherlands
<b>Barbados</b>	<b>Panama</b>
Belgium	Saudi Arabia
<b>Brazil</b>	Singapore
<b>Chile</b>	Sweden
<b>Colombia</b>	UAE
Fiji	United Kingdom
Germany	<b>United States</b>
<b>Mexico</b>	<b>Uruguay</b>
	Tunisia



IMPLEMENT  
ACTIONS  
CAPACITY  
GROUP

MIRROR  
OF THE  
WORKING  
GROUP

# conclusions

- Encourage Member States to collaborate on activities in order to identify weaknesses and work on them.
- Coordinate actions with all the organizations that work on the implementation of IGIF, in order to duplicate actions that could wear down the countries.
- Weaknesses have been identified, such as access to guide documents for implementation, language continues to be an obstacle. A subgroup is proposed to support the translations.
- Work on training for the region, for this an effort must be made to locate resources so that we can cover the entire region.
- Continue with the measurement in the implementation of the IGIF

**THANKS FOR YOUR  
ATTENTION**

