

# **Política de Cambio Climático de Brasil:**

## **De la deforestación hacia una economía baja en carbono**

Carlos A. Klink  
Seminário CEPAL  
13 JUN 2013



Ministério do  
Meio Ambiente

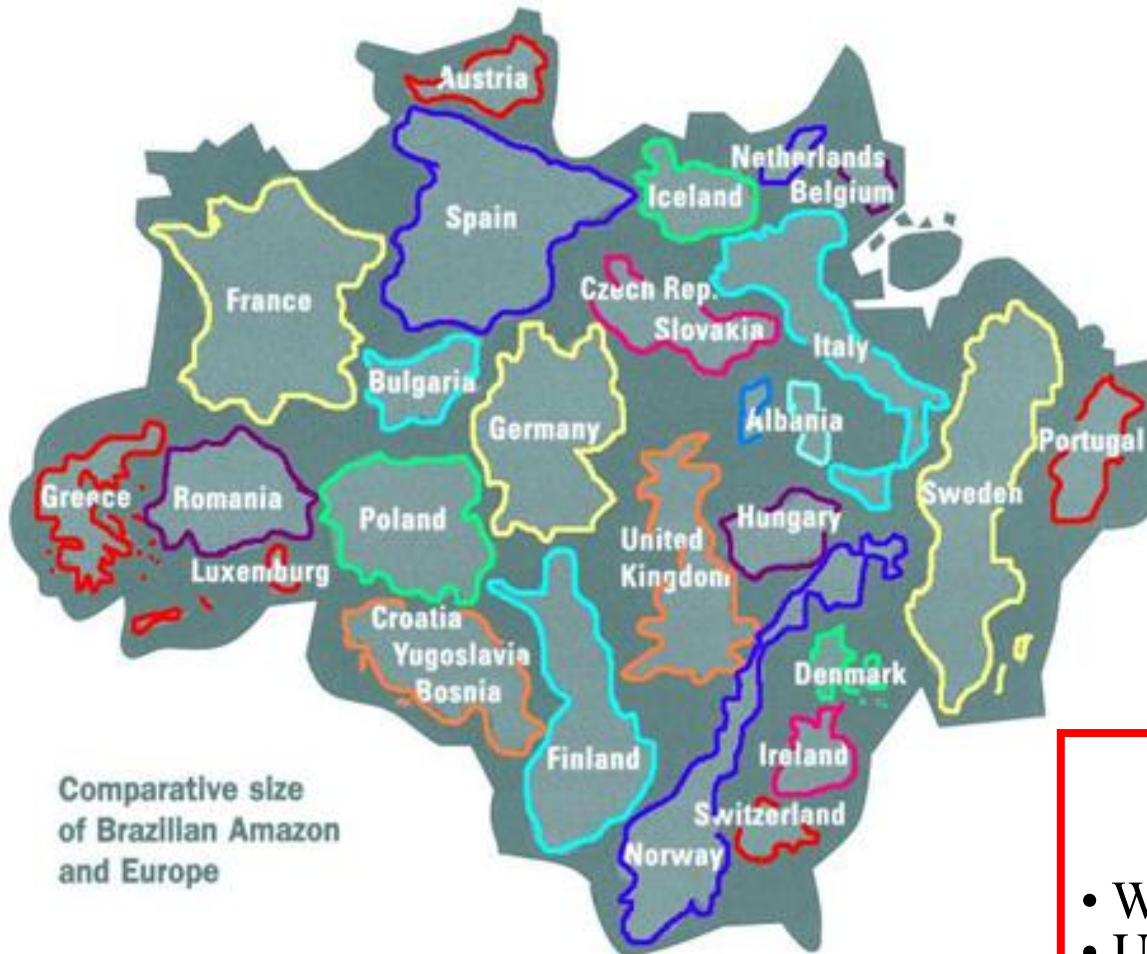
GOVERNO FEDERAL  
**BRASIL**  
PAÍS RICO É PAÍS SEM POBREZA



## Presentation:

- **Reduction Amazon deforestation**
- **Low carbon economy: Brazil's climate change policy**
- **Challenges ahead**

# The Amazon challenge



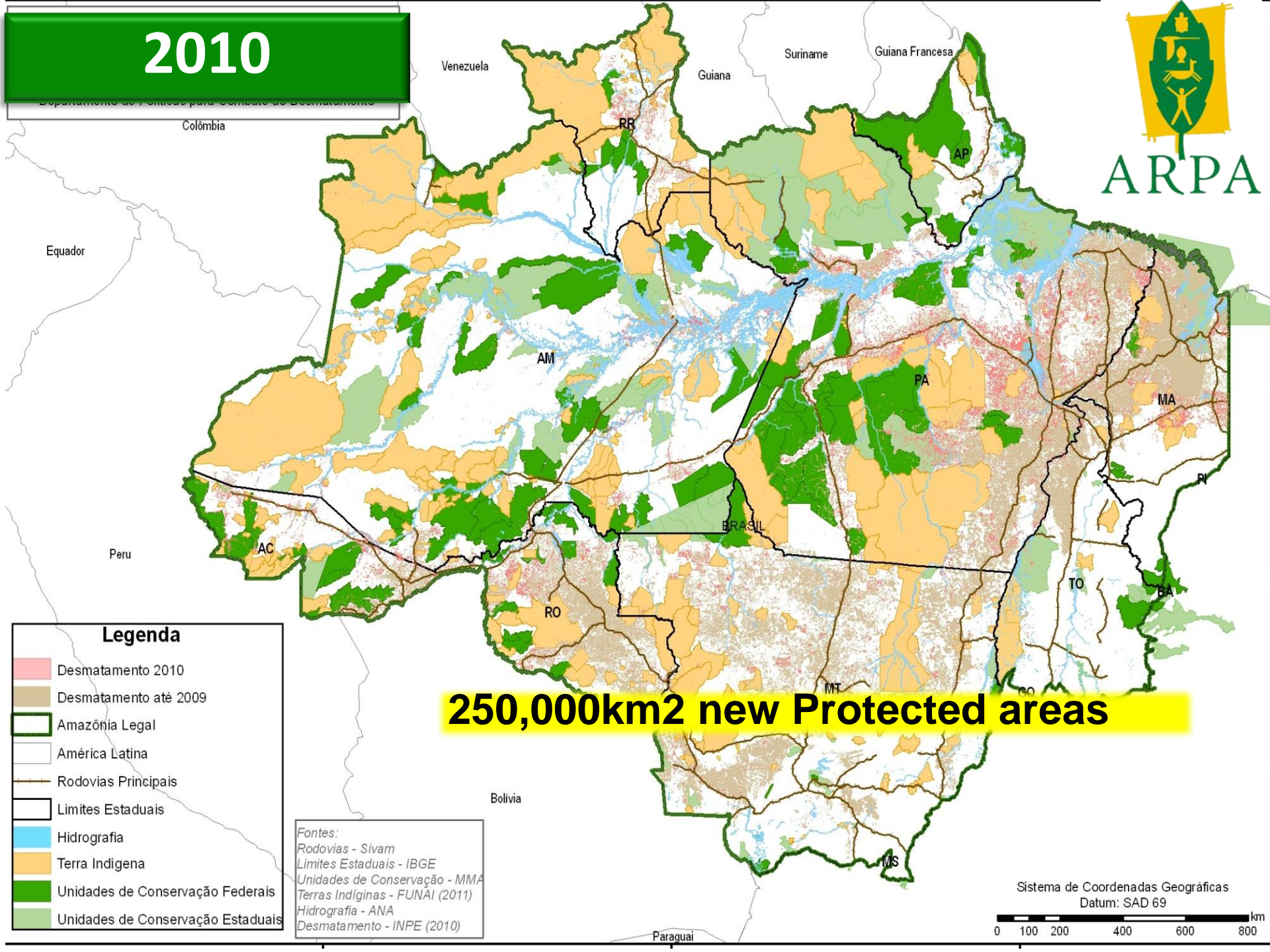
- 5.1 million Km<sup>2</sup>
- 23 million people (12% of Brazil's)
- 350,000 indigenous people
- 70% urban population
- 46% below poverty line (2<sup>nd</sup> poorest region)
- 18% deforested

## Global Benefits

- World's largest rainforest
- Unique biodiversity
- 20% globe's fresh water
- Carbon stocks



# 2010



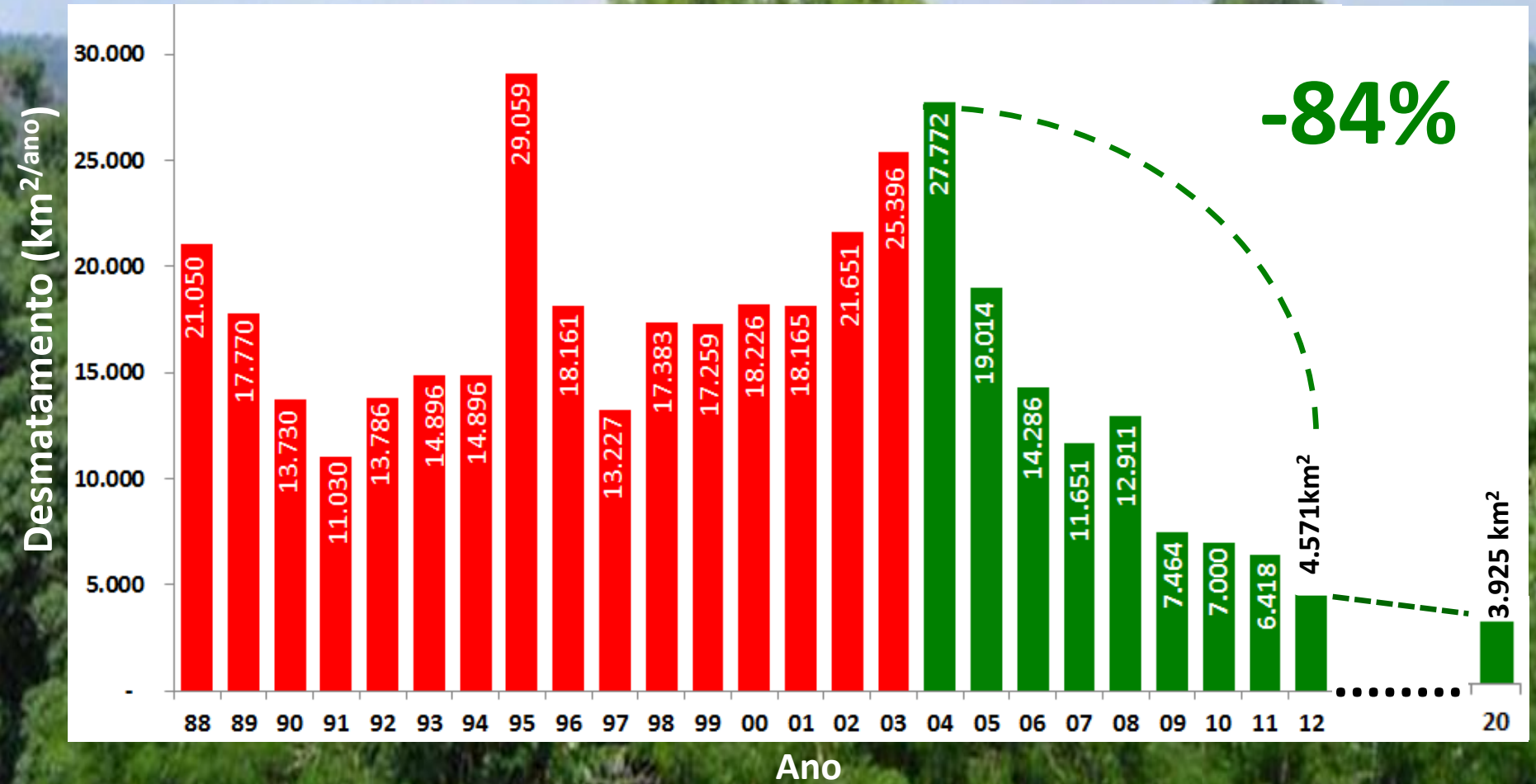
## Legenda

- Desmatamento 2010
- Desmatamento até 2009
- Amazônia Legal
- América Latina
- Rodovias Principais
- Limites Estaduais
- Hidrografia
- Terra Indígena
- Unidades de Conservação Federais
- Unidades de Conservação Estaduais

Fontes:  
Rodovias - Sivam  
Limites Estaduais - IBGE  
Unidades de Conservação - MMA  
Terras Indígenas - FUNAI (2011)  
Hidrografia - ANA  
Desmatamento - INPE (2010)

Sistema de Coordenadas Geográficas  
Datum: SAD 69

0 100 200 400 600 800 km

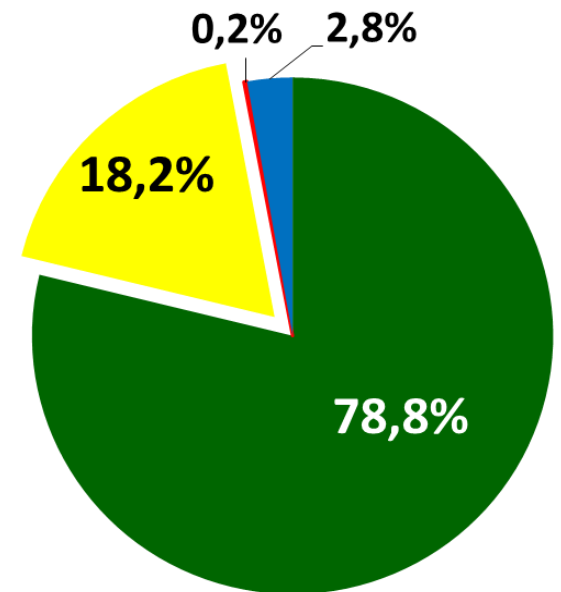


**Deforestation 2012: 4,571 km<sup>2</sup>  
(84% decrease from 2004)**

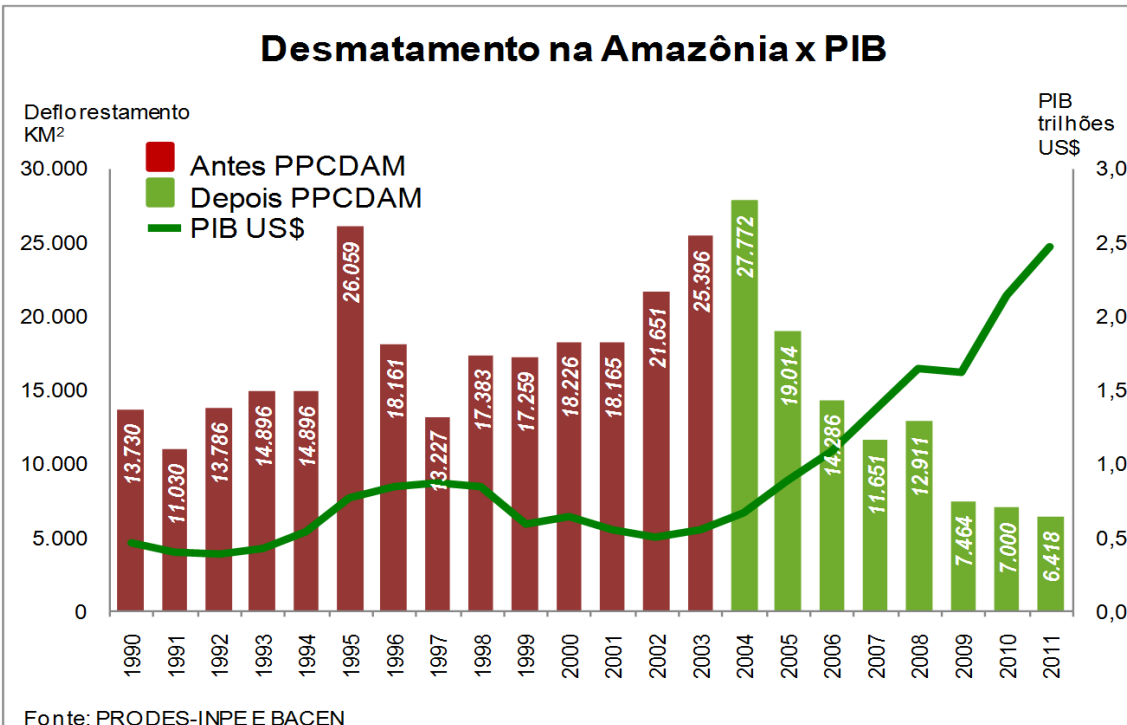
# Brazil reached **76%** of goal (80% reduction deforestation by 2020) Equivalent to **62%** reduction of emissions



**TerraClass  
2010**



**Desmatamento na Amazônia x PIB**



- FLORESTA
- DEFLORESTAMENTO ACUMULADO (1988 - 2009)
- DEFLORESTAMENTO 2010
- HIDROGRAFIA





Agriculture (5%)



**TerraClass**



Planted pasture (66%)



Forest Regrowth (21%)



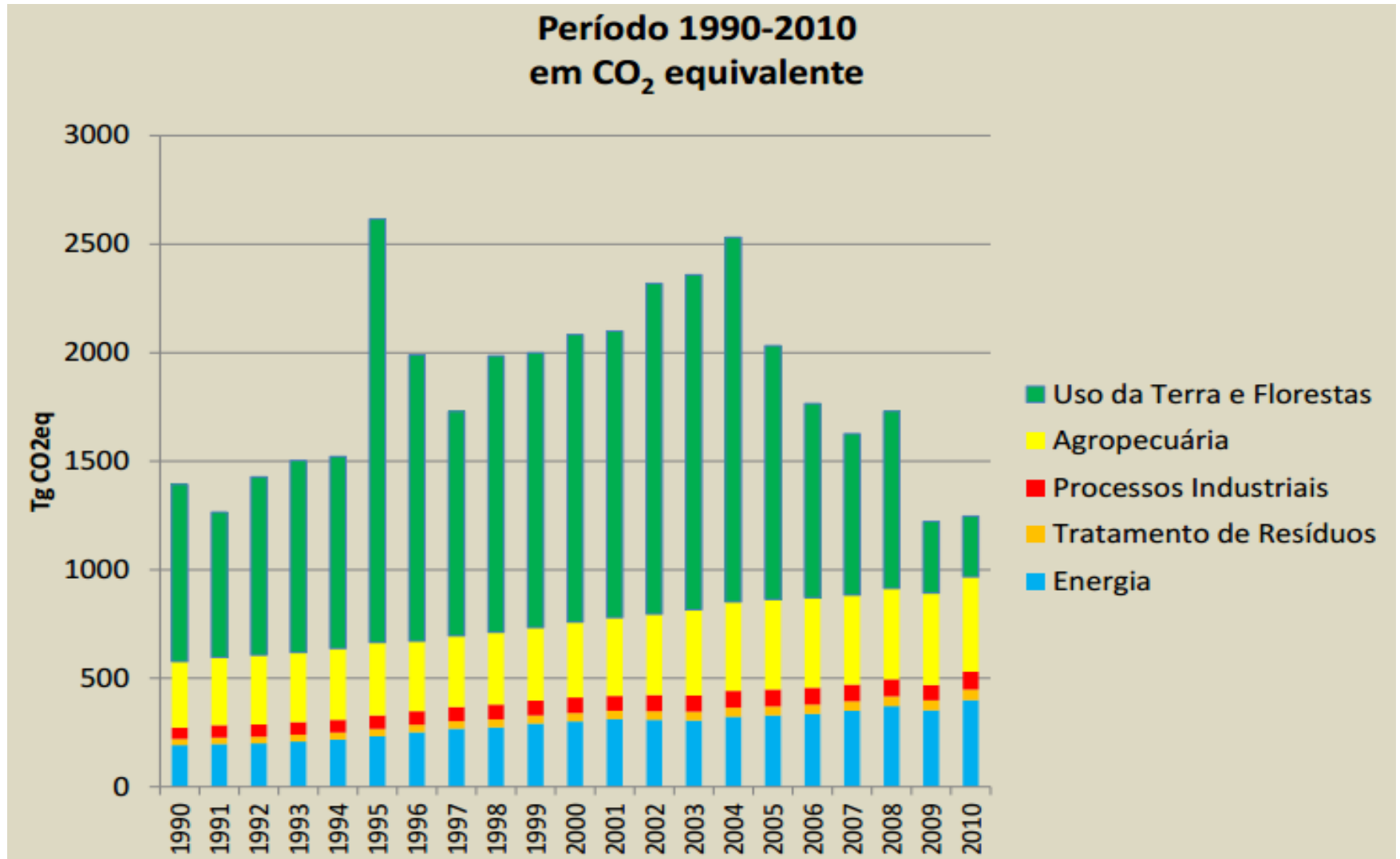
## Control of Deforestation:

- **Forest monitoring**
- **Law enforcement**
- **Credit restriction**



# Yearly estimates GHG emissions

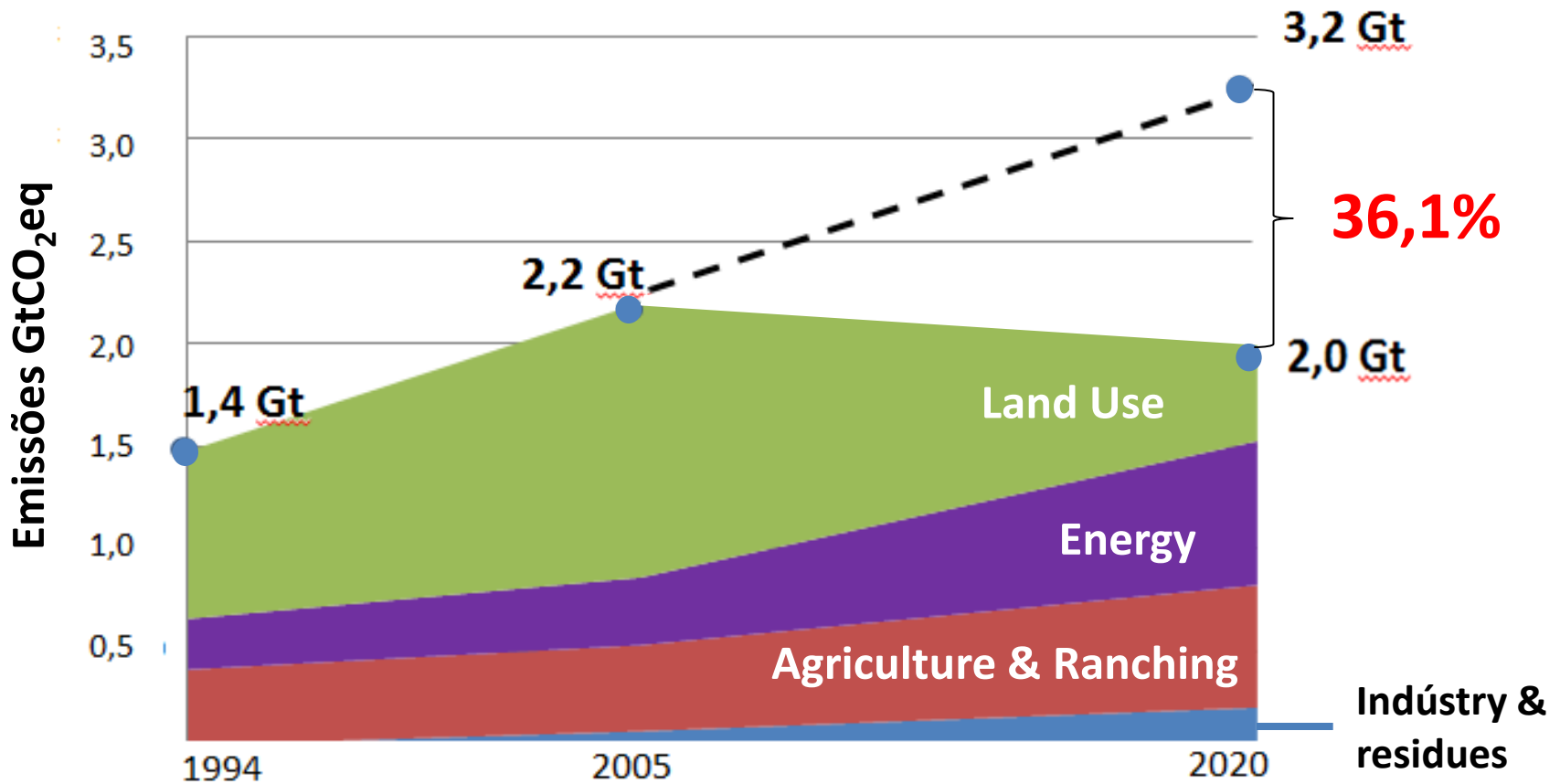
(MCTI 2013)



# National Policy Climate Change

## Voluntary Effort

Reduction 36 - 39% GHGs by 2020



# NAMAS Brasil

Nationally Appropriate Mitigation Actions	Range of Estimated Reduction in 2020 (Mt CO <sub>2</sub> e)	
Reduction in Amazon deforestation	564	564
Reduction in “Cerrado” deforestation	104	104
Restoration of grazing land	83	104
Integrated crop-livestock system	18	22
No-till farming	16	20
Biological nitrogen fixation	16	20
Energy efficiency	12	15
Increase in the use of biofuels	48	60
Increase in energy supply by hydroelectric power plants	79	99
Alternative energy sources	26	33
Iron and steel – charcoal from reforestation	8	10





Ministério do  
Meio Ambiente

GOVERNO FEDERAL  
**BRASIL**  
PAÍS RICO É PAÍS SEM POBREZA

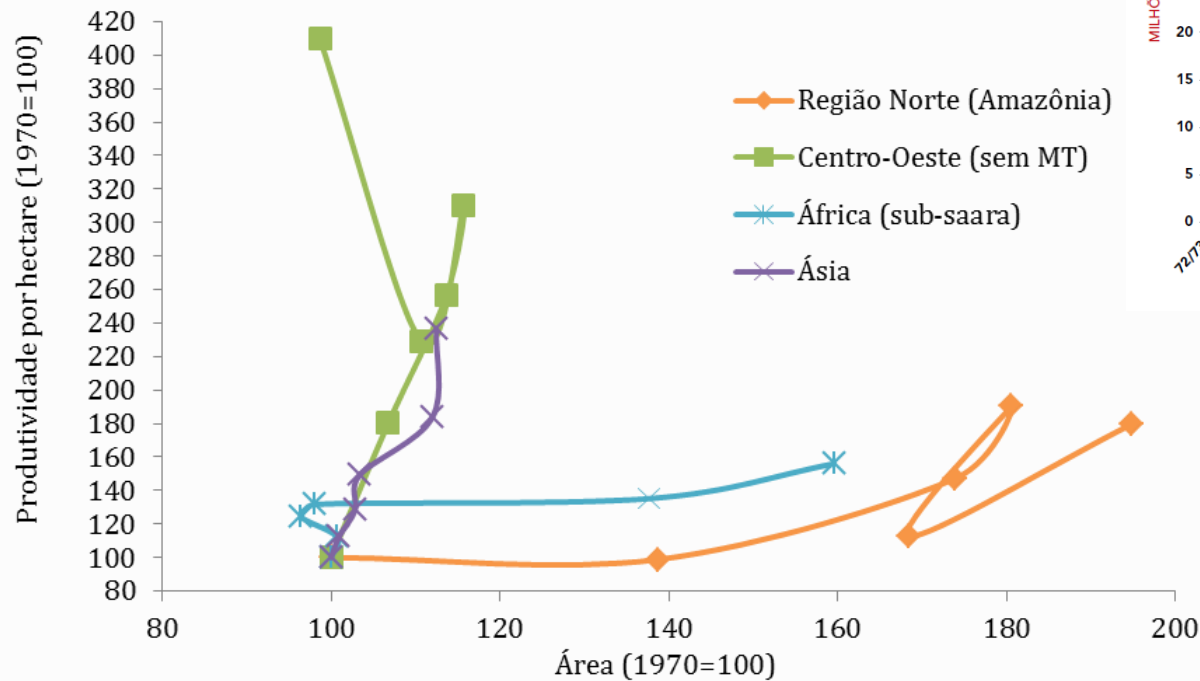
# NAMAS: Deforestation & Sector Plans

PLAN	START	AREA	RESPONSIBLE	STATUS
Amazon	2004	Control deforestation	MMA Chief Staff	3rd. phase (2012-2015)
Low C Ag.	2009	<ul style="list-style-type: none"> <li>- Restoration degraded pastureland</li> <li>- Crop-ranching-forest integration</li> <li>- No till</li> <li>- Biological fixation N</li> </ul>	MAPA MDA	14,000 contracts  US\$2.3 billion
Energy	2010	<ul style="list-style-type: none"> <li>- Hidropower</li> <li>- Biofuels</li> <li>- Renewables</li> <li>- Energy Eff.</li> </ul>	MME EPE	2012-2021
Cerrado	2010	Control deforestation	MMA Chief Staff	Under review
Charcoal (Steel)	2010	Charcoal (Planted forests)	MDIC MMA	Under review

# Policy Integration: Ag Intensification

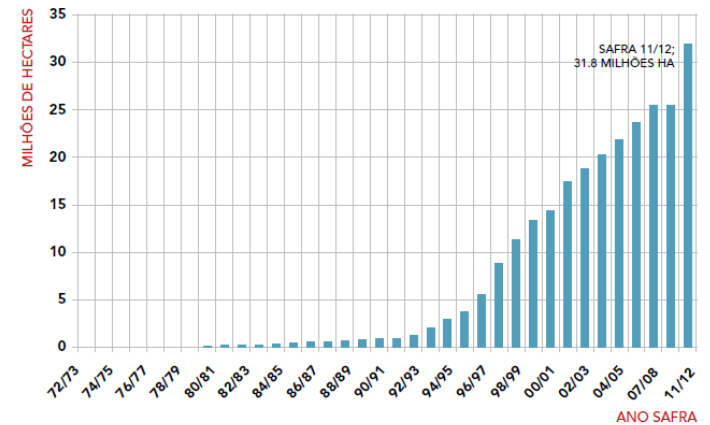
PUC-Rio & CPI  
2013

**Figura 1 - Expansão da Agricultura (1970 - 2006)**



Fonte: FAO, Censos Agropecuários

**FIGURA 3** ÁREA DE PLANTIO DIRETO NO BRASIL — EVOLUÇÃO ENTRE 1972 E 2012 (FEBRAPDP).







## SERVIÇO FLORESTAL BRASILEIRO

2013

- New Forest Concession:  
FLONA Jacundá (RO) – 88,000  
hectares

- New biddings: 442,000  
hectares

# TROPICAL FOREST SECTOR COMPETITIVENESS DIAGNOSTICS IN THE AMAZON

Request for Proposal  
(RFP) 10-BAI-30032010

## PRODUCT III – BENCHMARK

CONSUFOR | ADVISORY & RESEARCH

In association  
with



**Indufor** .forest intelligence

# New Sector Plans

PLANS	SECTORS	COORDINATION
Industry	<ul style="list-style-type: none"><li>- Al, Cement, Pulp &amp; Paper, Chemistry</li><li>- After 2014: Steel, Iron, Glass</li></ul>	MDIC
Mining	<ul style="list-style-type: none"><li>- 13 minerals (80% of production)</li></ul>	MME
Transportation & Urban Mobility	<ul style="list-style-type: none"><li>- Logistics &amp; Cargo: roads, railroads, rivers</li><li>- Public transportation</li></ul>	Min. Transportes Min. Cidades
Health	<ul style="list-style-type: none"><li>- Adaptation measures by SUS</li><li>- Preparedness &amp; response (extreme events &amp; tropical diseases)</li></ul>	MS

# Industry Plan

## Comissão Técnica do Plano Indústria – CTPIN (2012)

MDIC + MMA + CNI

### Work Plan (2012-2015):

Inventories

Energy Efficiency & co-generation

Low Carbon technologies

Recycling

A2F & fiscal arrangements



# Climate Change Fund

- Support mitigation & adaptation (sector plans)
- Funding: revenues from oil exploration
- Steering Committee: Govt., Civil society, Private Sector, Academia, BNDES & FBMC
- Budget (2013):
  - Investments (BNDES) – US\$500 million
  - Grants (MMA) - US\$ 15 mi/year

# Upcoming Challenges

- Updating National Plan (2013)
- Adaptation Strategy (2015)
- Funding & National Budget (2012-2015)
- Carbon Market (assessments/modelling/studies)
- REDD+
- R&D
- **Harmonization of Policies (18 State level policies in Brazil)**



# Brazil's Secretary for Climate Change

**smcq@mma.gov.br**