

National Transfer Accounts in Peru

Team:

Javier Olivera *javier.olivera@econ.kuleuven.be*
UNFPA-Office of Peru

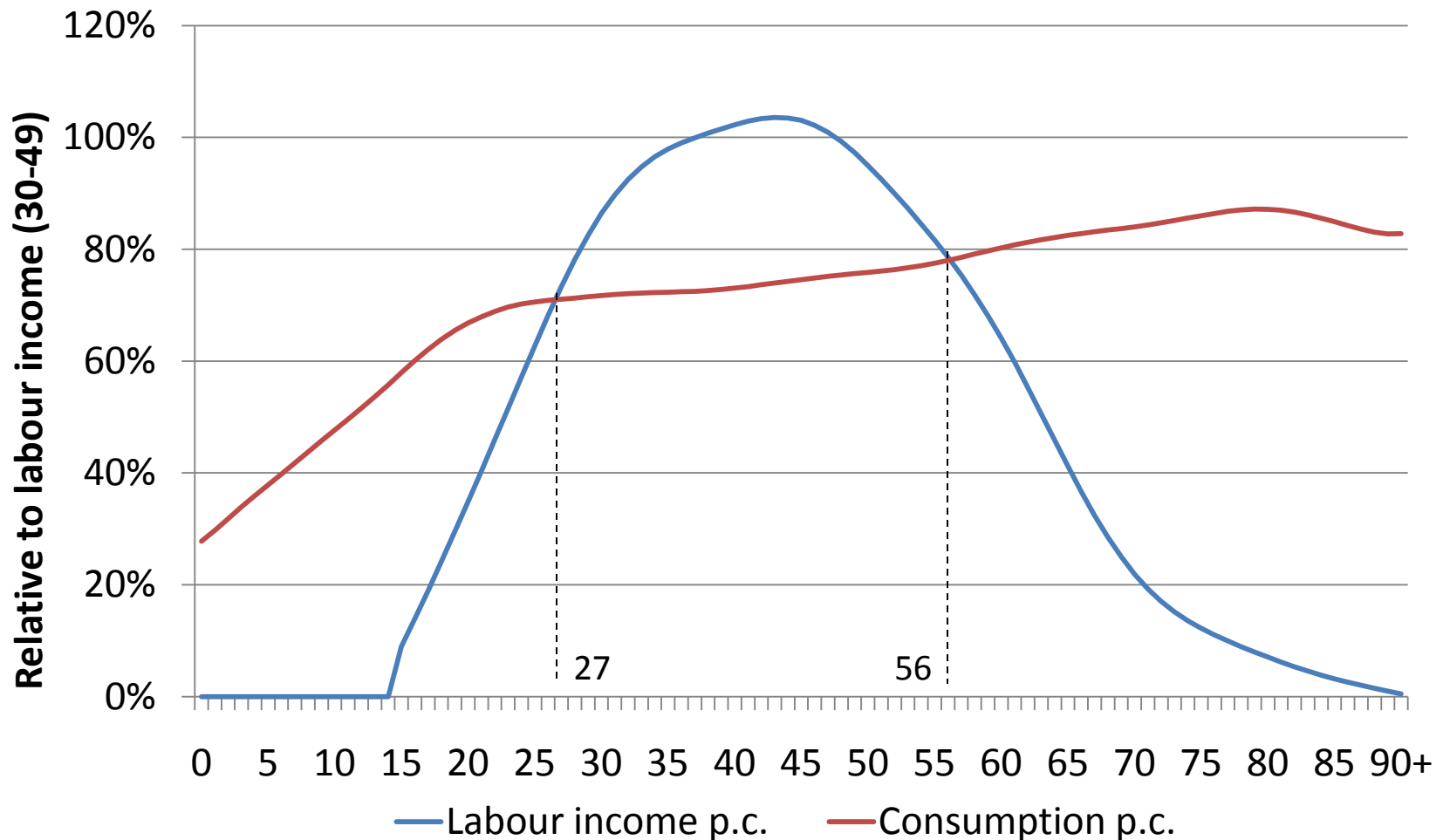
José Luis Robles *jose.robles@inei.gob.pe*
National Accounts Department (household accounts),
National Institute of Statistics (INEI)

Year: 2007

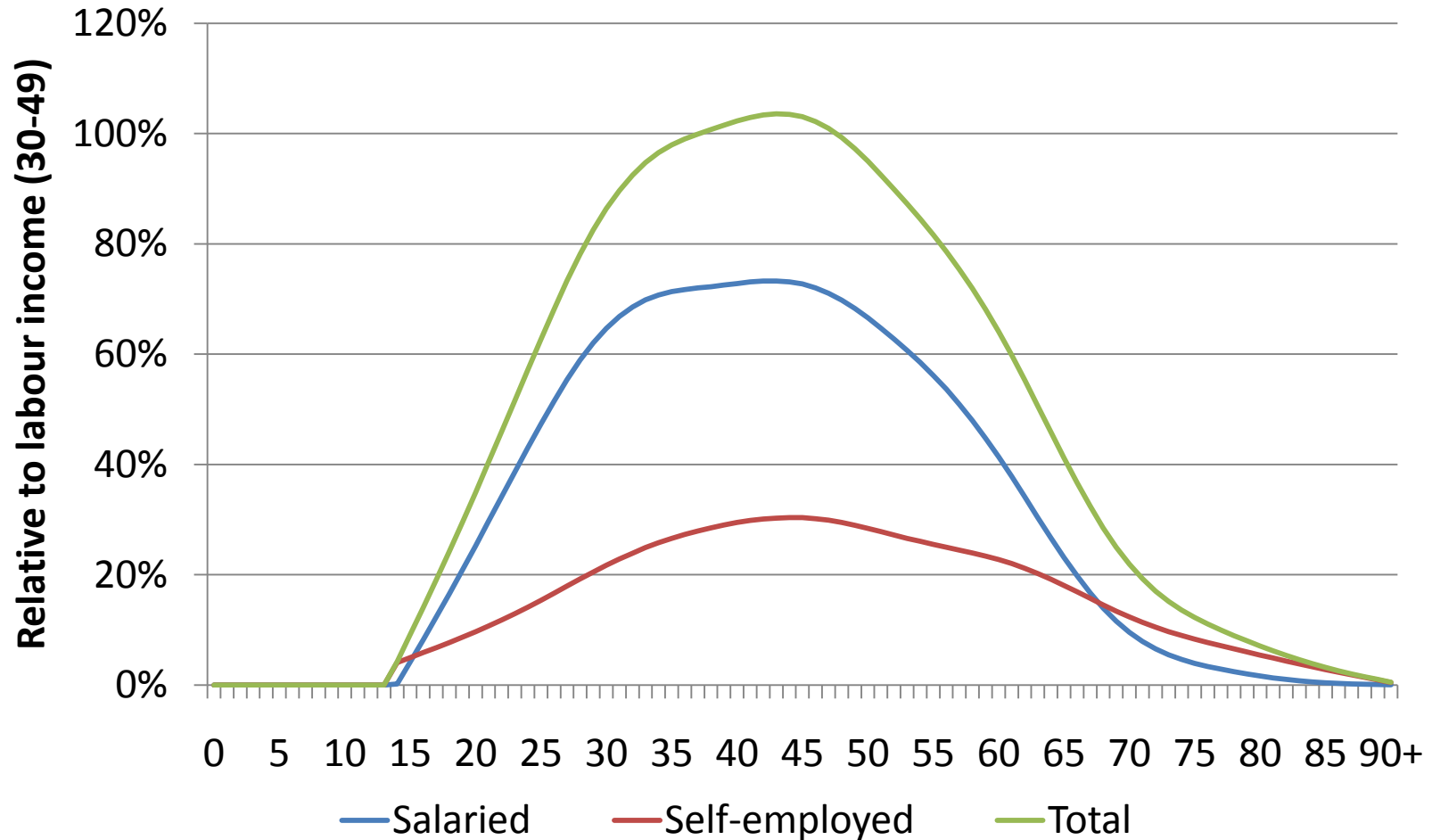
Main sources:

- Encuesta Nacional de Hogares.
Household survey with national and regional representation
- National accounts (base year: 2007)
- Public budget by programs and components

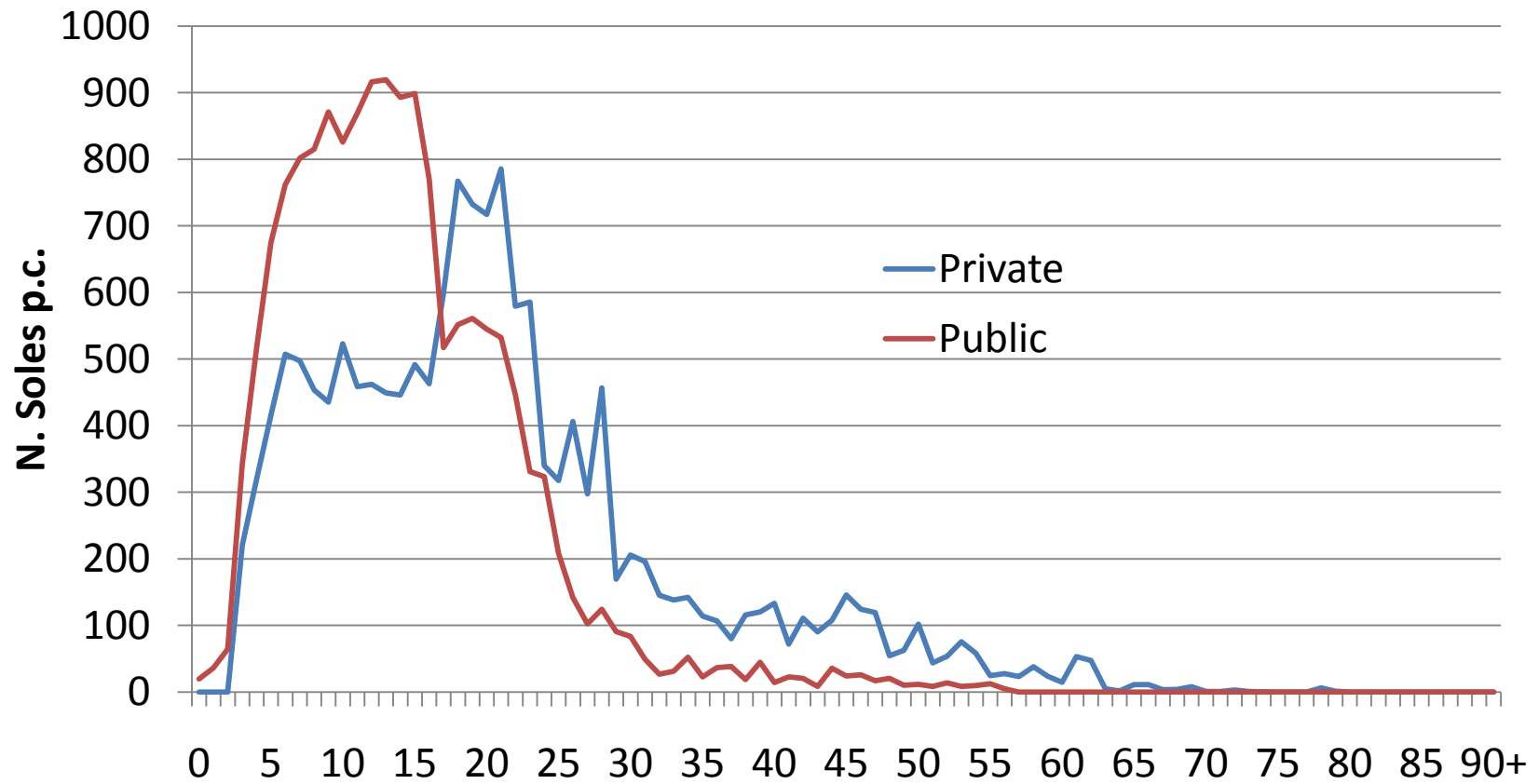
Peru 2007: Life cycle deficit



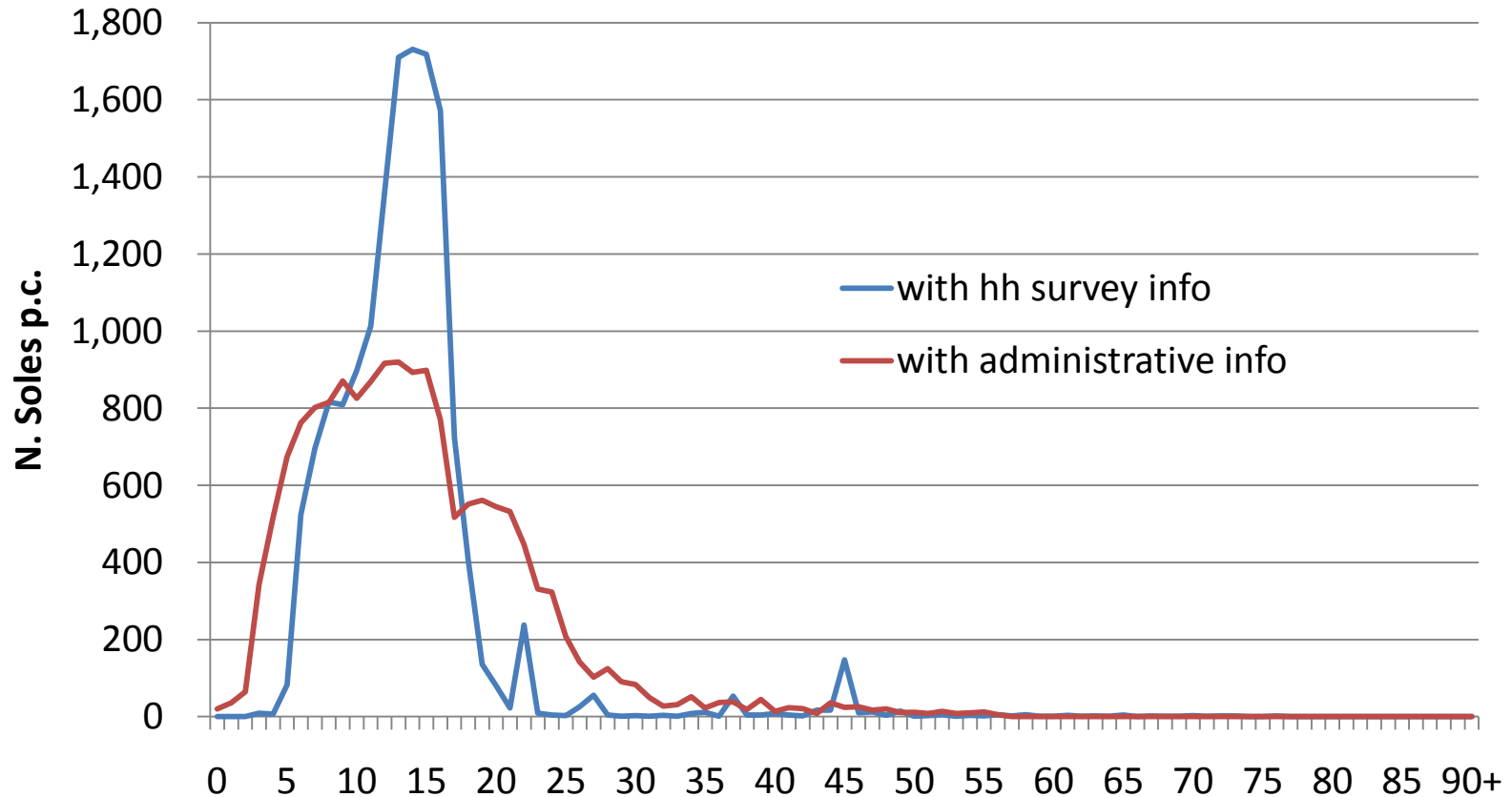
Peru 2007: Labour income



Peru 2007: consumption of education (Nuevos Soles per capita)



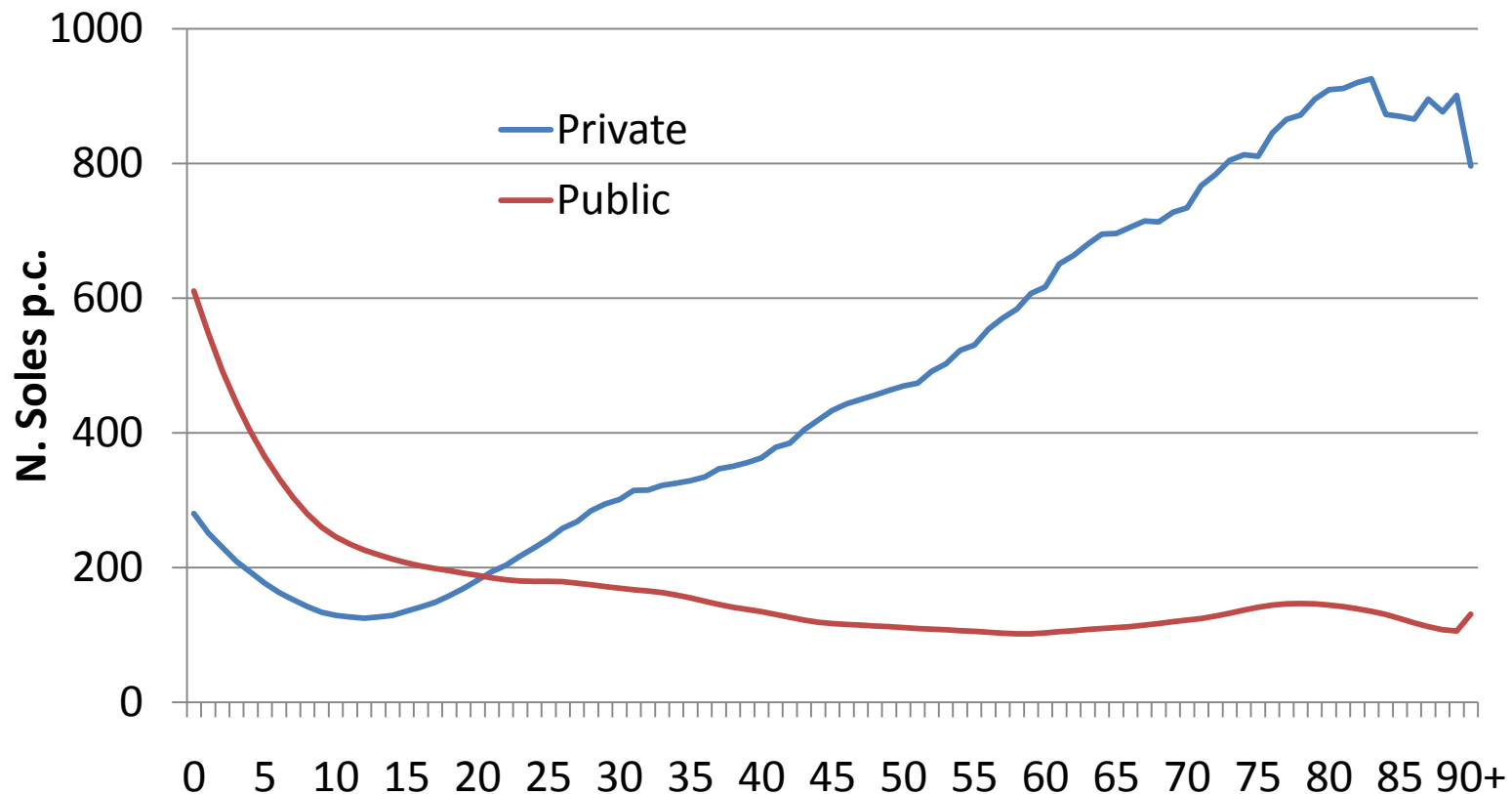
Peru 2007: consumption of public education (Nuevos Soles per capita)



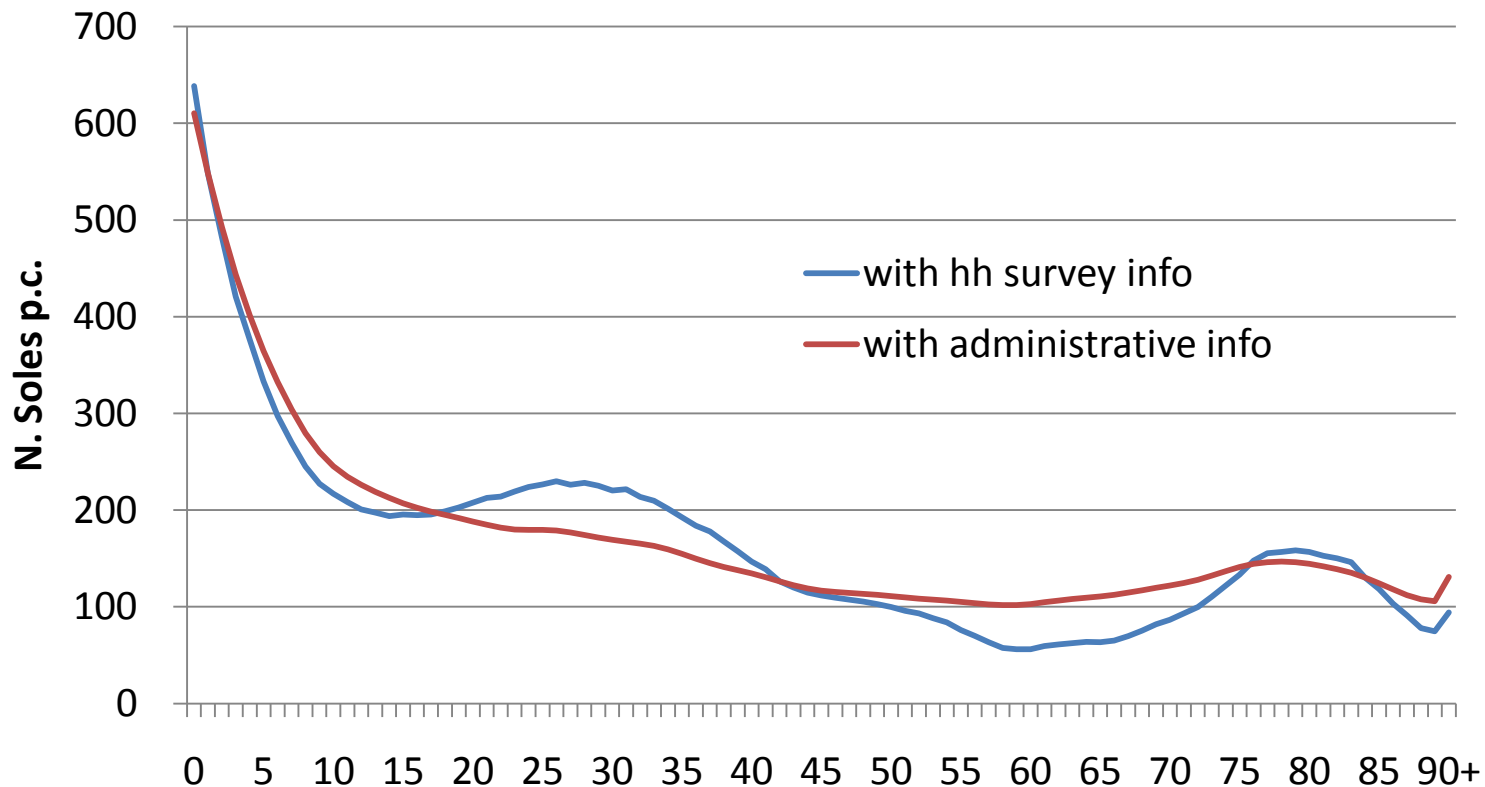
hh survey info: the household survey's respondents must value (in Soles) somehow the public education received

Adm. info: census of students and public expenditures disaggregated by educational program

Peru 2007: consumption of health (Nuevos Soles per capita)



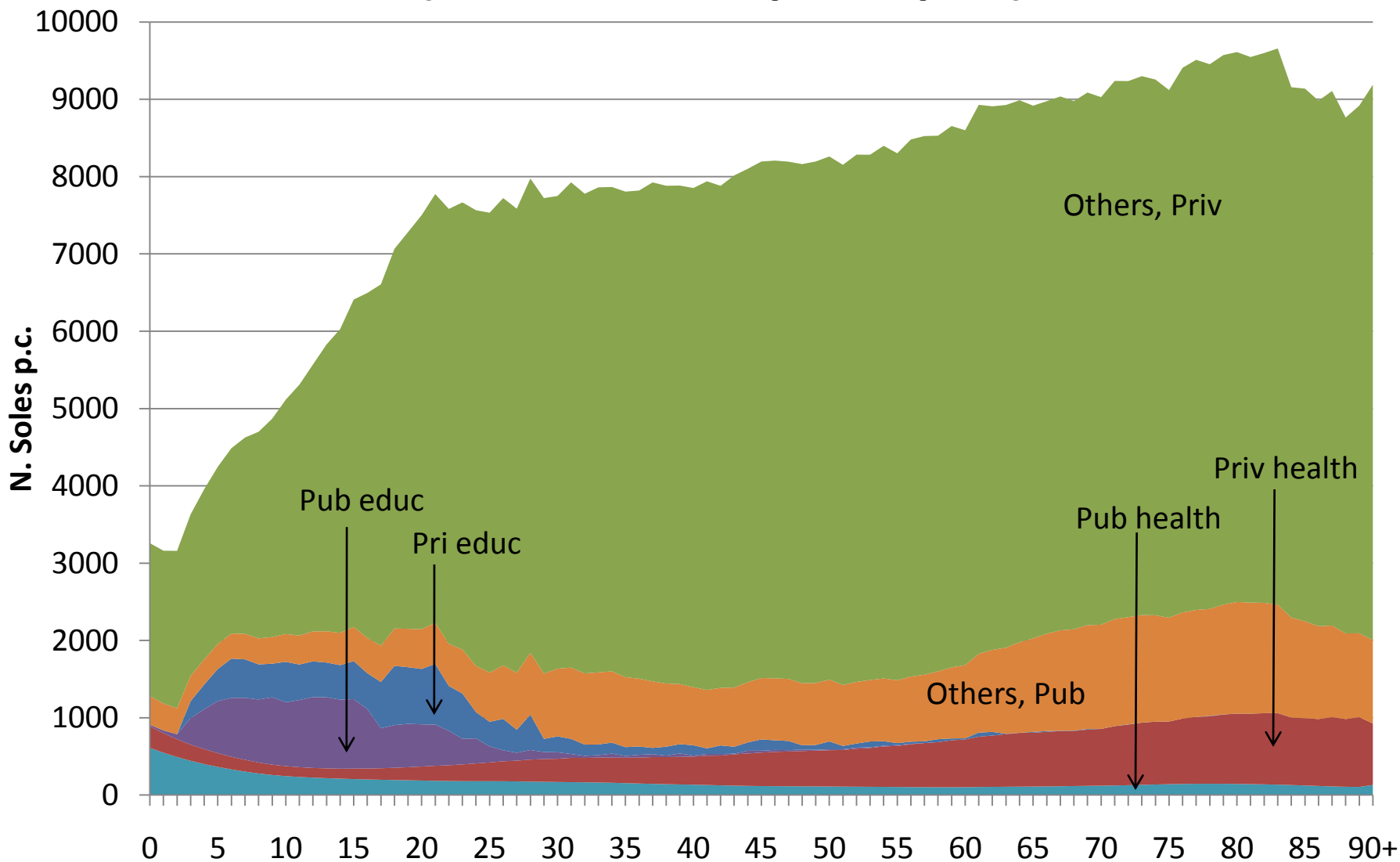
Peru 2007: consumption of public health (Nuevos Soles per capita)



hh survey info: the household survey's respondents must value (in Soles) somehow the public health received

Adm. info: public expenditures disaggregated by health program (age specific) and interventions, and distributions of interventions by age drawn from the hh survey

Peru 2007: total consumption (Nuevos Soles per capita)

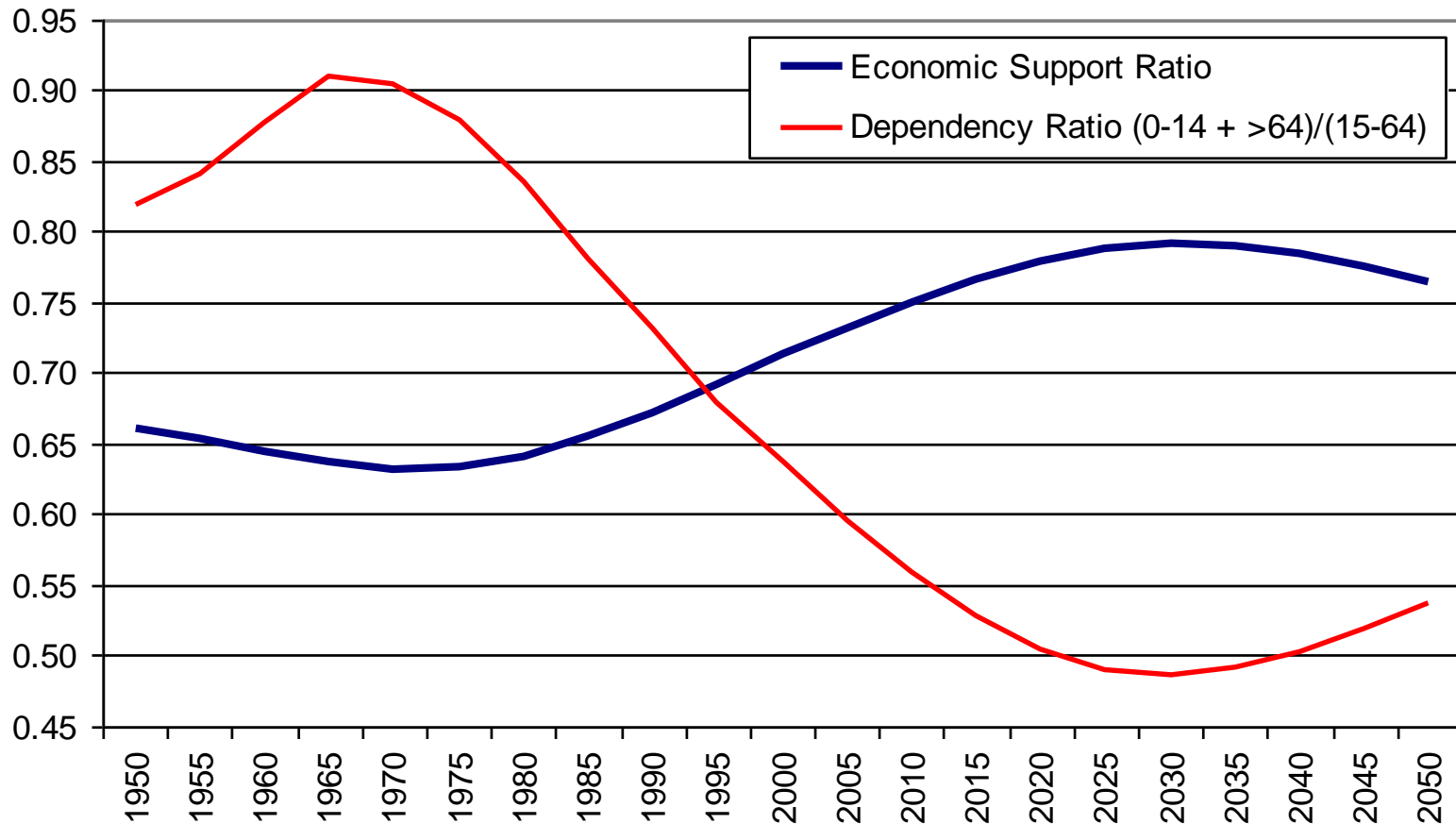


Public expenditures in health (thousands of Nuevos Soles)

Programa	Valor ajustado a Cuentas Nac.	
I. Salud colectiva y otros	1,775,536	
II. Salud individual	4,317,464	100.0%
<i>a. Gastos con algún componente etario:</i>		
Atención del niño menor de 5 años 1/	342,766	7.9%
Atención integral del niño	110,934	2.6%
Salud del niño y adolescente (5-17 años)	106,474	2.5%
Atención integral del adolescente 4/	119,265	2.8%
Atención integral del adulto 5/	130,018	3.0%
Atención al adulto en estado de pobreza 2/	49,219	1.1%
Atención integral del adulto mayor	29,012	0.7%
<i>b. Otros gastos:</i>		
Atención de consultas 3/	1,510,181	35.0%
Atención a gestantes, puérperas y del parto	213,195	4.9%
Hospitalización e intervenciones quirúrgicas /7	1,192,222	27.6%
Farmacia	279,130	6.5%
Diagnóstico y laboratorio 6/	229,973	5.3%
Atención odontológica	5,073	0.1%
Total	6,093,000	

Peru 2007: Economic Support ratio

(year base: 2007)



Work in progress:

Age reallocations (Asset-based reallocations, transfers)

Future research and tasks:

- NTA by regions
- NTA for year 1986 (there is a rich hh survey in that year)
- Estimation of the value of work of hh members with a new survey (*Encuesta del uso del tiempo*) on the intra-household allocation of resources