

# NATIONAL TRANSFER ACCOUNT- COLOMBIA

*Jorge Tovar-Department of Economics, Universidad  
de los Andes*

*B. Piedad Urdinola- Department of Statistics,  
Universidad Nacional de Colombia*



# Data

- Microdata: 2008-Living Standards National Survey (Encuesta Nacional de Calidad de Vida), carried out by DANE (National Office of Statistics)
- Macroeconomic data: System of National Accounts (DANE); GFS accounts from International Monetary Fund (IMF); Balance of Payments, Financial and price data from Colombian Central Bank (Banco de la Republica); Central Government Income and Expenditure Balance, Expenses per program and Public Finances from Ministry of Finances and Ministry of Health (Ministerio de la Protección Social).

# Data

Switch from Income-Expenses Survey (IES) to Living Standards National Survey (LSNS) because:

- The former did not include all provinces (departamentos) in Colombia
- Nearly 13,600 households, representative at national; urban/rural and per region
- Response rates are much higher in several interest variables (i.e. Taxes paid)
- Includes questions on health utilization for in and out-patient data

# Data

- Does not include bequest data
- Respondents who were classified as inactive, but received a payment from any kind of work, were re-classified as occupied
- Colombia has a differentiated consumer's tax rate that was applied to the different products
- Yet, other studies show that people consume half of their products from stores that do not pay or evade taxes. We followed that 50%-50% rule in our

# Data

- One household was deleted from the sample for being a very extreme outlier on the consumption of ALL questions
- Another household was not taken into account for the health consumption profiles, for being a very extreme outlier on those items
- Consumption of “adults” is calculated separately with their differentiated VAT rates

# NTA-Profiles

- Our work includes the profiles derived from the microdata and the data arranged at the Aggregate Controls excel file
- Still, there are some macroeconomic indicators that we are building up, particularly Health Public programs information is not completed yet, as we would prefer to have a “clue” on the age profiles per program (i.e. maternity )
- Smoothing follows the NTA proposed *Supsmu* method from “R”

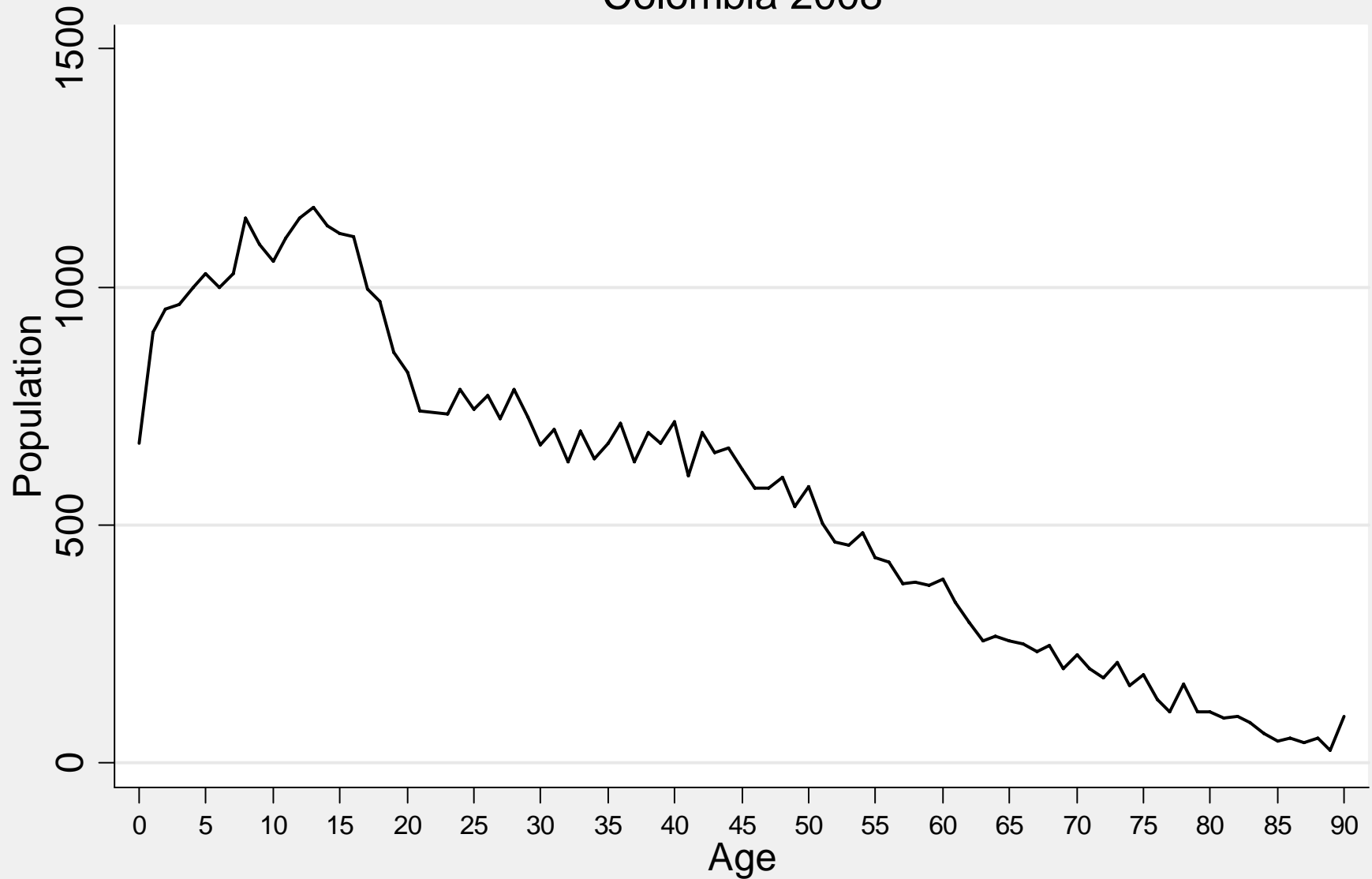
# NTA-Profiles

- The public education profile follows the Colombian census age-distribution, while we get better data on enrollment by age.
- The method used to estimate health profiles was direct in most cases. There is only a handful of questions we had to “age-profile” and we did it using the iterative method
- For all graphs, prices reflect monthly Colombian pesos (COP)



# Population Age Structure

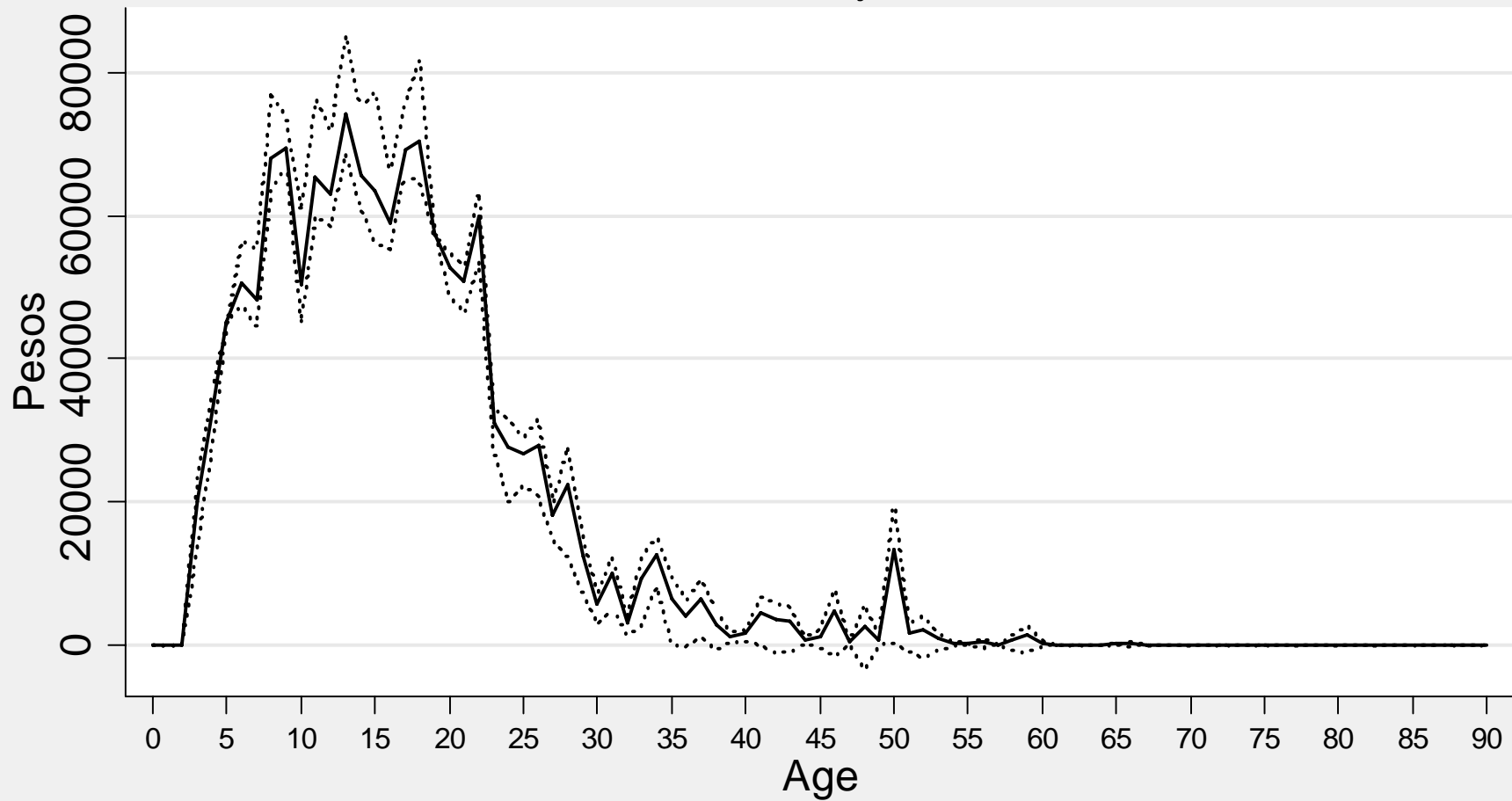
## Colombia 2008



Source: Living Standards Survey

# Per Capita Private Consumption Education

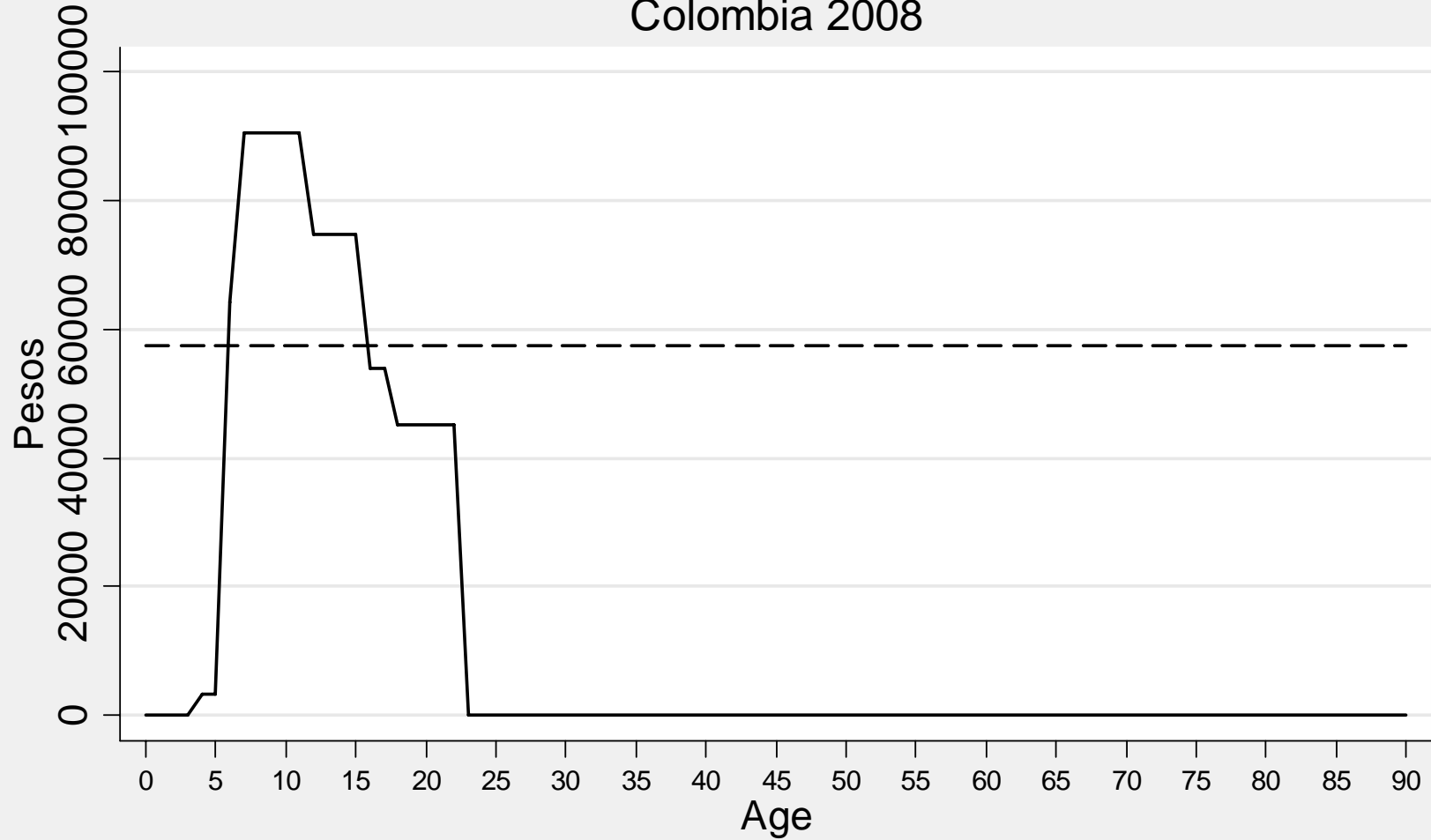
Colombia 2008  
Macro Adjusted



— Age Profile      ..... 95% Confidence Interval

Source: Living Standards Survey

# Per Capita Public Consumption Colombia 2008

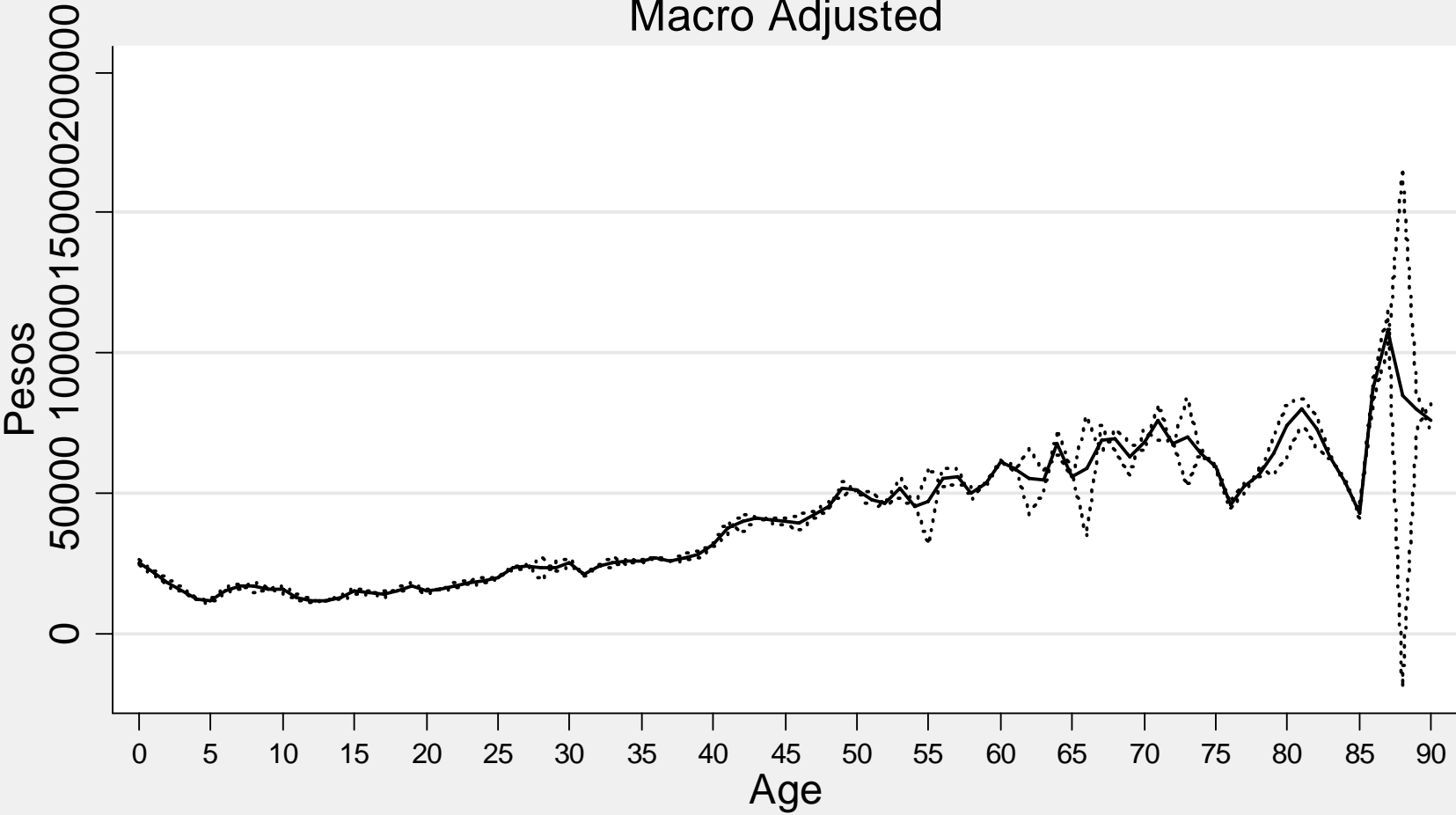


— Education    - - - - Others

Source: Administrative Records

# Health Private Consumption Age Profile

Colombia 2008  
Macro Adjusted

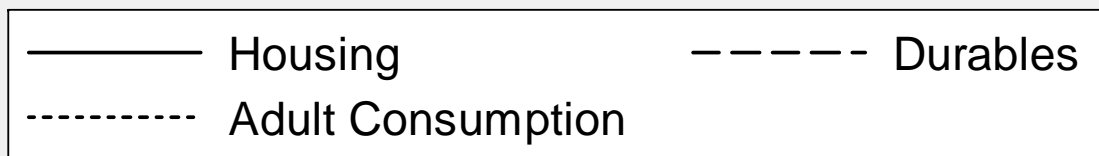
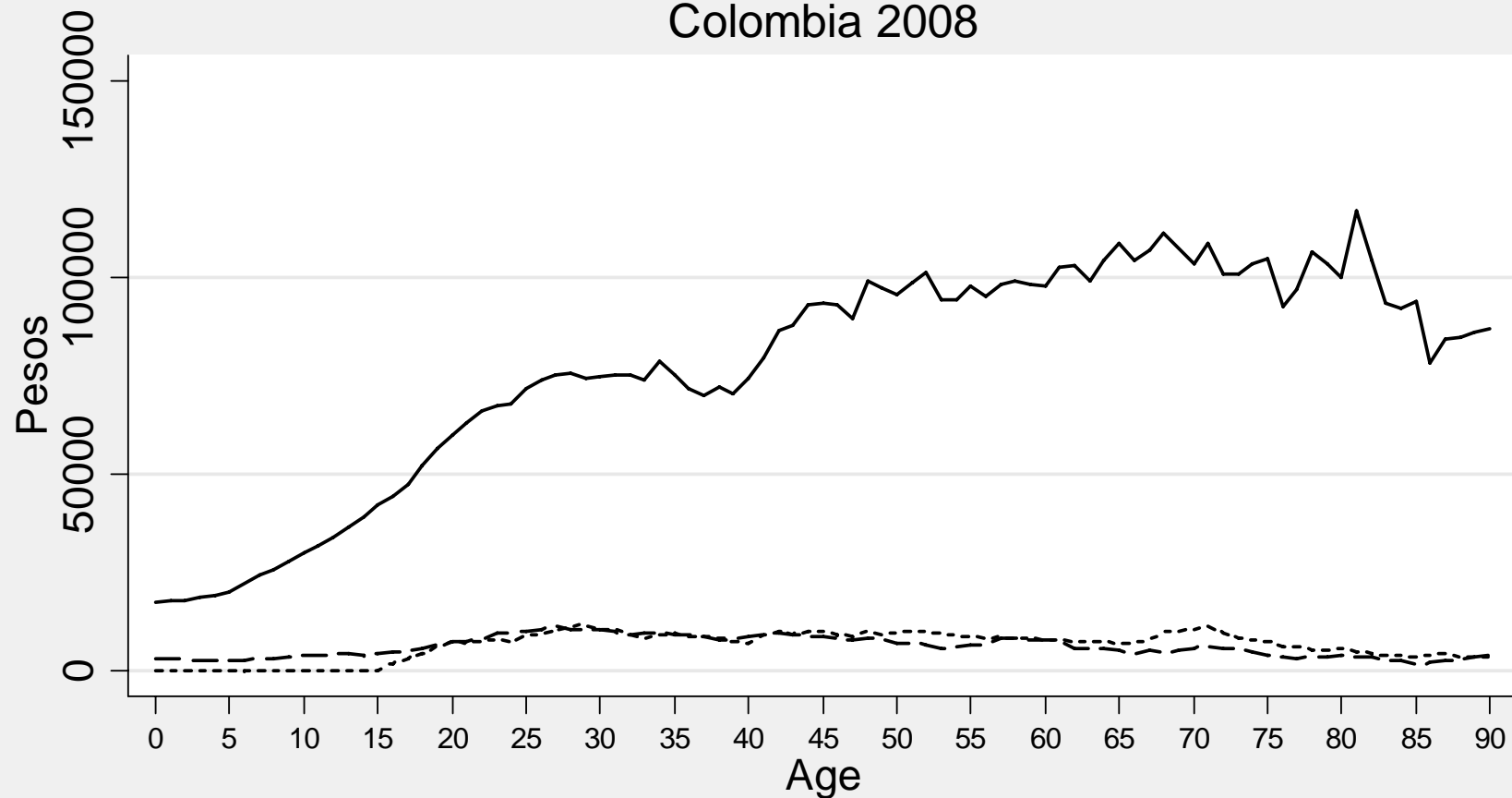


— Age Profile      ..... 95% Confidence Interval

Source: Living Standards Survey

# Per Capita Other Private Consumption Age Profile

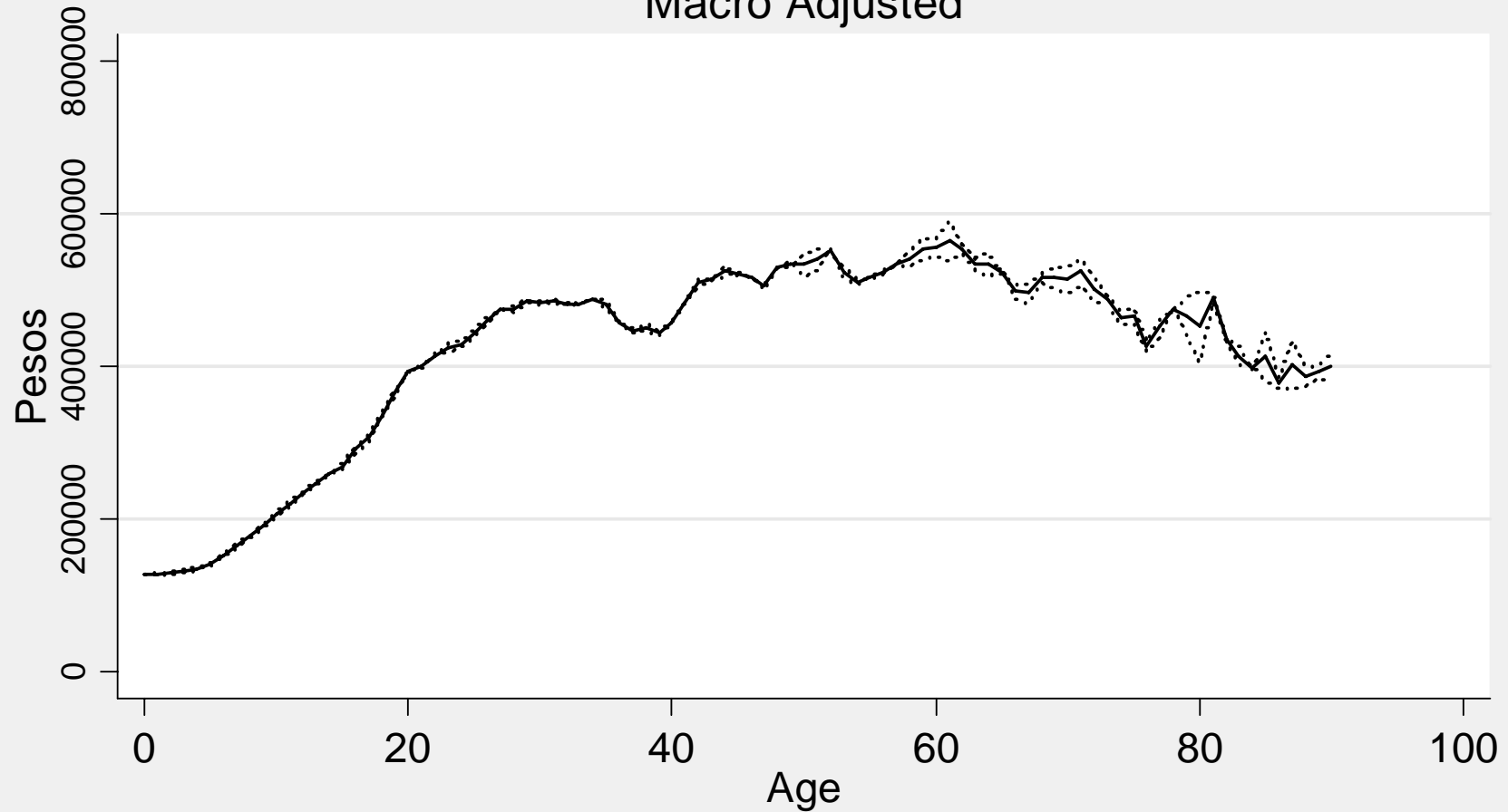
## Colombia 2008



Source: Living Standards Survey  
Not Macro Adjusted

# Per Capita Other Private Consumption Age Profile

Colombia 2008  
Macro Adjusted



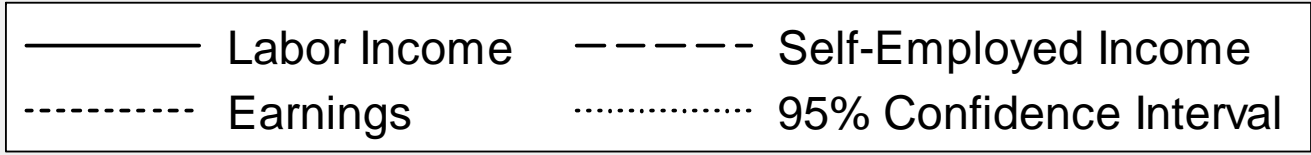
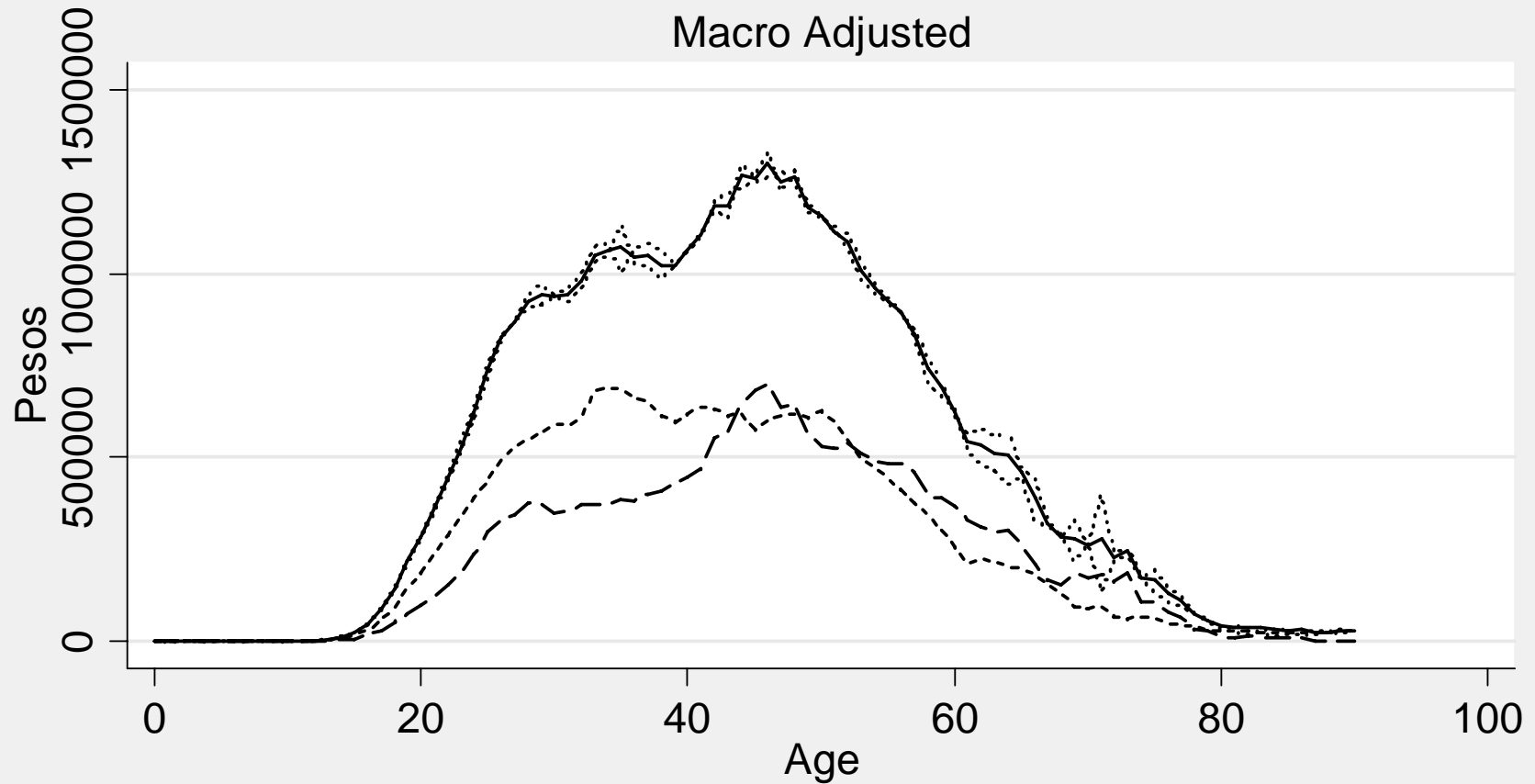
— Total Other      ..... 95% Confidence Interval

Source: Living Standards Survey

# Labor Income Composition

Colombia 2008

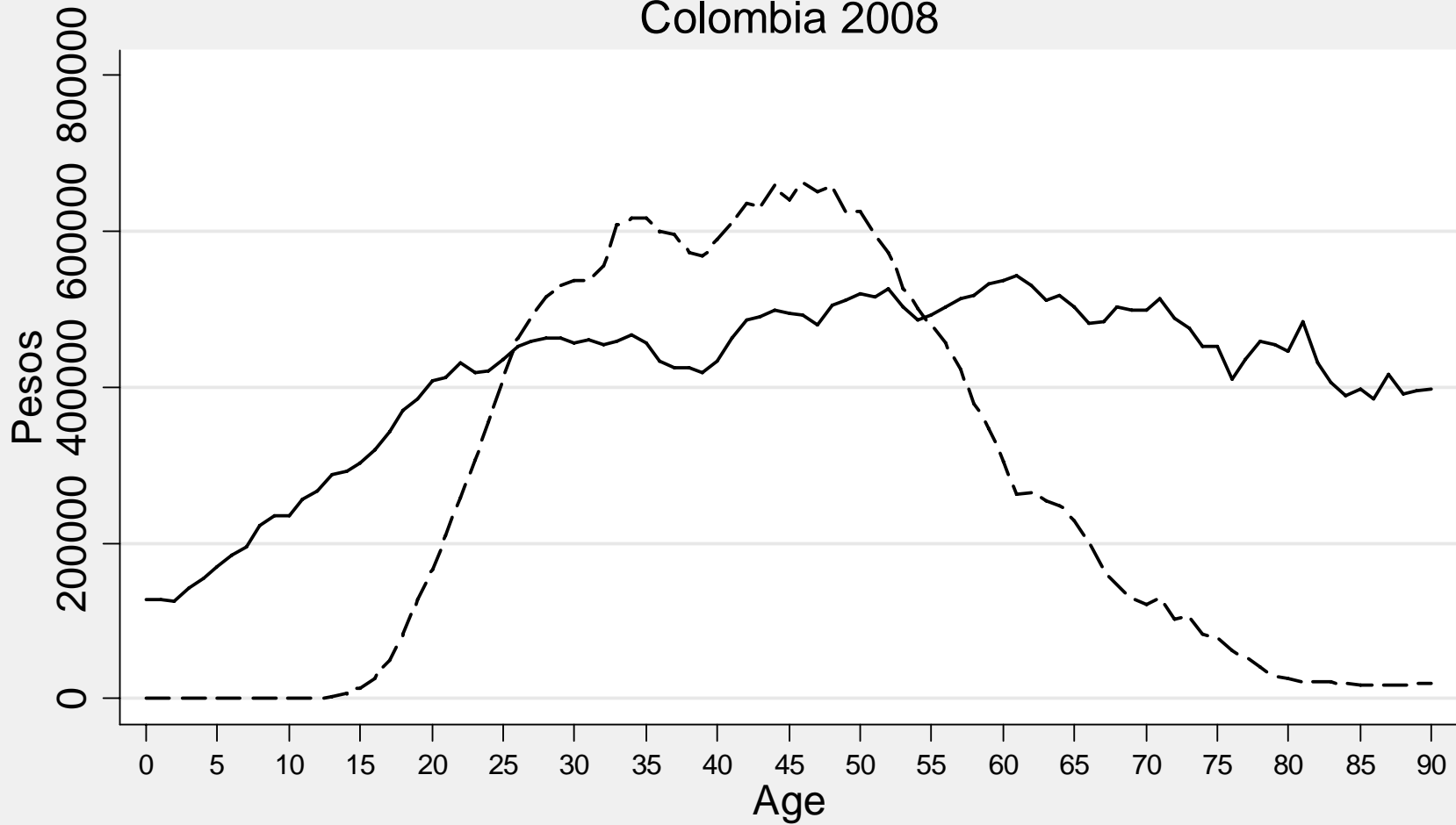
Macro Adjusted



Source: Living Standards Survey

# Consumption and Labor Income Age Profile

Colombia 2008



— Consumption    - - - - Labor Income

Source: Living Standards Survey  
Not Macro Adjusted

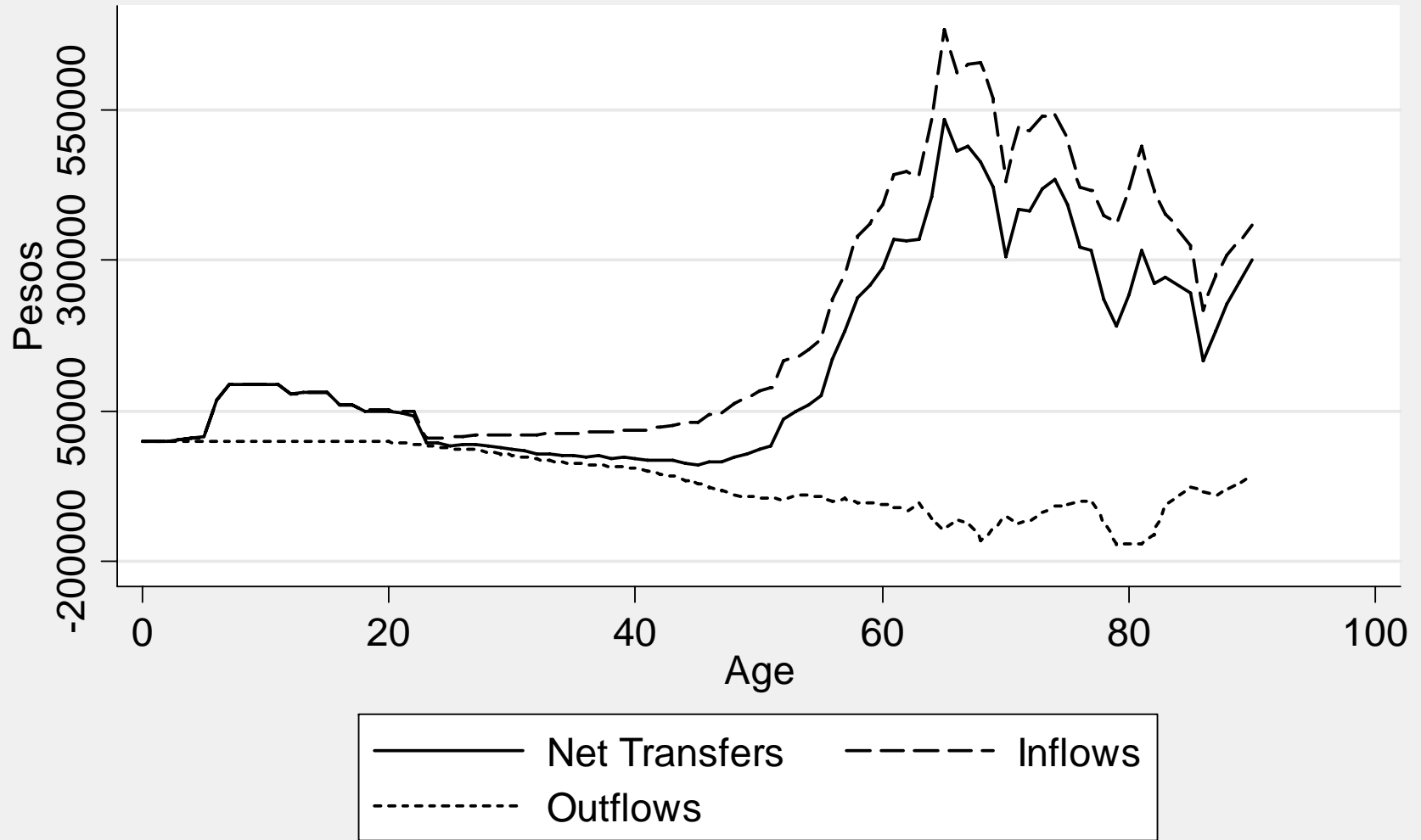


# Transfers

- All public, private, inter and intrahousehold transfers are preliminary
- So far, we included our advances from the survey-only work
- We brought more questions than answers in this profiles (wannabe)

# Public Transfer

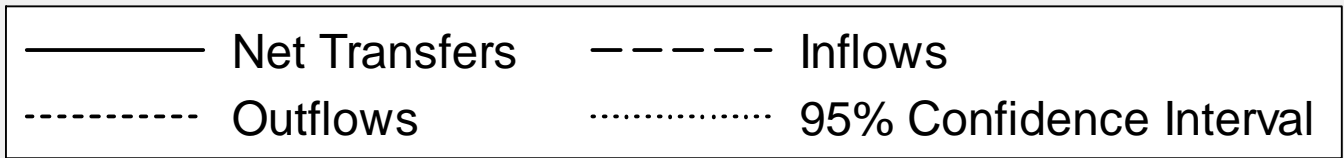
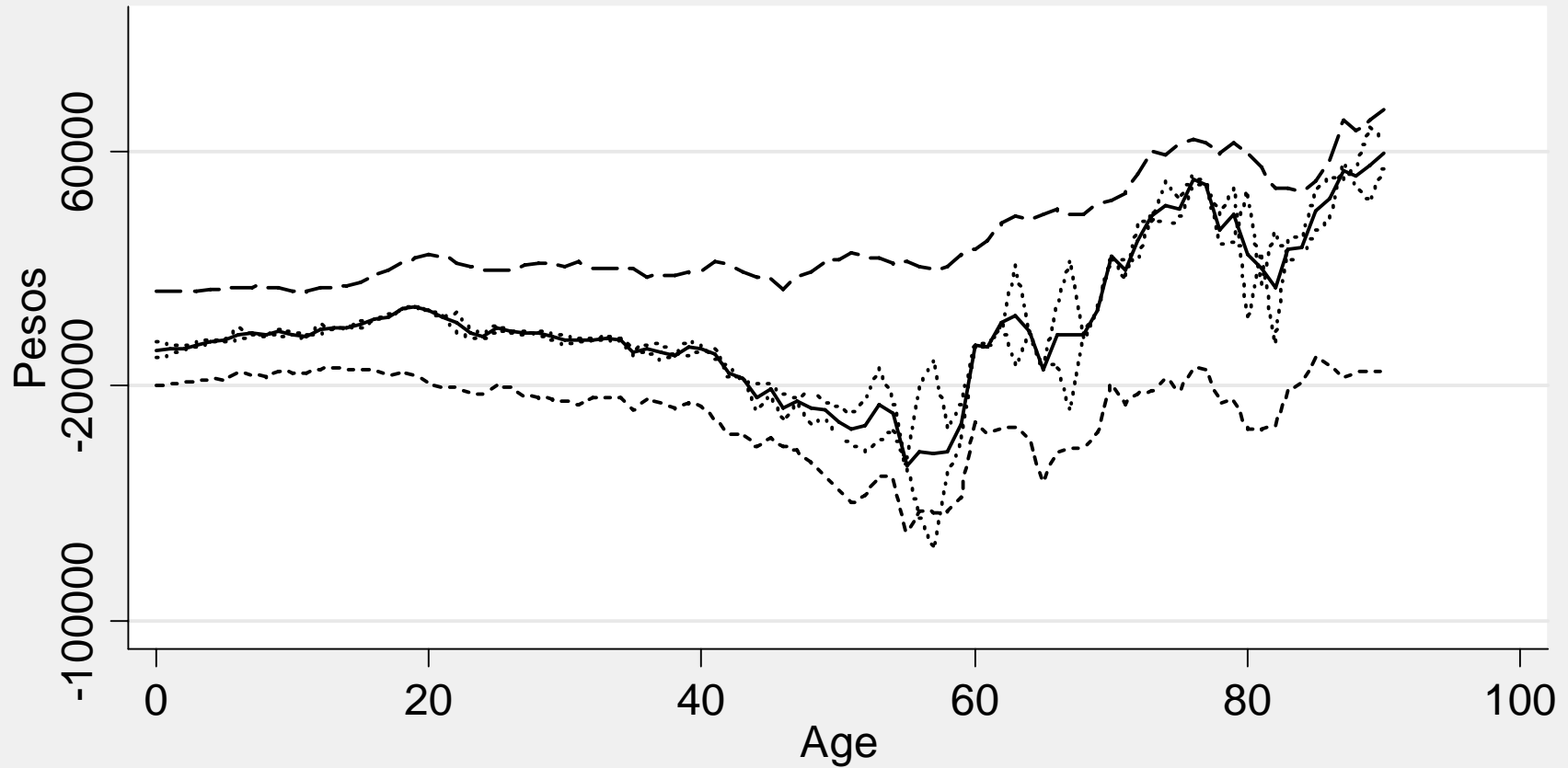
## Colombia 2008



Source: Living Standards Survey  
Not Macro Adjusted

# Private Inter Transfer Composition

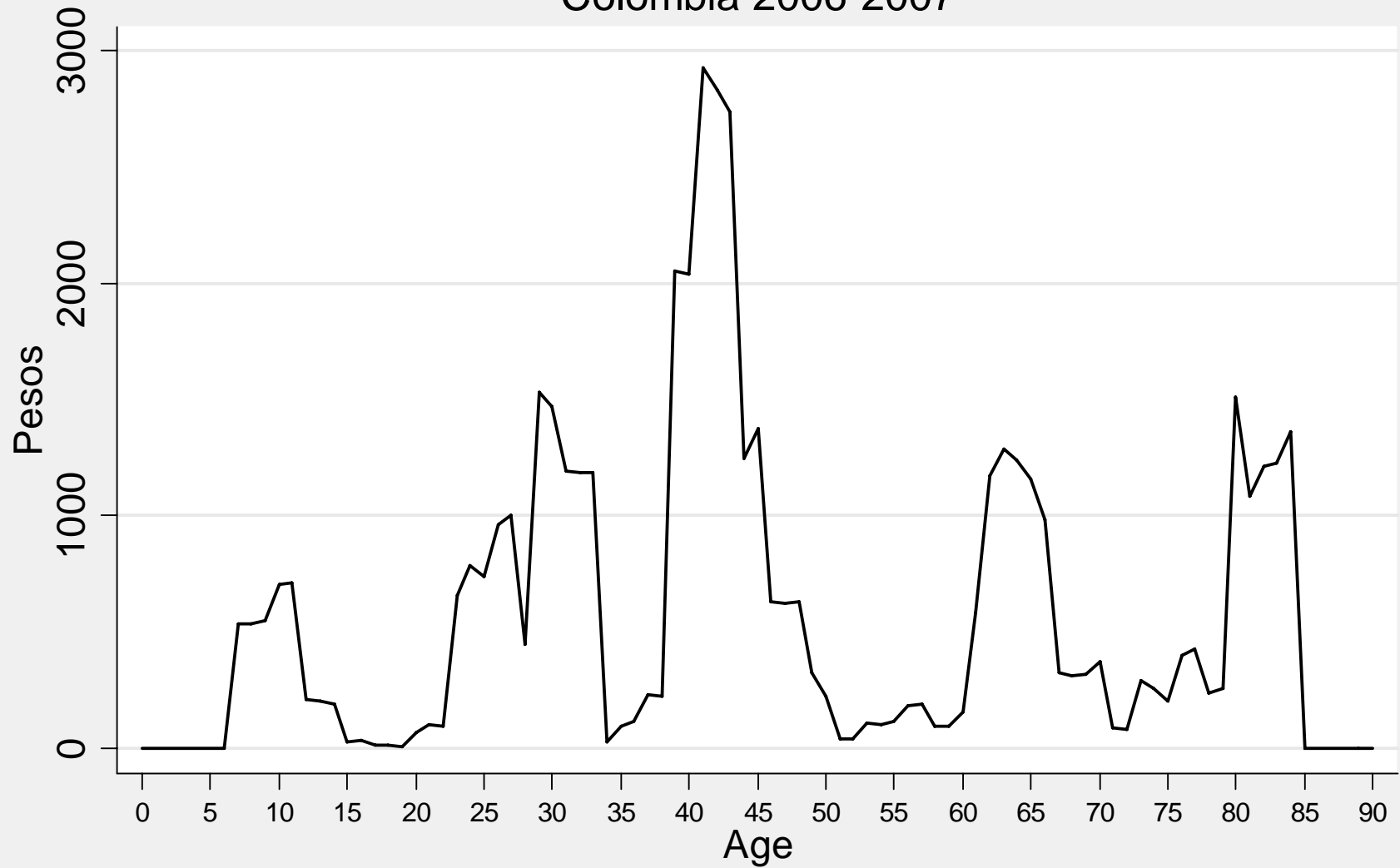
## Colombia 2008



Source: Living Standards Survey  
Not Macro Adjusted

# Bequest Profile

Colombia 2006-2007



Source: Living Standards Survey  
Not Macro Adjusted

# What's next?

- Solve the many questions we have in our bags to properly finish NTA profiles
- 2040 Forecast
- Profiles and Forecasts with “a twist”:
  1. Over-male mortality, relevant for the Colombian case and maybe interesting for other Latin American countries
  2. Accounting the large informal sector for both pensions and labor market: scenarios if formalization increases at  $x\%$  or if it becomes mandatory (i.e. *Brazilian style*)