

# Introduction to Gender Statistics

Workshop on Gender Statistics and Analysis  
Providenciales, Turks and Caicos Islands

16-19 February 2026



UNITED NATIONS

ECLAC

UNITED NATIONS ECONOMIC COMMISSION FOR LATIN AMERICA AND THE CARIBBEAN, SUBREGIONAL HEADQUARTERS FOR THE CARIBBEAN

# 1

## Learning objectives

- Become familiar with the concepts of sex and gender
- Understand the multidisciplinary nature of gender statistics.
- Gain knowledge on how gender statistics can help monitor the SDGs from a gender angle, in the spirit of inclusiveness.
- Understand the reasons behind the lack of some gender-related SDG data, and potential solutions to overcome related challenges.

# WHAT IS GENDER DATA

## Sex vs. Gender

Sex vs. Gender	
Sex	Sex refers to the biological differences between women and men
Gender	Gender refers to the role of a woman or man in society, it is constructed over time

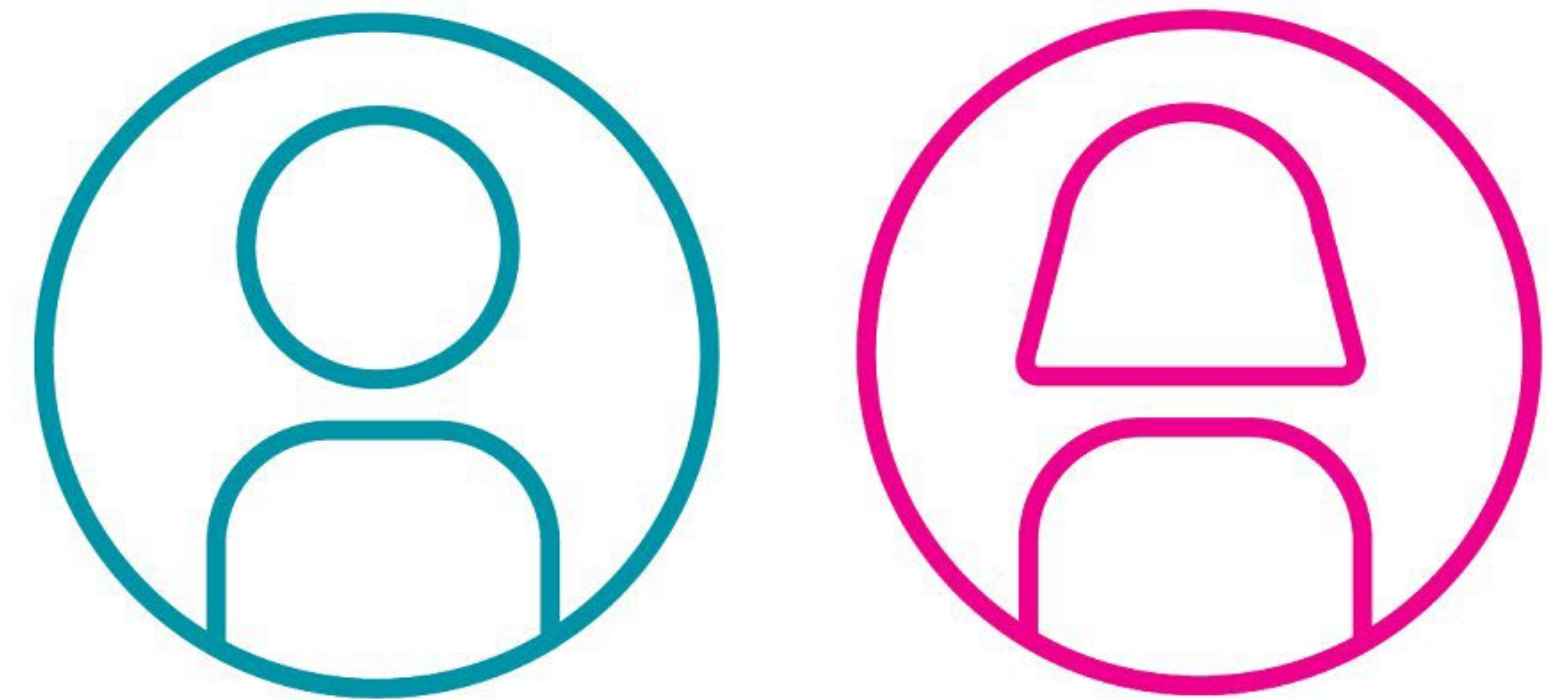
- Generally, data is disaggregated by sex
- Sex-disaggregated statistics are part of gender statistics, but gender statistics are much broader

## SEX OR GENDER?

- 1) AFTER DELIVERY THE DOCTOR WILL REVEAL TO THE MOTHER THE Sex OF THE CHILD
- 2) IN ORDER TO UNDERSTAND THE DIFFERENCES IN ENROLMENT RATES BETWEEN GIRLS AND BOYS, THE DATA MUST BE DISAGGREGATED BY Sex
- 3) A PERSON'S Sex MIGHT OR MIGHT NOT ALIGN WITH HIS OR HER Gender IDENTITY
- 4) DATA IS TYPICALLY DISAGGREGATED BY BINARY DEFINITIONS OF Sex, BUT SOME COUNTRIES ARE STARTING TO DEVELOP METHODOLOGIES TO CAPTURE Gender DIMENSIONS AND APPLY THESE FOR DISAGGREGATION
- 5) WOMEN AND MEN'S Gender ROLES IN SOCIETY DETERMINE HOW MUCH TIME THEY SPEND DOING DOMESTIC WORK
- 6) Gender STATISTICS INCLUDE Sex DISAGGREGATED STATISTICS AND OTHER Gender SPECIFIC INDICATORS THAT CAPTURE THE REALITIES AND THE DIFFERENCES IN THE LIVES OF WOMEN AND MEN

# GENDER STATISTICS

- Gender Statistics capture the specific realities in the lives of women and men
- Gender statistics go well beyond sex-disaggregation
- Gender statistics comprise:
  - Sex-disaggregated data
  - Data pertaining specifically to women or to men
  - Data that captures specific gender issues (even when non explicit)
- Gender data cuts across all areas of sustainable development



## ARE THESE GENDER STATISTICS?

Proportion of population living in slums, by sex ✓

Maternal mortality ratios, per 100,000 live births ✓

Incidence of prostate cancer ✓

Tobacco use rates in China ✓

Proportion of households using clean fuels for cooking and heating ✓

Total value of inward and outward illicit financial flows, in USD ✗



## 3.3

# Misinterpretation issues specific to gender data

## Interviewing only the household head to obtain data

- Data disaggregation by sex of household head can never replace sex-disaggregated data
- Why?
  - Males might not have accurate information about women
  - Biased information about violence against women, control issues, etc.
  - Fails to capture intra-household inequalities
  - Bias regarding household composition (e.g. most women-headed households are single adult households; most male-headed households are not)
- Questions about women must be asked to women

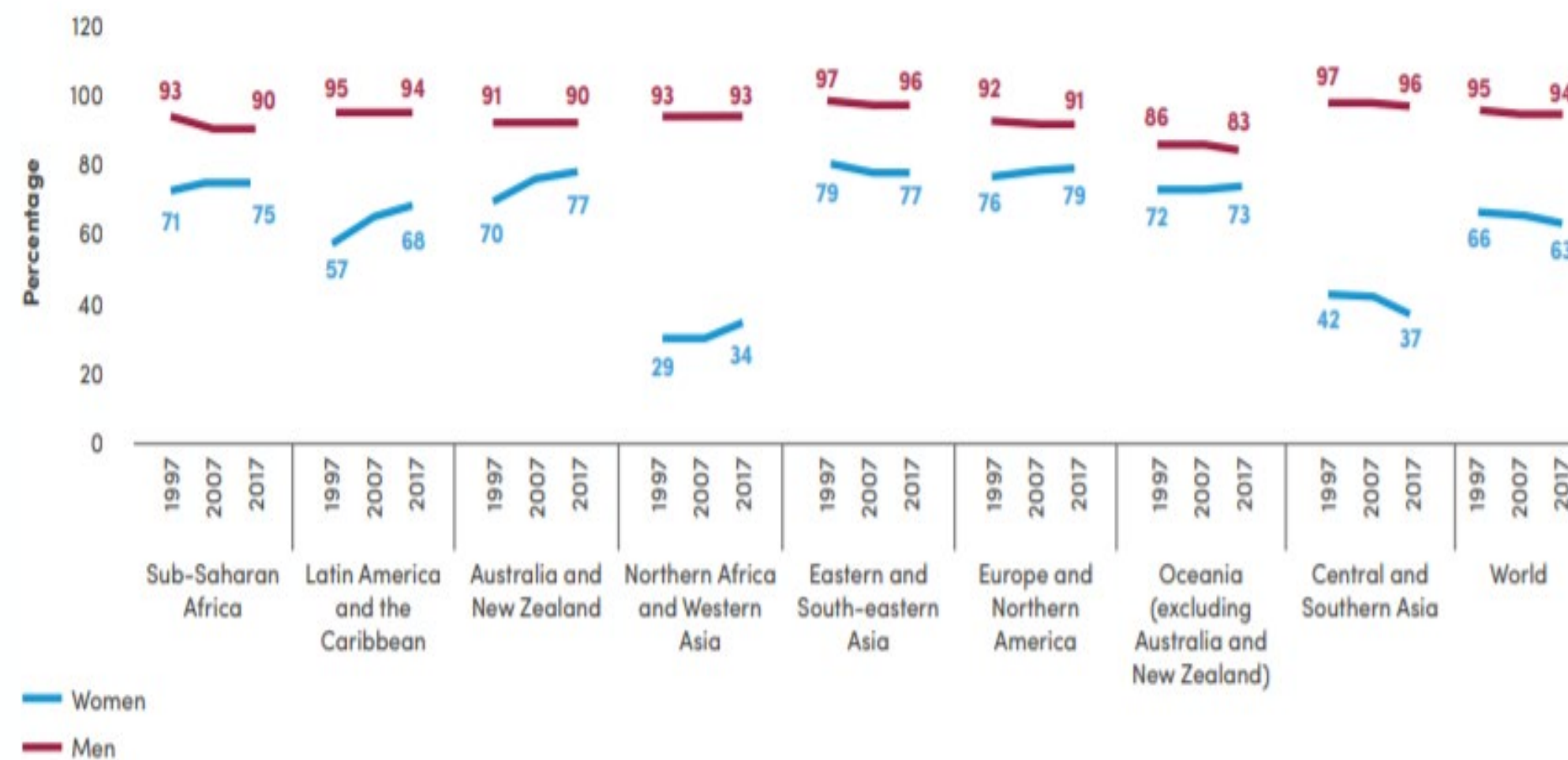


Graphic credit: Delwar Hossain

# Measuring gender gaps

- Measuring gaps is important to provide a picture of equality
- The trend of gaps may differ from the overall trend of an indicator
- For example, observe the data for women and men in Eastern and South-eastern Asia

Labour force participation rate among population aged 25-54 by sex and region, 1997-2017



Source: Weighted averages calculated by UN Women using data from ILO 2017b.  
Note: Data refer to latest available in reference period for 193 countries.

- o Hence, there is a need to look at individual indicator values for women and men, and not just the gap

## Violence and crime data

- Violence and crime estimates are ALWAYS UNDERREPORTED
- Most victims do not report instances to the police because:
  - Victims fear for their own safety
  - Victims believe reporting won't lead to results
  - Stigma associated with violence
- Surveys are a better instrument to capture this data because:
  - Victims are more likely to disclose incidents when asked (as opposed to going to the police)
  - Enumerators are specifically trained to build rapport with victims
  - Trained enumerators are more sensitive to confidentiality issues
  - Enumerators are aware of the psychological harm while recalling violent instances
  - Women are interviewed separately
  - Question order and wording are carefully crafted in specialized surveys



Graphic credit: Siwat V.

# Time Use Data

- Quantitative summaries of how individuals “spend” their time (over 24h or 7 days)
- Key issues when interpreting time-use data are:
  - o Information collected over different days (weekdays vs. weekends) and over different seasons
  - o Refer to ICATUS to understand classification of activities
  - o Unpaid care and domestic work only includes work for own-use and in the form of services
- Time-use information is best measured using diaries:
  - o Capture simultaneous activities

Activity categories	04:00-05:00				05:00-06:00				06:00-07:00				07:00-08:00			
Sleeping																
Eating																
Personal care																
School																
Work as employed																
Own business work																
Farming																
Animal-rearing																
Fishing																
Shopping																
Weaving, sewing																
Cooking																
Domestic work																
Care for children																
Commuting																

## Sex disaggregated poverty rates

- Poverty rates are typically calculated at the household level and:
  - Fail to capture intra-household inequalities
  - To capture accurate measures of individual allocation of resources, separate assessments of income and/or expenditure at the individual level are necessary
- Check indicator metadata to assess whether the data pertains to household-level or individual-level estimates



Image credit: Flaticon

## Gender pay gap

- Mean hourly earnings from paid employment by sex
- Pay by occupation and level and taking into consideration total time worked
- Interpreting this indicator:
  - Pay gap DOES NOT JUST reflect the average pay of women vs. the average pay of men in a certain country
  - Compares earnings for a certain occupation and level
  - Gross remuneration in cash or in-kind for time worked or work done, (includes remuneration for annual vacation, other type of paid leave)
  - Excludes employers' contributions to social security, pension and related benefits
  - Excludes severance and termination pay.

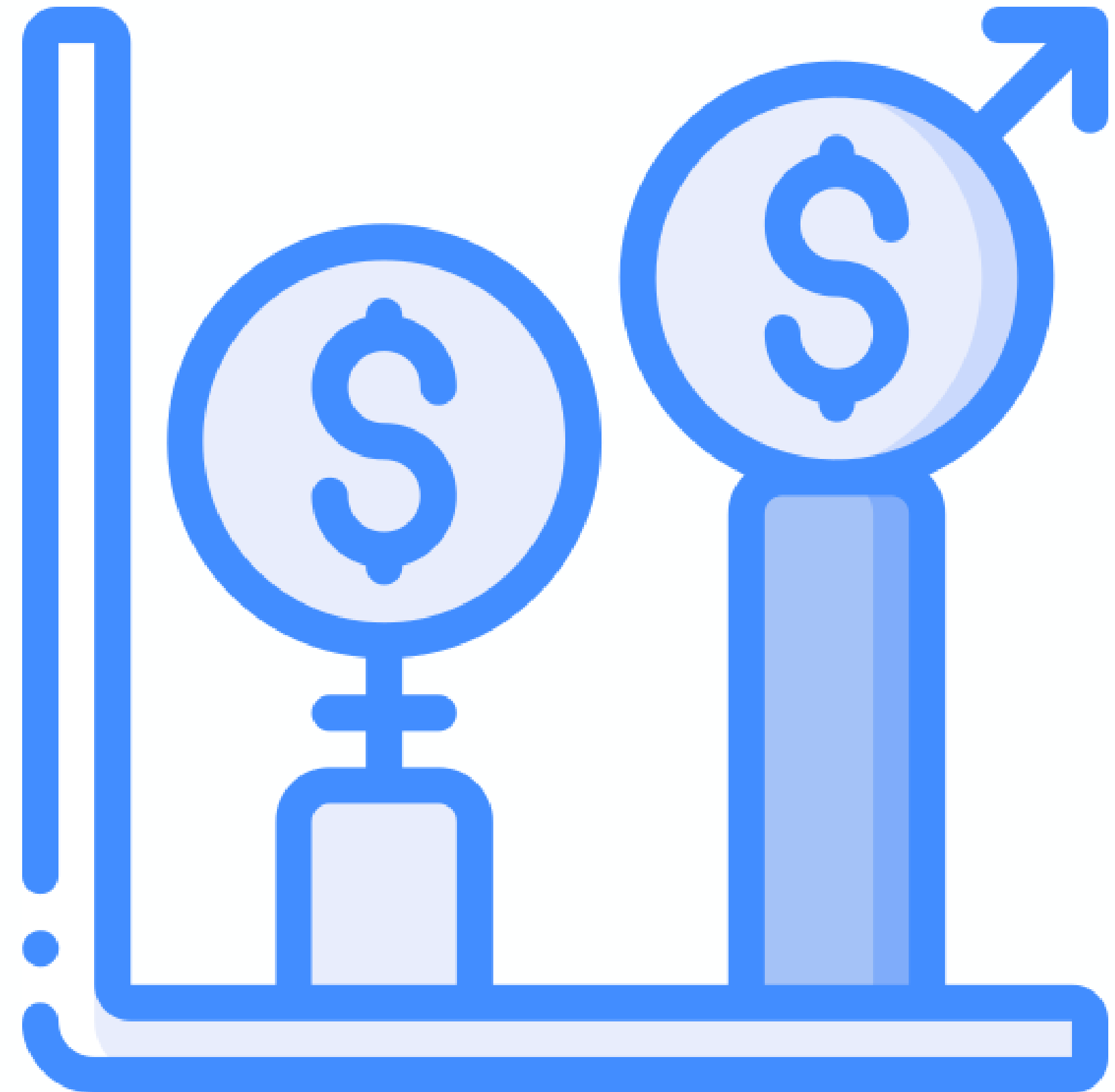


Image credit: Flaticon

# GENDER AND THE SUSTAINABLE DEVELOPMENT GOALS (SDG)

The 2030 Agenda for Sustainable Development:

- Adopted by all UN Member States in 2015
- Provides a shared blueprint for peace & prosperity for people and the planet.
- At its heart are the 17 Sustainable Development Goals (SDGs)
- Each of the 17 Goals include a series of targets
- To measure progress towards the targets we use more than 200 indicators
- The SDGs are a follow-up to the MDGs, but apply for developed and developing countries



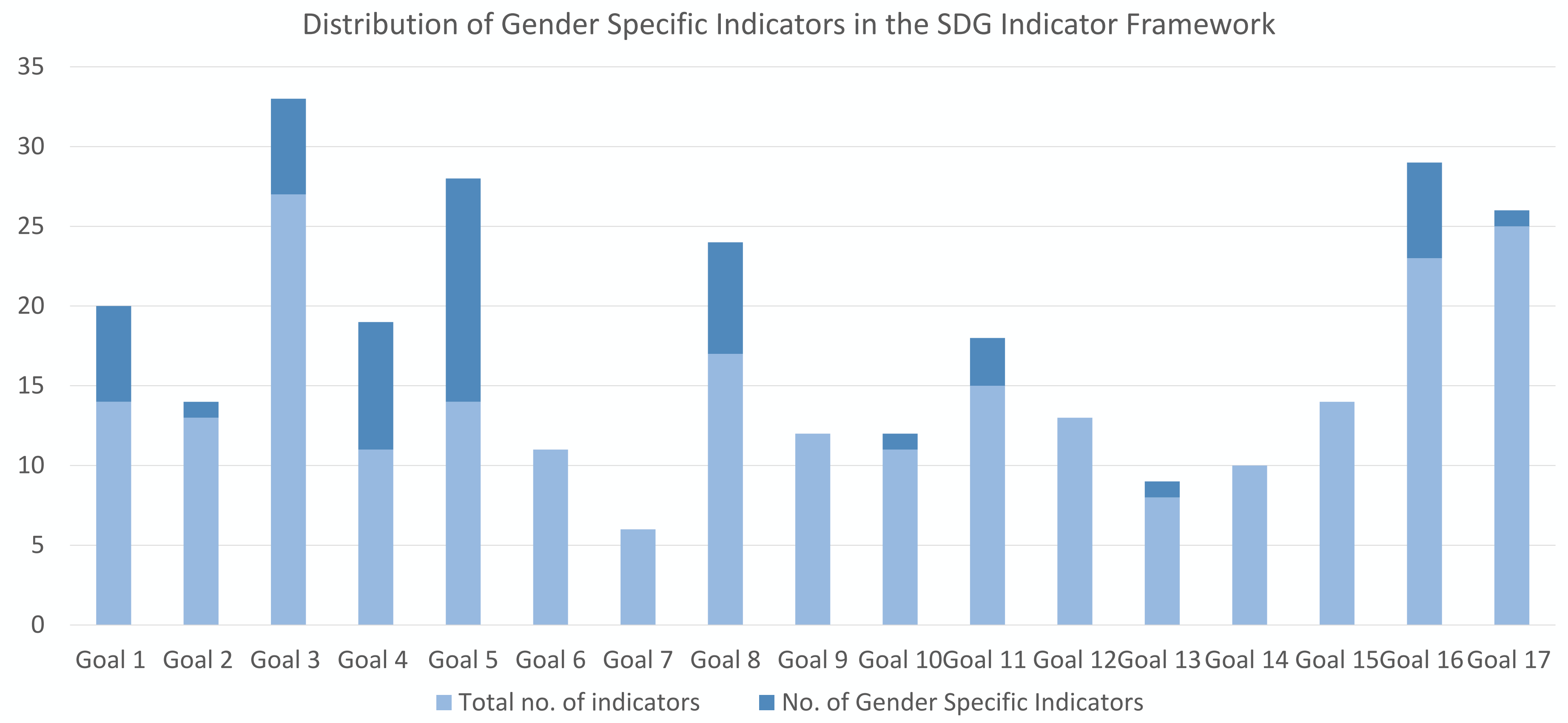
# GENDER ACROSS THE SDG INDICATOR FRAMEWORK



- Gender indicators are present across many SDG goals.
- Well beyond goal 5.
- Without gender equality the SDGs cannot be achieved
- Without gender statistics, inclusive progress towards the SDGs cannot be measured

Image source: Turning promises into action. UN Women 2018

# GENDER ACROSS THE SDG INDICATOR FRAMEWORK



# TYPES OF GENDER INDICATORS FOUND ACROSS THE SDG MONITORING FRAMEWORK

1) Targeted gender-specific indicators

PROPORTION OF WOMEN WHO HAVE UNDERGONE FGM BY AGE COHORT (20-24 AND 45-49), 2004-2016

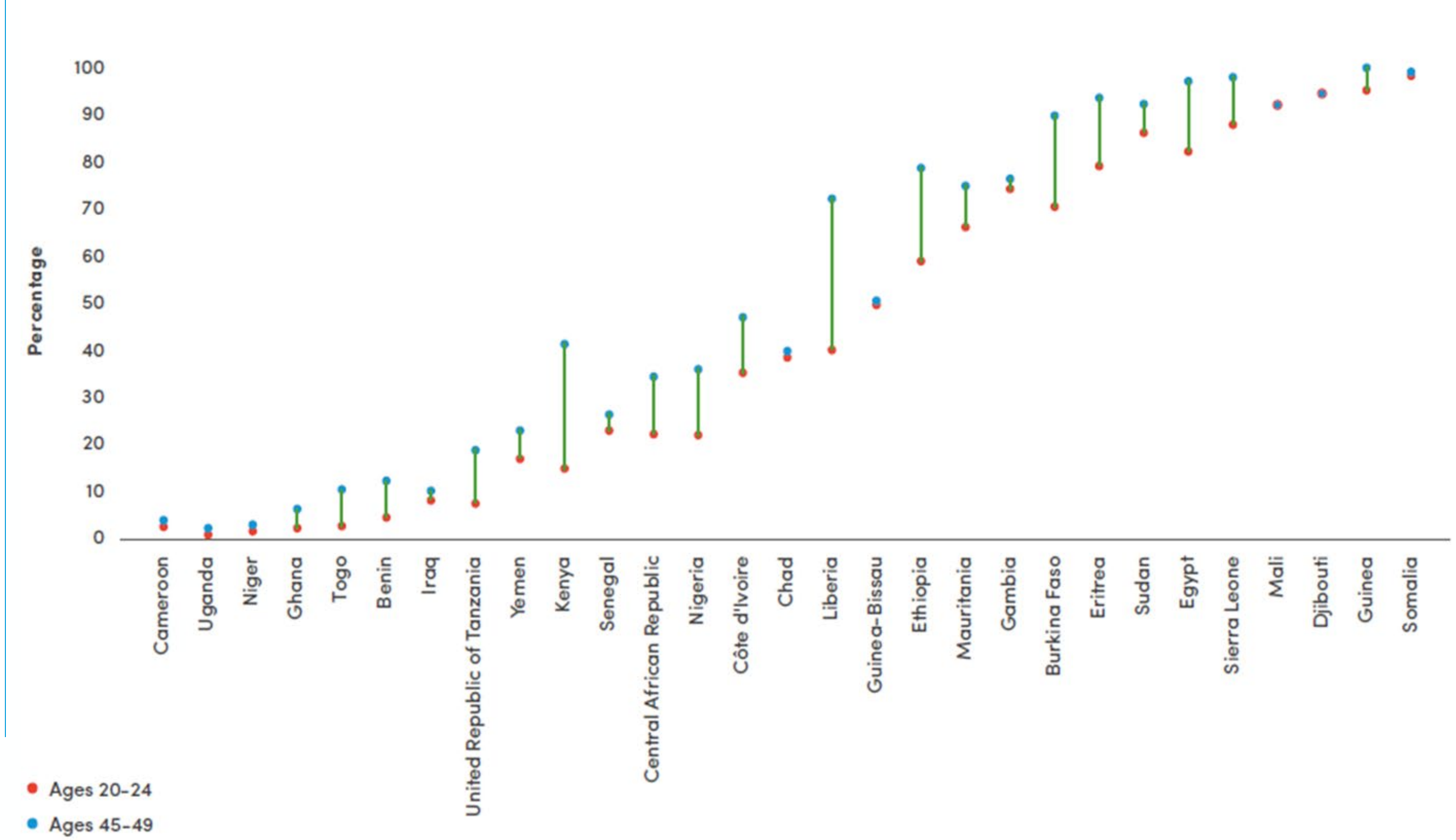


Image source: Turning promises into action. UN Women 2018

# TYPES OF GENDER INDICATORS FOUND ACROSS THE SDG MONITORING FRAMEWORK

2) Sex disaggregation is explicitly mentioned

PERCENTAGE OF PEOPLE LIVING BELOW 50 PER CENT OF MEDIAN INCOME, BY SEX, 2007-2013

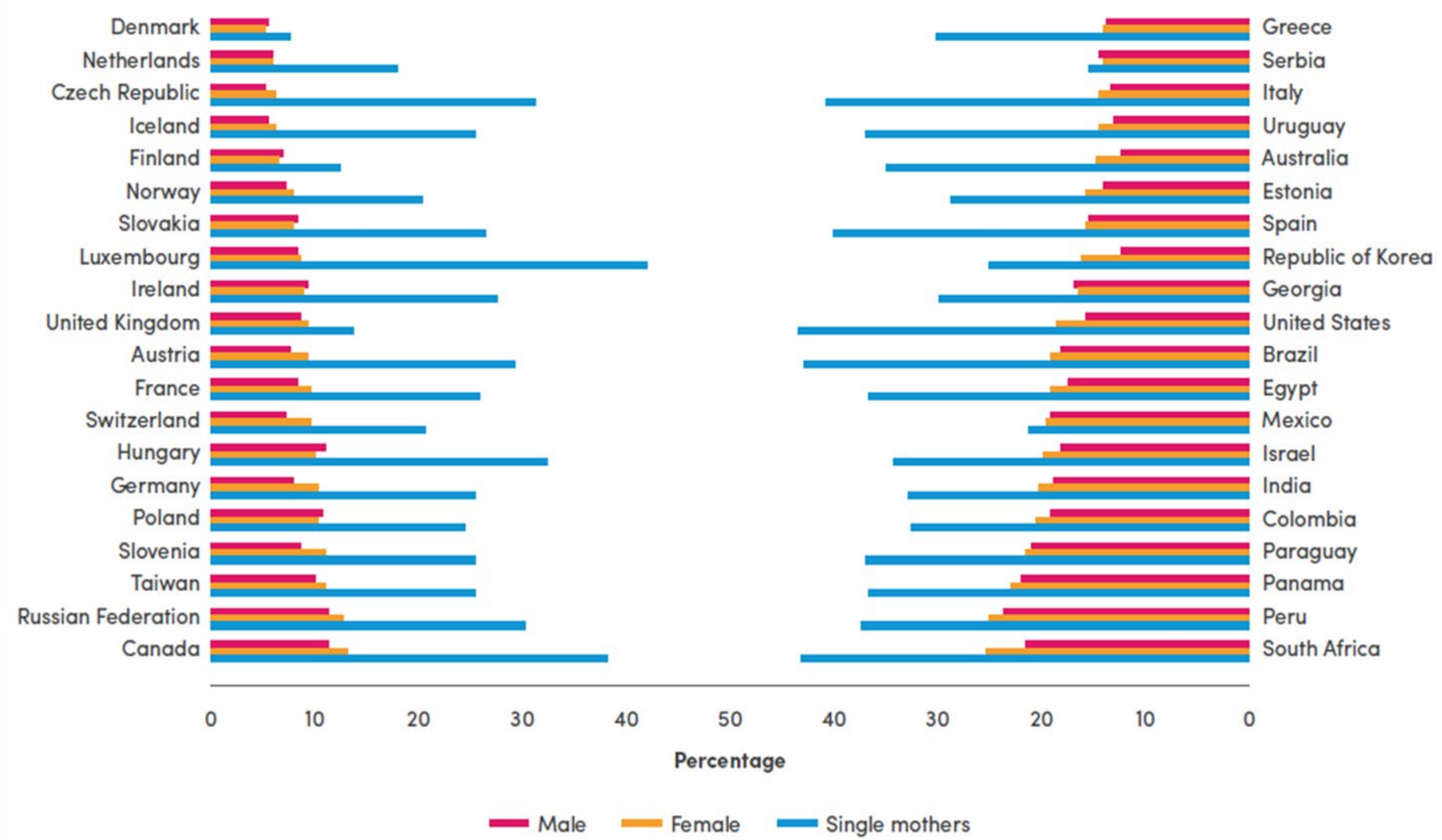


Image source: Turning promises into action. UN Women 2018

# TYPES OF GENDER INDICATORS FOUND ACROSS THE SDG MONITORING FRAMEWORK

3) Additional indicators that capture a gender angle (gender-relevant)

**PROPORTION OF HOUSEHOLDS WITH PRIMARY RELIANCE ON SOLID FUELS, BY REGION, LOCATION AND WEALTH QUINTILE, 2013-2016**

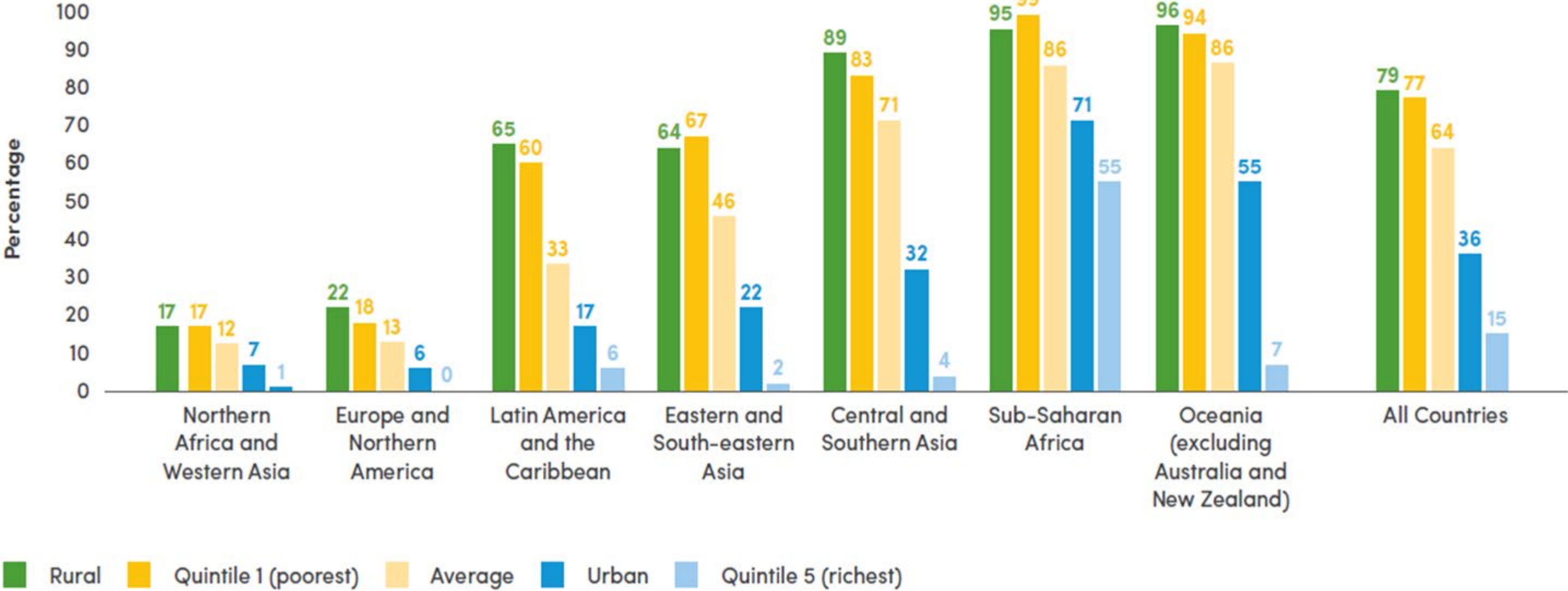


Image source: Turning promises into action. UN Women 2018

# TYPES OF GENDER INDICATORS FOUND ACROSS THE SDG MONITORING FRAMEWORK

Other indicators across the framework might not be gender specific but are still gender-relevant, as additional disaggregation could potentially be performed

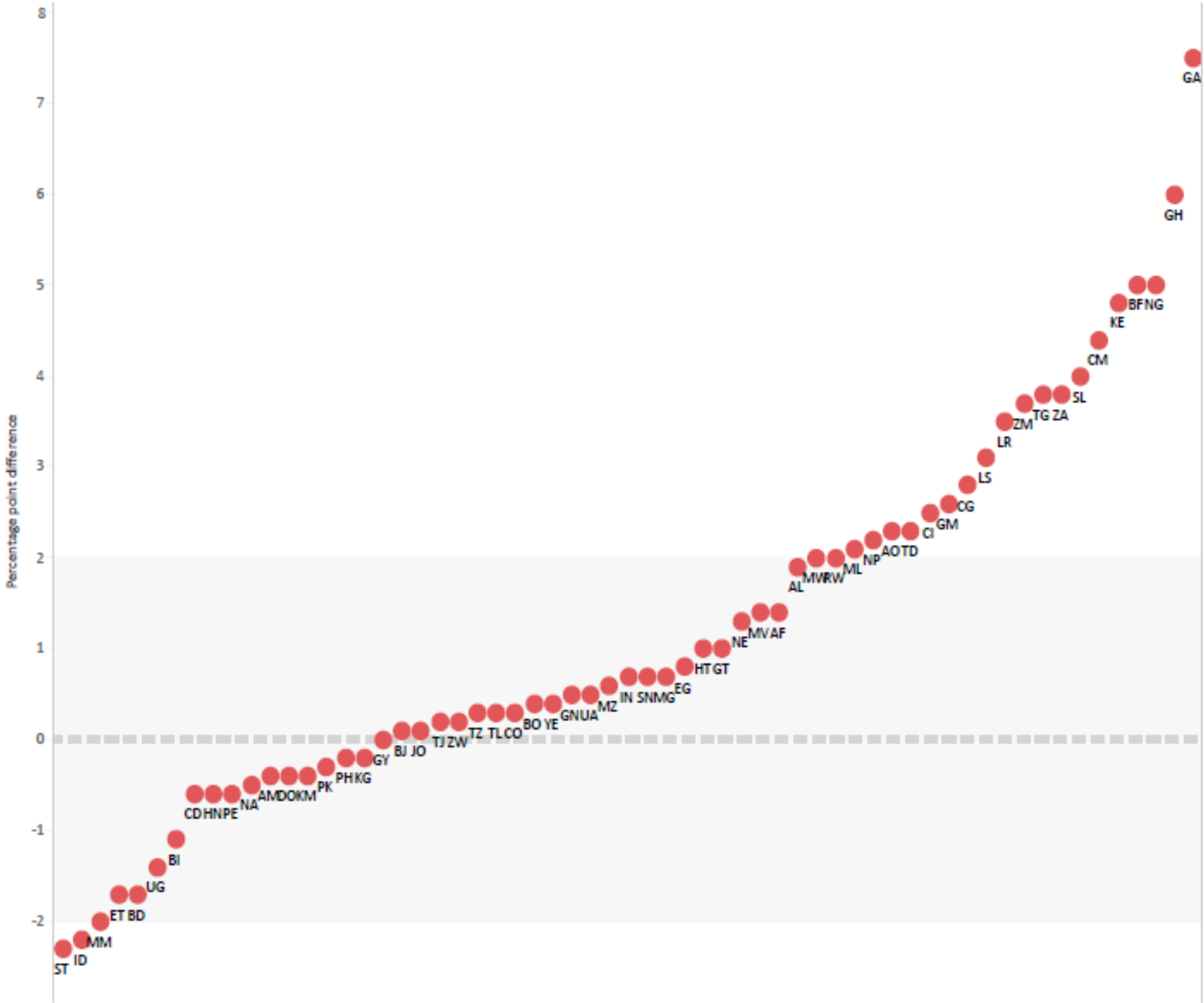
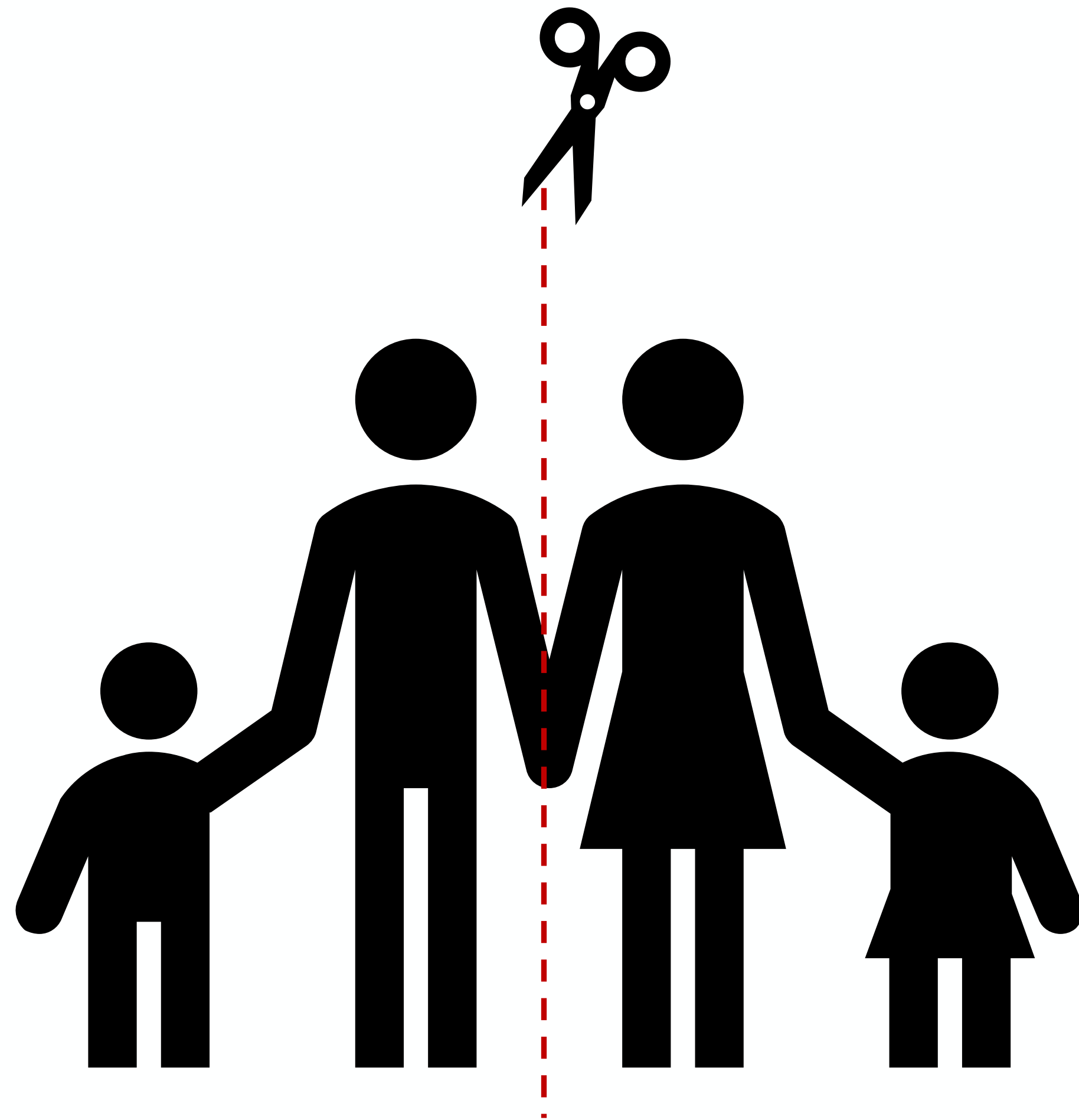


Image source: Azcona, Duerto, Bhat, 2020. Harsh Realities: Marginalized women in cities of the developing world.

## WHY ARE GENDER STATISTICS IMPORTANT?



WITHOUT GENDER  
DATA WE ARE  
GETTING AN  
INACCURATE  
PICTURE.

# WHY ARE GENDER STATISTICS IMPORTANT?

Policy making

Accountability

Advocacy

Analysis/Academi  
c research

ACHIEVE  
THE SDGs  
FOR ALL

# AREAS OF GENDER GAP IN THE CARIBBEAN

- Time use
- Gender-Based Violence
- Access to credit
- Poverty



UNITED NATIONS

ECLAC

# ENHANCING AVAILABILITY AND USE OF GENDER DATA

## CHALLENGES TO GENDER DATA PRODUCTION/USE

### Weak policy space

- Lack of political will
- Inadequate resources

### Technical challenges

- Limited coordination among NSS actors
- Limited technical capacity in methodologically challenging areas

### Lack of access to data

- Limited awareness
- Insufficient dissemination/communication
- User-producer disconnect

## SOLUTIONS (INCLUDING WOMEN COUNT)

### Enabling environment

- Strategies/Laws prioritize gender data
- Gender-sensitive SDG localization
- Intergovernmental work for methodological developments and S-S cooperation

### Gender data production

- Build capacity in technically challenging areas such as Time Use, Environment, Violence surveys
- Reprocess existing data

### Data dissemination & use

- Communicating data efficiently
- Better exchanges (SDMX)
- User-producer dialogues

Source: Making Every Woman and Girl Count Inception document

