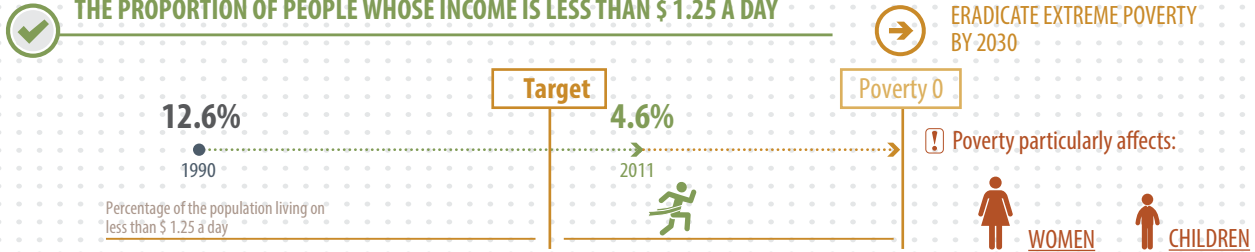
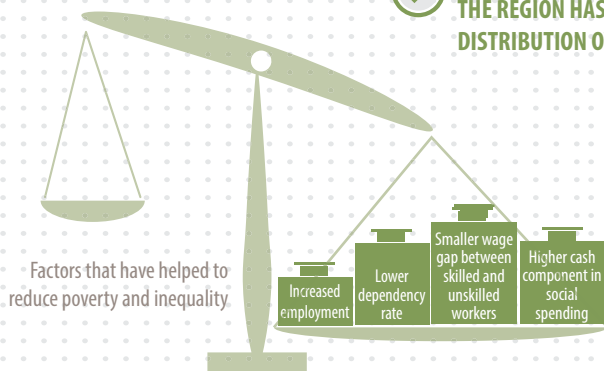


Target 1A: Halve, between 1990 and 2015, the proportion of people whose income is less than \$ 1.25 a day

LATIN AMERICA AND THE CARIBBEAN HAS REACHED THE TARGET OF HALVING THE PROPORTION OF PEOPLE WHOSE INCOME IS LESS THAN \$ 1.25 A DAY



THE REGION HAS IMPROVED INCOME DISTRIBUTION OVER THE PAST DECADE



⚠️ DESPITE THIS PROGRESS
LATIN AMERICA AND THE CARIBBEAN IS STILL THE
MOST UNEQUAL REGION ON THE PLANET

1B: Achieve full and productive employment and decent work for all, including women and young people

THE REGION NOW HAS THE BEST INDICATORS OF EMPLOYMENT, UNEMPLOYMENT AND PARTICIPATION OF THE PAST 20 YEARS

46% OF THE URBAN EMPLOYED WORK IN THE INFORMAL SECTOR



⚠️ IN 2013, **10% OF EMPLOYED WORKERS** LIVED IN EXTREMELY POOR HOUSEHOLDS

➔ INCREASE INCLUSION FROM WITHIN THE LABOUR SYSTEM

Target 1C: Halve, between 1990 and 2015, the proportion of people who suffer from hunger

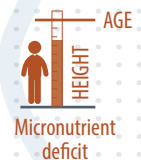
THE REGION HAS MET THE TARGET OF REDUCING BY 50% THE PROPORTION OF PEOPLE WHO SUFFER FROM HUNGER

⚠️ Very uneven situation between countries

THE REGION HAS ALSO MADE SIGNIFICANT PROGRESS IN REDUCING CHILD UNDERNOURISHMENT



⚠️ **7.5 MILLION** CHILDREN UNDER AGE 5 SUFFER FROM CHRONIC UNDERNUTRITION



➔ ERADICATE CHILD UNDERNOURISHMENT AND TACKLE HIGH PREVALENCE OF OBESITY IN CHILDREN AND ADULTS